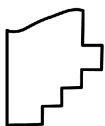
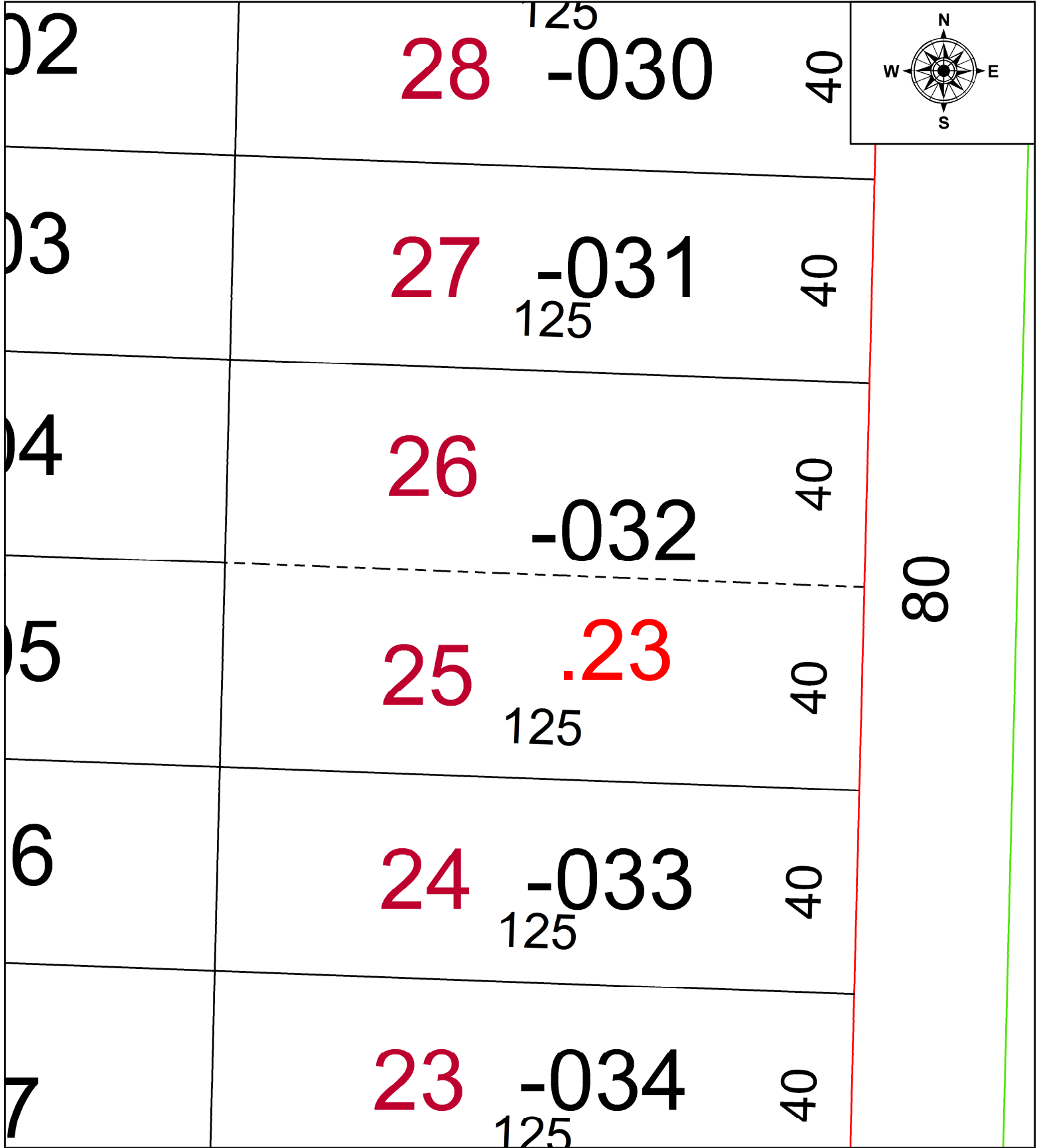


PARENT PARCEL: 03-00-103-113-032

CHILD PARCEL: FRONT & DEPTH TO AC CORR PER SURV BY SEAN A. BOLAND

24-05268-C

STARTING POINT: S LINE OF E 36TH ST AND W LINE OF CLIFTON AVE



SPLITS/DEEDS PROCESSED
LORAIN COUNTY TAX MAP DEPARTMENT
226 MIDDLE AVE. ELYRIA, OH

SURVEYED BY: SEAN A. BOLAND SURV # 51148

CLOSURE: 1: INF

MAP PAGE(S): 03-00-103

APPROVED BY: AC DATE: April 02, 2024

SCALE: 1 in = 25 ft PRIOR INSTRUMENT: 2017- 0624350