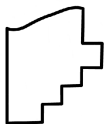
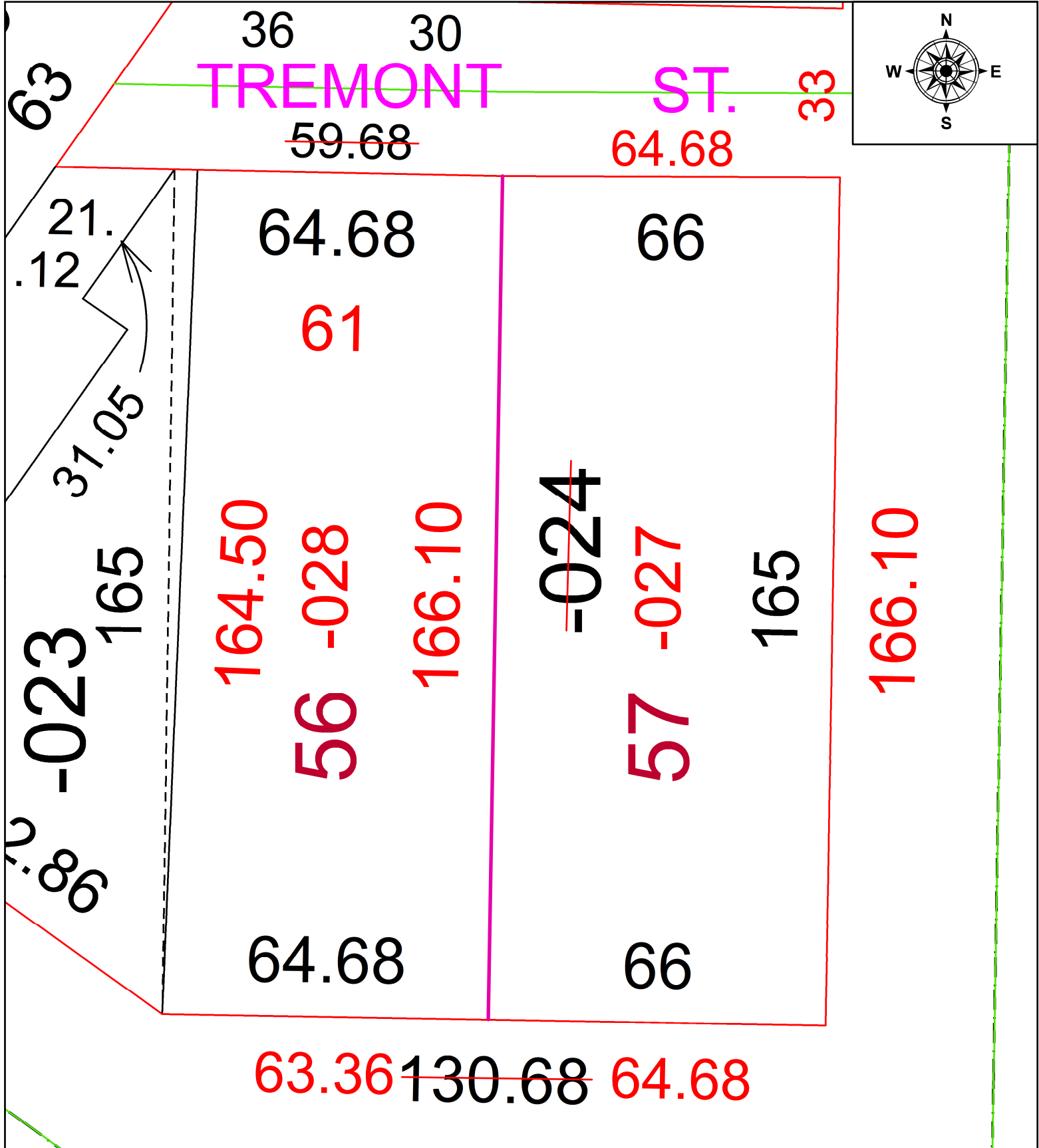


PARENT PARCEL: 06-26-071-000-024

CHILD PARCEL: 06-26-071-000-027 & -028

STARTING POINT: UNCOMBINATION PER PRIOR DEED INSTRUMENT NO. 2017-0619356

24-05266-C



**SPLITS/DEEDS PROCESSED**  
 LORAIN COUNTY TAX MAP DEPARTMENT  
 226 MIDDLE AVE. ELYRIA, OH

SURVEYED BY: J.W. WARDEN SURV # N/A  
 CLOSURE: 1: 1374699  
 MAP PAGE(S): 06-26  
 APPROVED BY: AC DATE: April 01, 2024  
 SCALE: 1 in = 25 ft PRIOR INSTRUMENT: 2017- 0619356