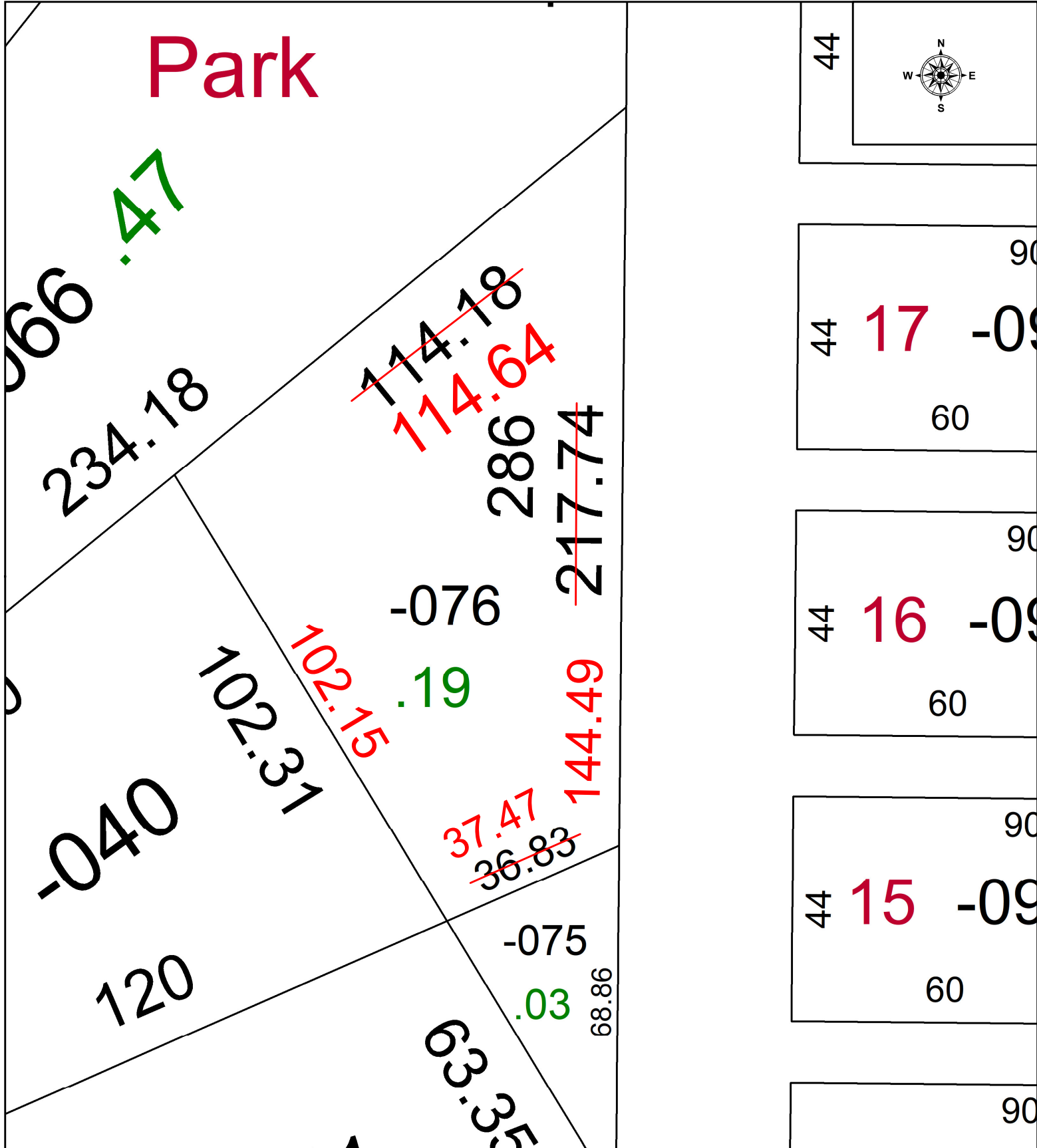
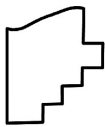


PARENT PARCEL: 06-24-017-102-076
CHILD PARCEL: MAP CORRECTION ONLY
STARTING POINT: NORTHEASTERLY CORNER OF S/L 27 IN WASHINGTON VILLAGE SUB.

24-05265-C



 **SPLITS/DEEDS PROCESSED**
LORAIN COUNTY TAX MAP DEPARTMENT
226 MIDDLE AVE. ELYRIA, OH

SURVEYED BY: THOMAS SIMON SURVEY # 51146
CLOSURE: 1: 77244
MAP PAGE(S): 06-24-017
APPROVED BY: WRZ DATE: 4/1/2024
SCALE: 1" = 25 PRIOR INSTRUMENT: #2023-0918703