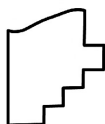
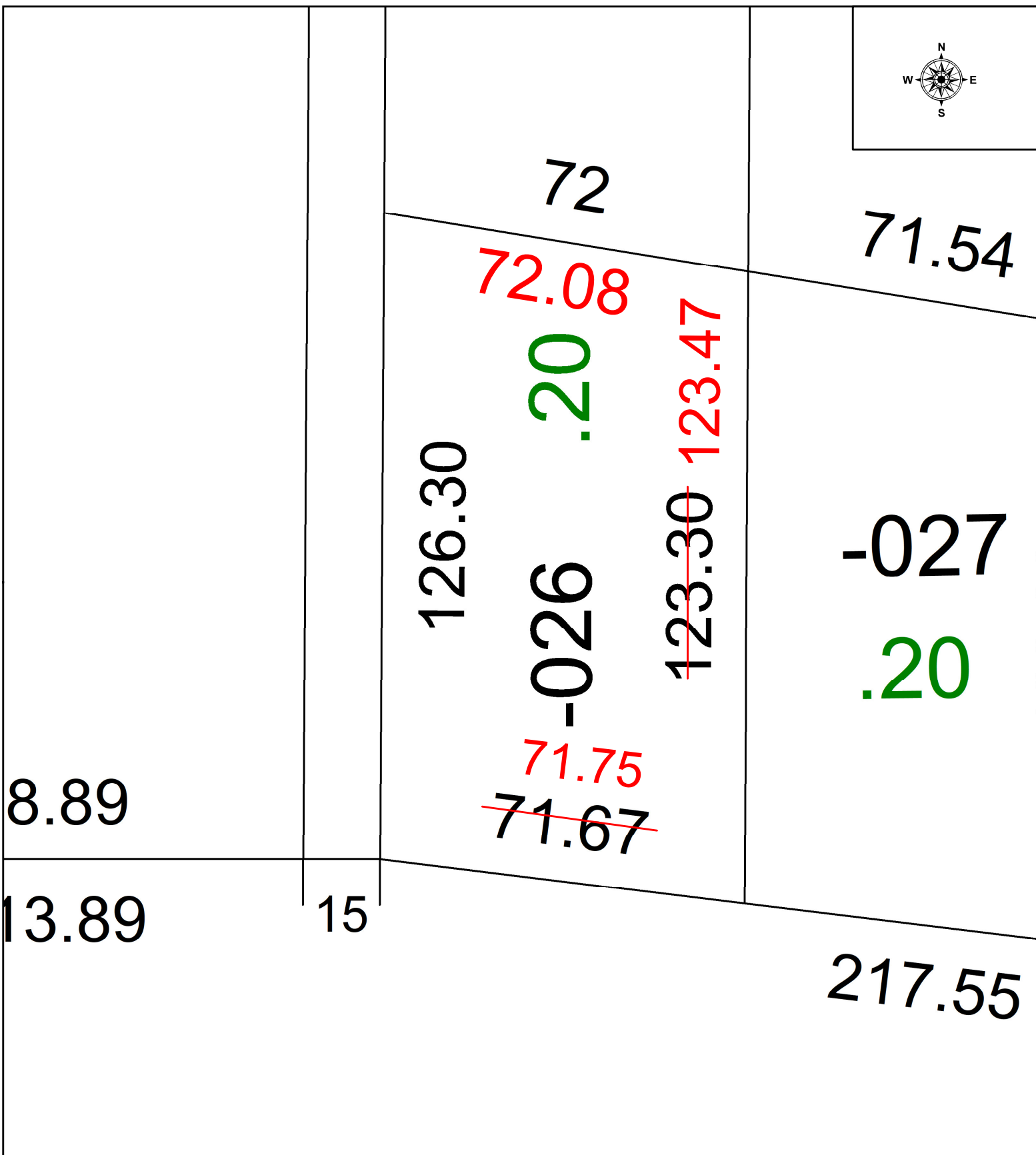
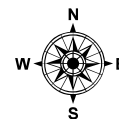


PARENT PARCEL: 04-00-014-105-026
CHILD PARCEL: MAP CORRECTION ONLY
STARTING POINT: MAG NAIL @ INTERSECTION OF C/L OF KINZEL RD & SECTION 14

24-05264-C



SPLITS/DEEDS PROCESSED
LORAIN COUNTY TAX MAP DEPARTMENT
226 MIDDLE AVE. ELYRIA, OH

SURVEYED BY: LOUIS GIFFELS SURVEY # 51144
CLOSURE: 1: 101499
MAP PAGE(S): 04-00-014
APPROVED BY: WRZ DATE: 3/29/2024
SCALE: 1" = 25 PRIOR INSTRUMENT: #2017-0652503