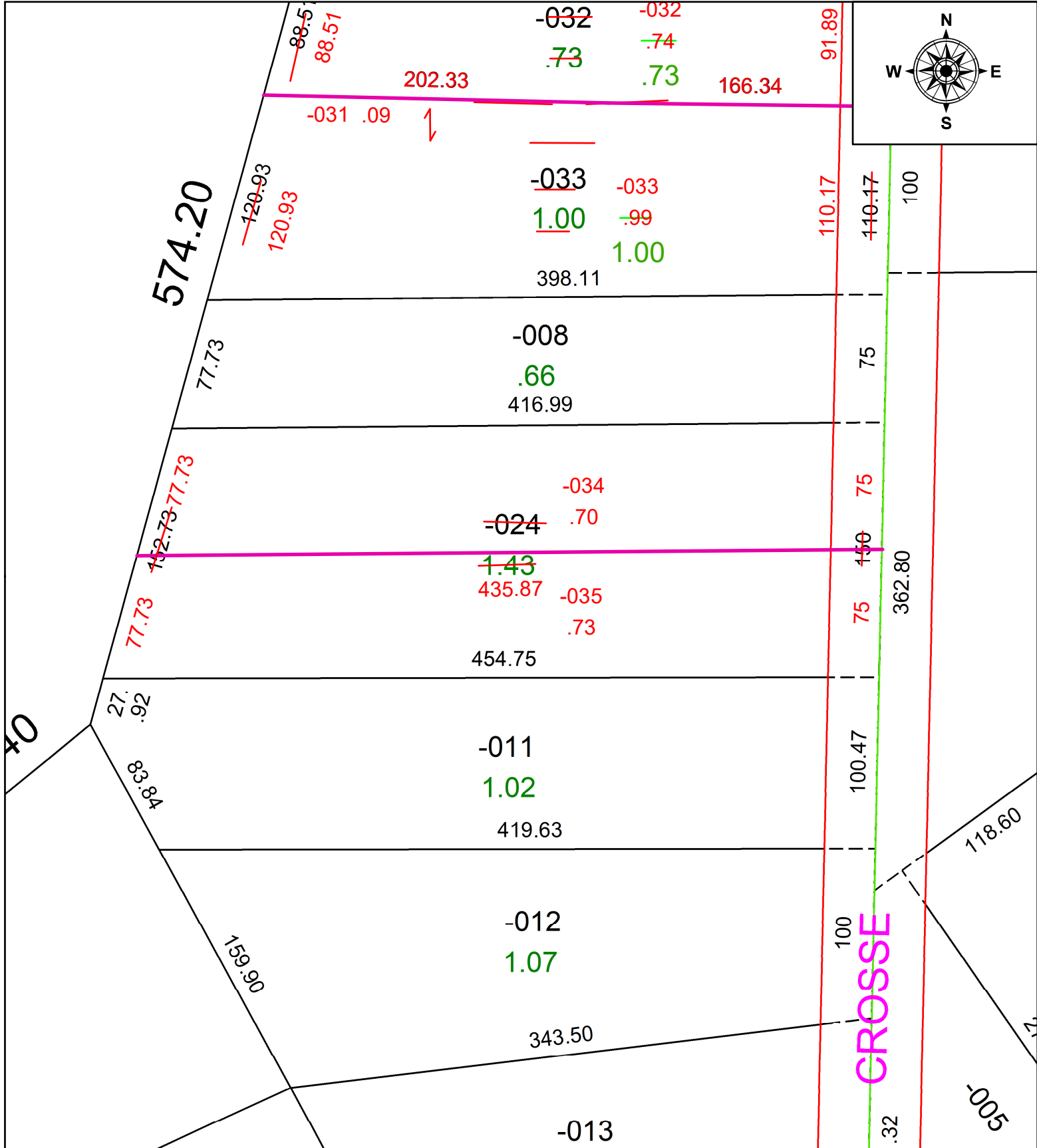


PARENT PARCEL: 05-00-097-101-024

CHILD PARCEL: 05-00-097-101-034 & 05-00-097-101-035

STARTING POINT: UNCOMBINATION PER PRIOR DEED INSTRUMENT NO. 2018- 0684860

24-05259-U



SPLITS/DEEDS PROCESSED
 LORAIN COUNTY TAX MAP DEPARTMENT
 226 MIDDLE AVE. ELYRIA, OH

SURVEYED BY: N/A SURV # N/A
 CLOSURE: 1: 113731
 MAP PAGE(S): 15-00-057-A
 APPROVED BY: AC DATE: March 13, 2024
 SCALE: 1 in = 75 ft PRIOR INSTRUMENT: 2018- 0684860