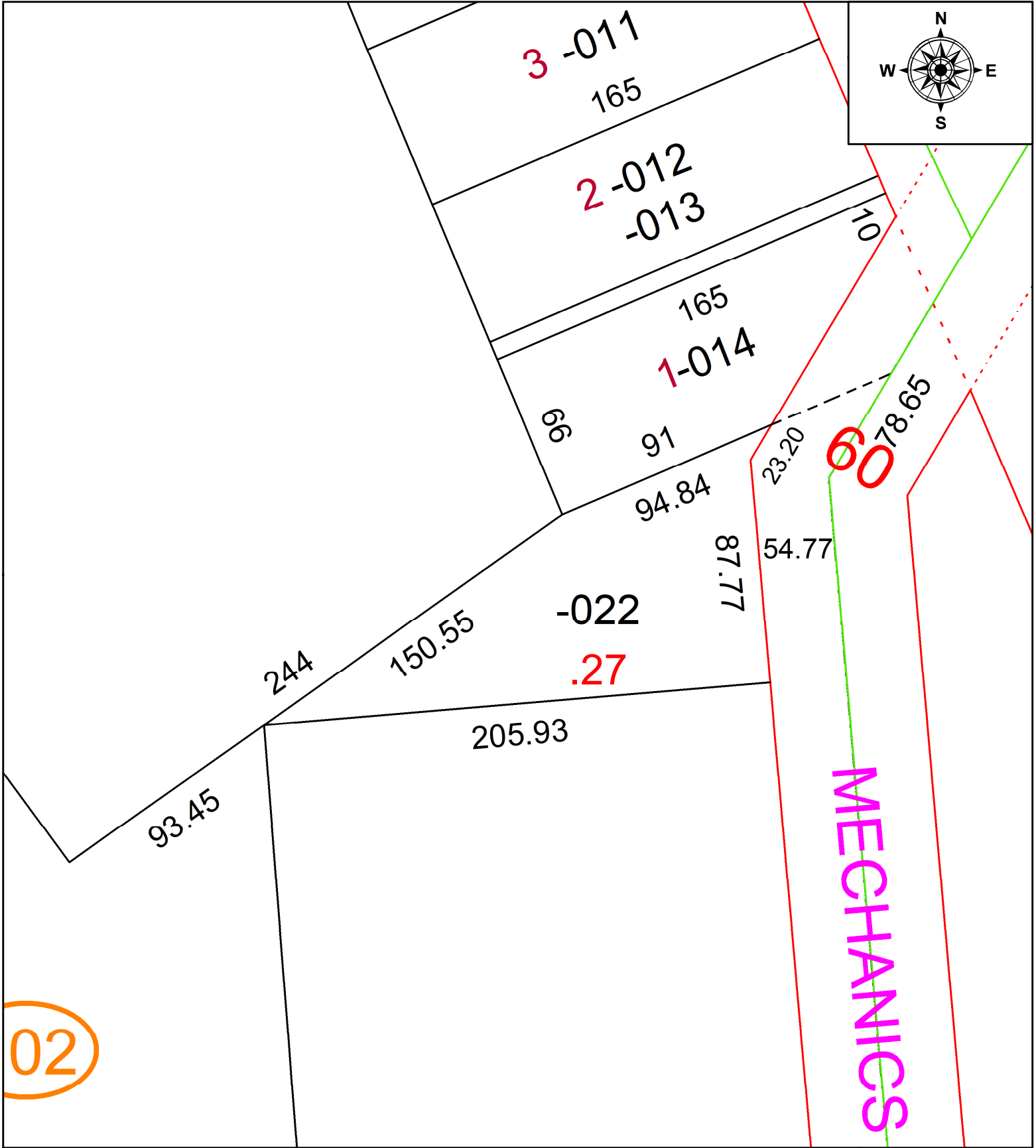


PARENT PARCEL: 16-00-002-102-022

CHILD PARCEL: **AC CORR PER SURV BY PHIL A. ROSEBECK**

STARTING POINT:

24-05255-C



02



SPLITS/DEEDS PROCESSED
 LORAIN COUNTY TAX MAP DEPARTMENT
 226 MIDDLE AVE. ELYRIA, OH

SURVEYED BY: PHIL A. ROSEBECK	SURV # N/A
CLOSURE: 1: 100789	
MAP PAGE(S): 16-00-002	
APPROVED BY: AC	DATE: March 01, 2024
SCALE: 1 in = 50 ft	PRIOR INSTRUMENT: 2010- 0334673