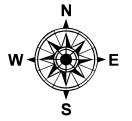
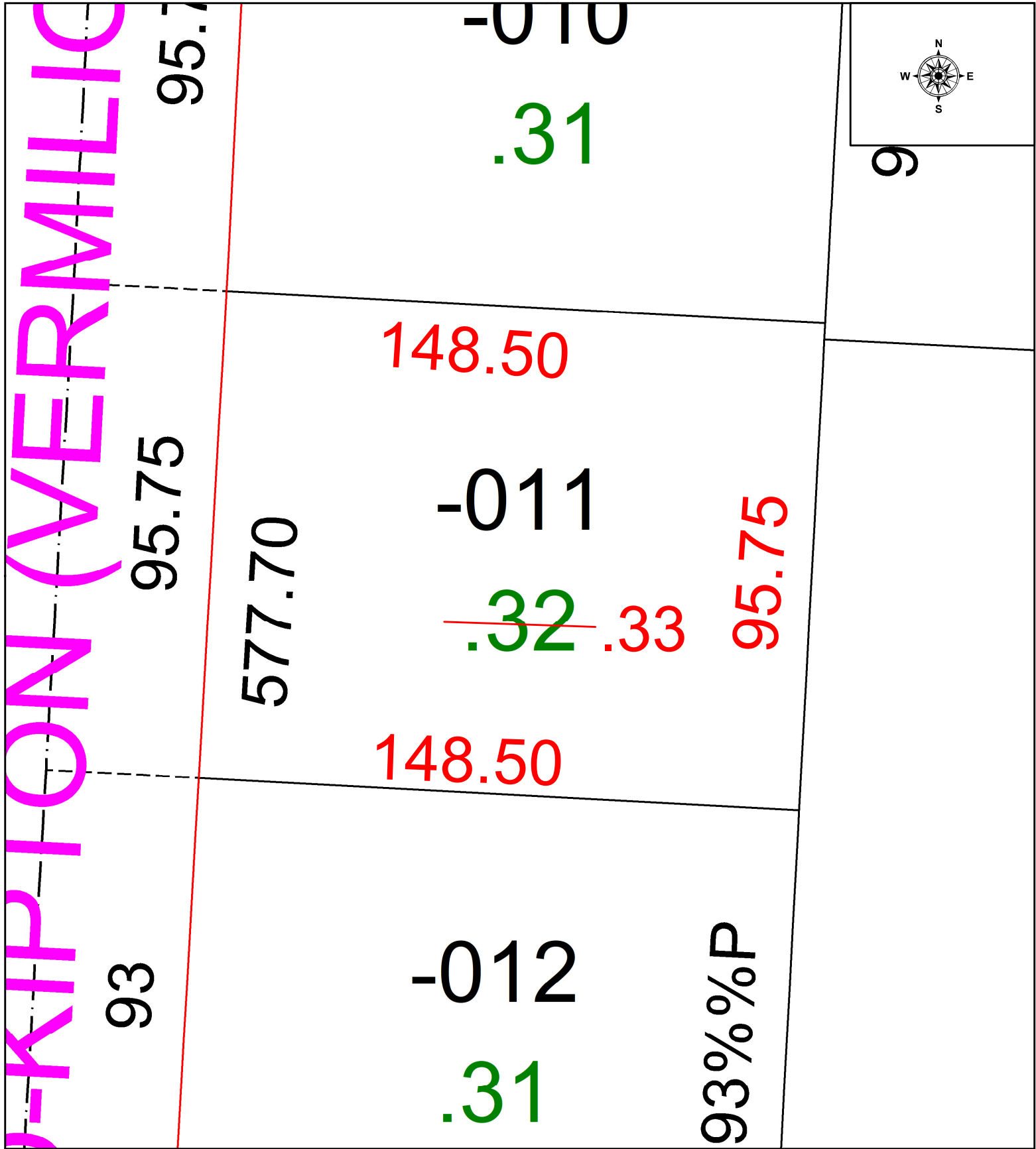


PARENT PARCEL: 17-07-008-000-011

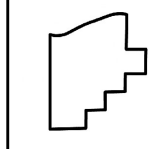
CHILD PARCEL: AC CORR PER SURVEYOR WILFREDO BARBOSA

STARTING POINT: INTERSECTION OF C/LS OF SR 511 & SR 18

24-05252-C



9



**SPLITS/DEEDS PROCESSED**  
 LORAIN COUNTY TAX MAP DEPARTMENT  
 226 MIDDLE AVE. ELYRIA, OH

SURVEYED BY: WILFREDO BARBOSA SURVEY # 51125  
 CLOSURE: 1: INF  
 MAP PAGE(S): 17-07-008  
 APPROVED BY: WRZ DATE: 2/22/2024  
 SCALE: 1" = 25' PRIOR INSTRUMENT: #2011-0394310