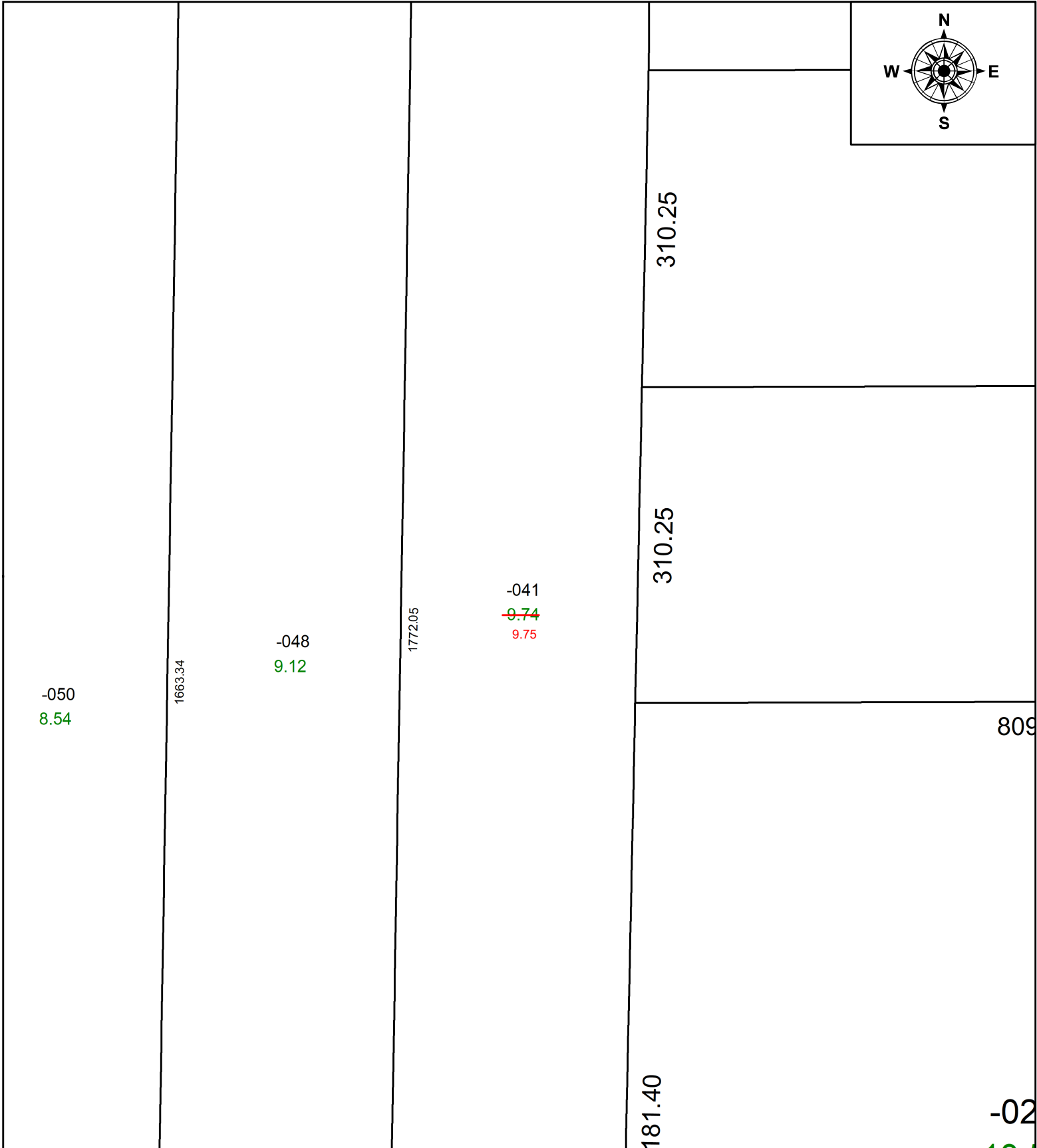
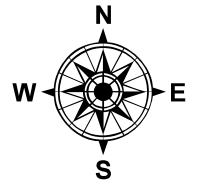


PARENT PARCEL: 09-00-081-000-041

CHILD PARCEL: **AC CORR PER SURV BY THOMAS M. SNEZEK**

STARTING POINT:

24-05250-C



-050
8.54

1663.34

-048
9.12

1772.05

-041
~~9.74~~
9.75

310.25

310.25

809

181.40

-02

SPLITS/DEEDS PROCESSED

LORAIN COUNTY TAX MAP DEPARTMENT
226 MIDDLE AVE. ELYRIA, OH

SURVEYED BY: THOMAS M. SNEZEK SURV # N/A

CLOSURE: N/A

MAP PAGE(S): 09-00-081

APPROVED BY: AC DATE: February 21, 2024

SCALE: 1 in = 125 ft PRIOR INSTRUMENT: 1998-0526407