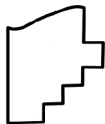
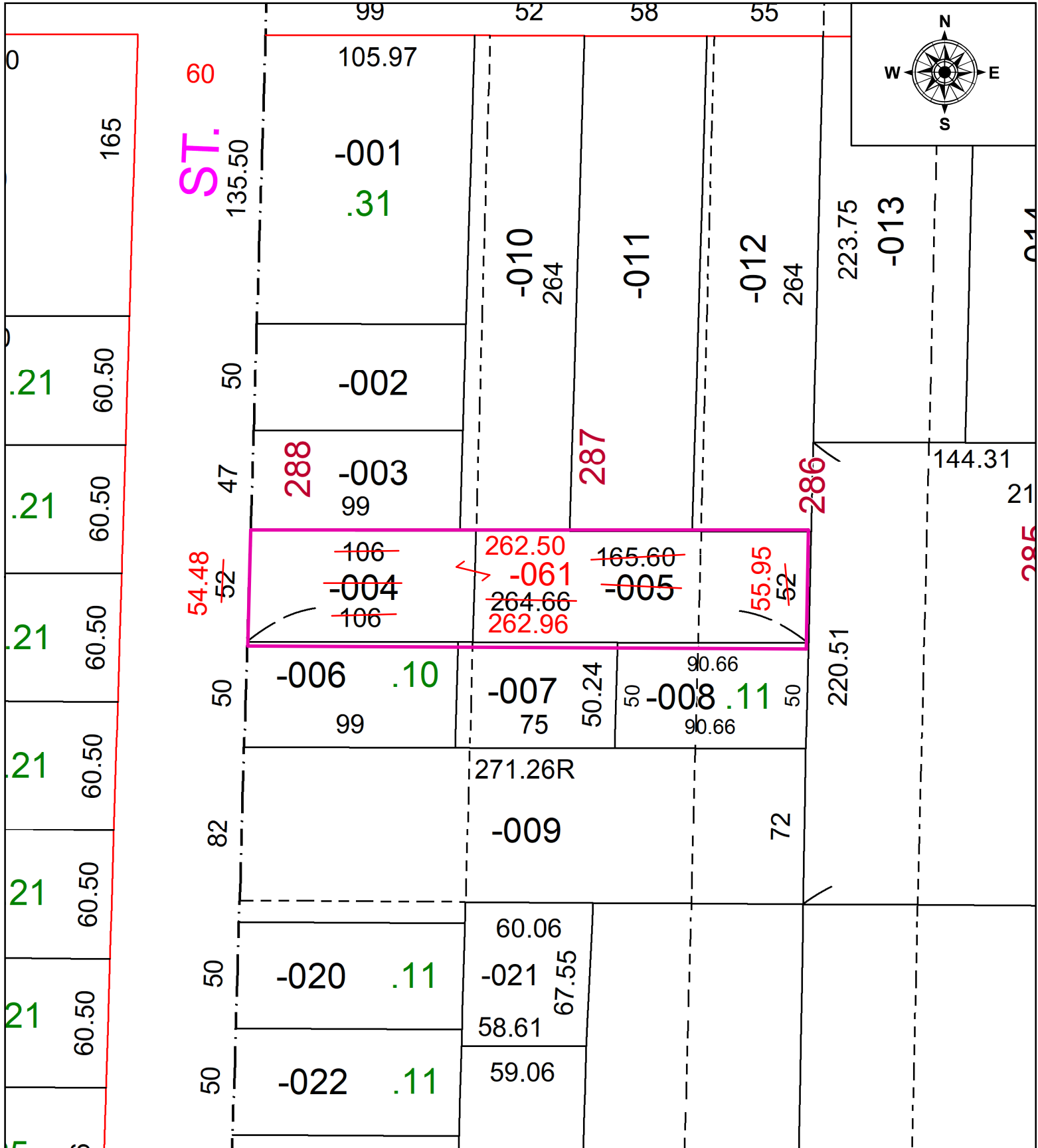


PARENT PARCEL: 09-00-085-101-004 & -005

CHILD PARCEL: 09-00-085-101-061 COMBINATION

STARTING POINT: INTERSECTION EAST R.O.W. OF NORTH PROSPECT ST. & SOUTH R.O.W. OF WEST LORAIN STREET (S.R. 10)

24-05248-C



SPLITS/DEEDS PROCESSED
 LORAIN COUNTY TAX MAP DEPARTMENT
 226 MIDDLE AVE. ELYRIA, OH

SURVEYED BY: JAMES YURKSCHATT
 CLOSURE: 1:201168
 MAP PAGE(S): 9-00-085
 APPROVED BY: TJS DATE: 2/16/2024
 SCALE: 1" = 60' PRIOR INSTRUMENT: 2022-0902476