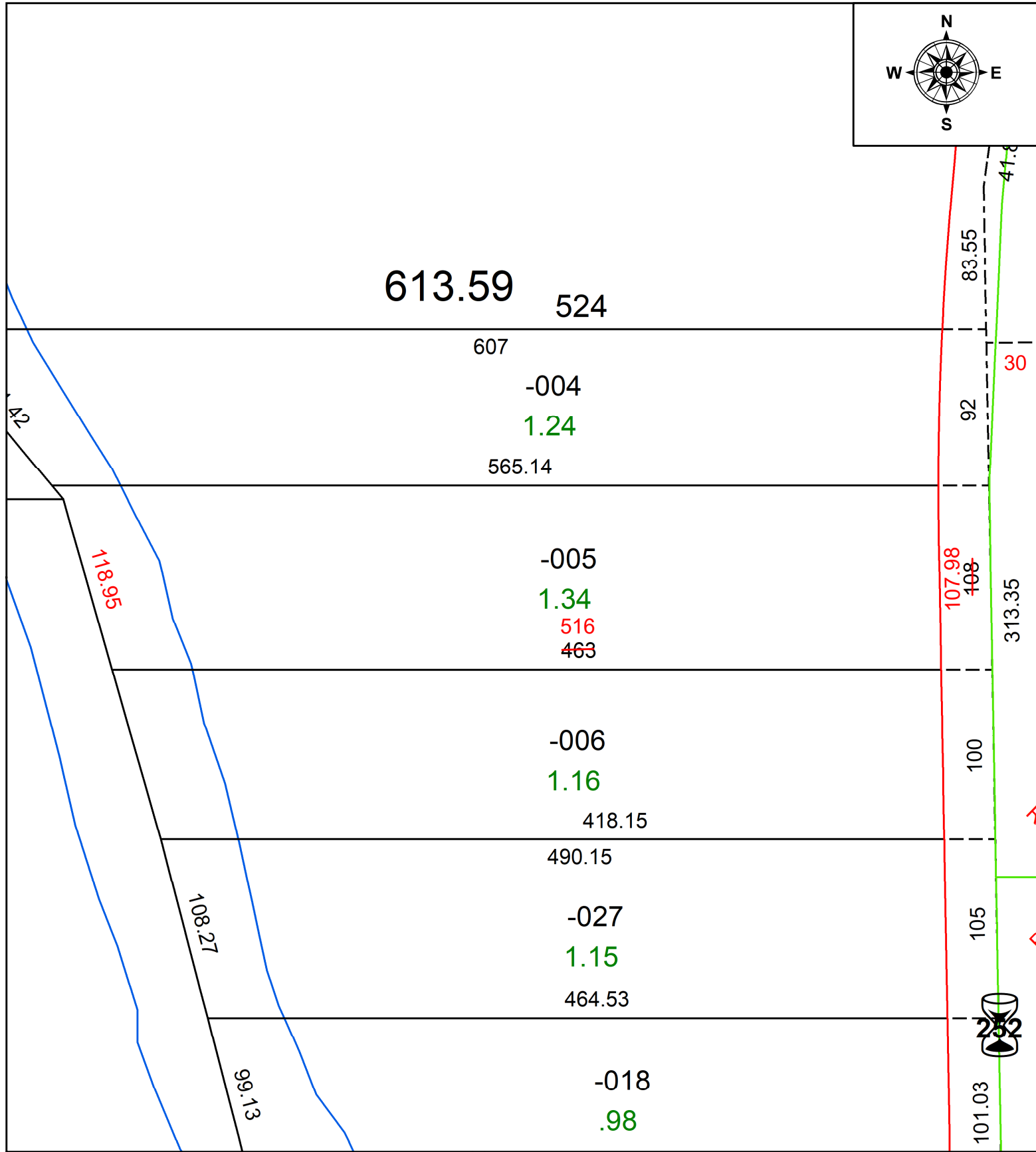
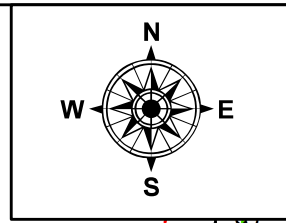


PARENT PARCEL: 12-00-037-000-005

CHILD PARCEL: **MAP CORRECTION ONLY**

STARTING POINT: C/L OF E RIVER RD AND EAGLE POINTE CT

24-05237-C



SPLITS/DEEDS PROCESSED
 LORAIN COUNTY TAX MAP DEPARTMENT
 226 MIDDLE AVE. ELYRIA, OH

SURVEYED BY: THOMAS A. SIMON SURV # 51117
 CLOSURE: 1: 1085171
 MAP PAGE(S): 12-00-037
 APPROVED BY: AC DATE: January 30, 2024
 SCALE: 1 in = 75 ft PRIOR INSTRUMENT: 2015- 0567737