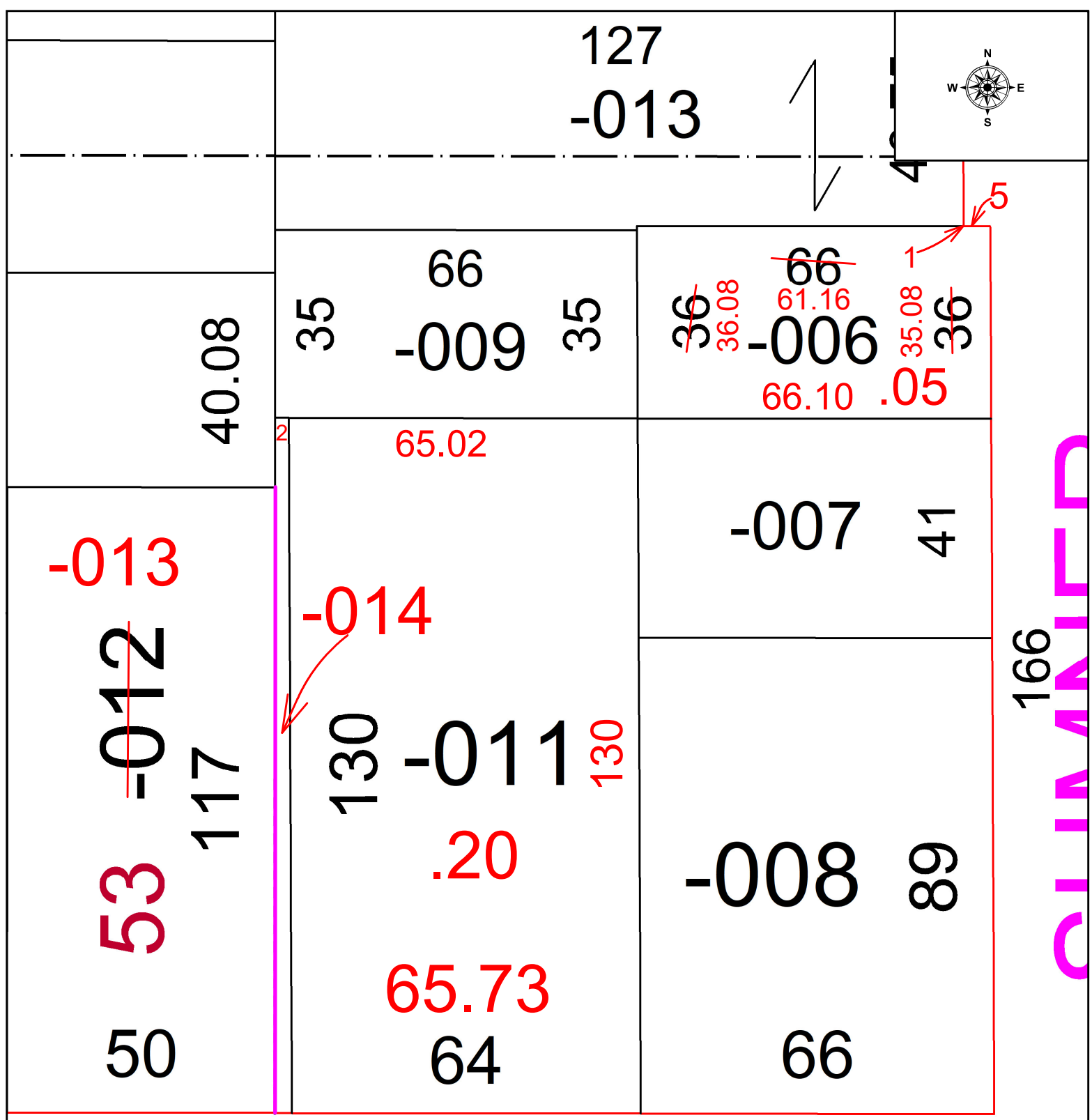


PARENT PARCEL: 06-25-077-104-006, -011, & -012 UNCOMBO PER PRIOR INSTR. #2015-0549766

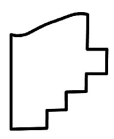
CHILD PARCEL: 06-25-077-104-013 & -014, -006, -011 FR & DPTH TO AC CORR PER SURVEYOR MATTHEW HILDEBRANDT

STARTING POINT: INTERSECTION OF NORTH LINE E. BROAD ST. & WEST LINE SUMNER ST.

24-05234-C



166
CIVIL



SPLITS/DEEDS PROCESSED
LORAIN COUNTY TAX MAP DEPARTMENT
226 MIDDLE AVE. ELYRIA, OH

SURVEYED BY: MATTHEW HILDEBRANDT	SURVEY # 51113
CLOSURE: 1: 72608	
MAP PAGE(S): 06-25-077	
APPROVED BY: WRZ	DATE: 1/26/2024
SCALE: 1" = 25'	PRIOR INSTRUMENT: #2015-0549766