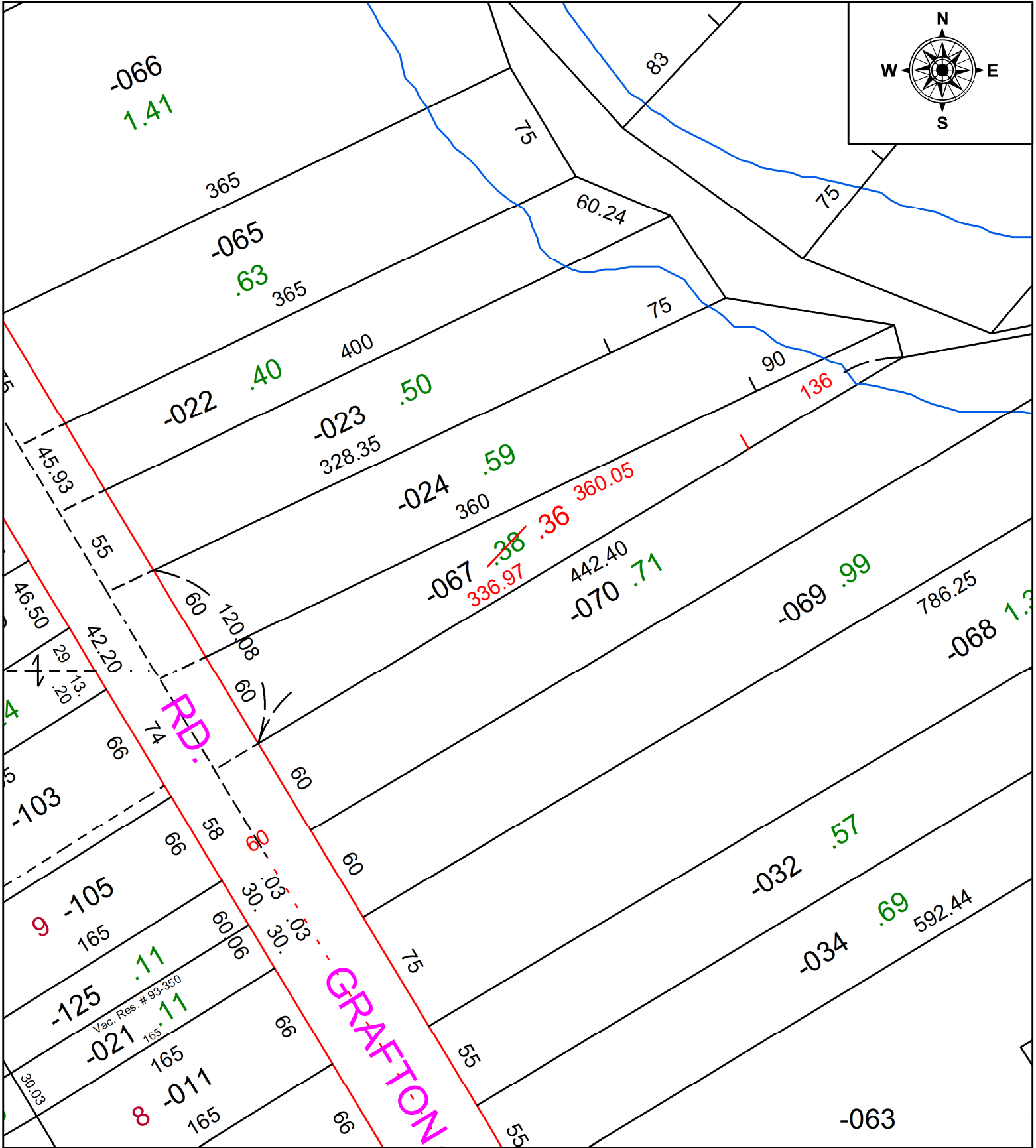


PARENT PARCEL: 10-00-004-129-067

CHILD PARCEL: AC. CORR. PER INSTRUMENT # 20080246229

STARTING POINT: N/A

24-05227-A



SPLITS/DEEDS PROCESSED
 LORAIN COUNTY TAX MAP DEPARTMENT
 226 MIDDLE AVE. ELYRIA, OH

SURVEYED BY:	N/A	SURVEY #:	N/A
CLOSURE:	N/A		
MAP PAGE(S):	10-00-004		
APPROVED BY:	DMA	DATE:	1/10/2024
SCALE:	1" = 25'	PRIOR INSTRUMENT:	2008-0246229