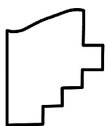
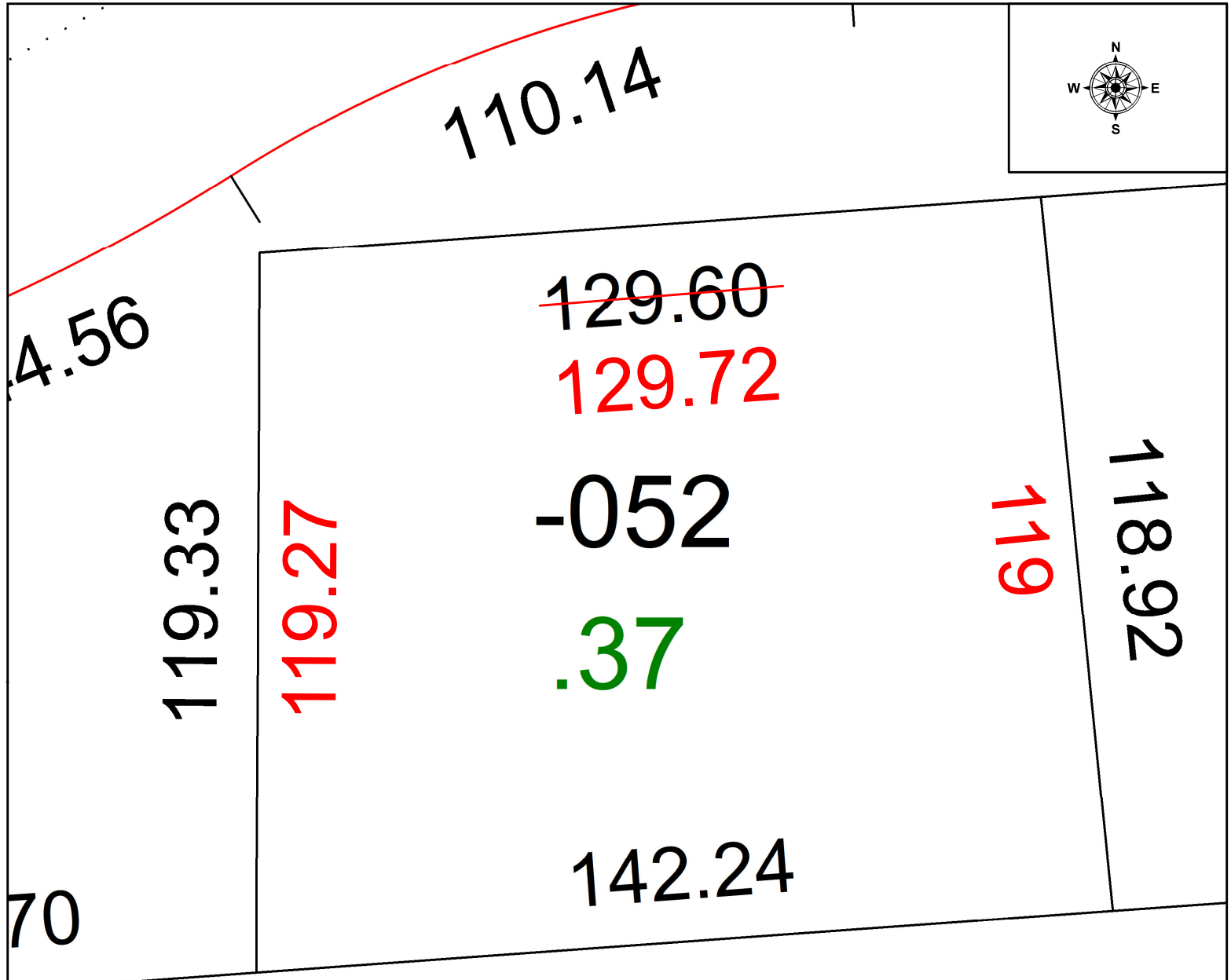
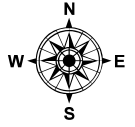


PARENT PARCEL: 03-00-112-101-052

24-05223-C

CHILD PARCEL: MAP CORRECTION ONLY

STARTING POINT: SOUTHEASTERLY CORNER OF BLK B IN O'NEIL SUBDV.



SPLITS/DEEDS PROCESSED
 LORAIN COUNTY TAX MAP DEPARTMENT
 226 MIDDLE AVE. ELYRIA, OH

SURVEYED BY: THOMAS SIMON SURVEY # 51099
 CLOSURE: 1: 78914
 MAP PAGE(S): 03-00-112
 APPROVED BY: WRZ DATE: 1/4/2024
 SCALE: 1" = 25 PRIOR INSTRUMENT: #2011-0376867