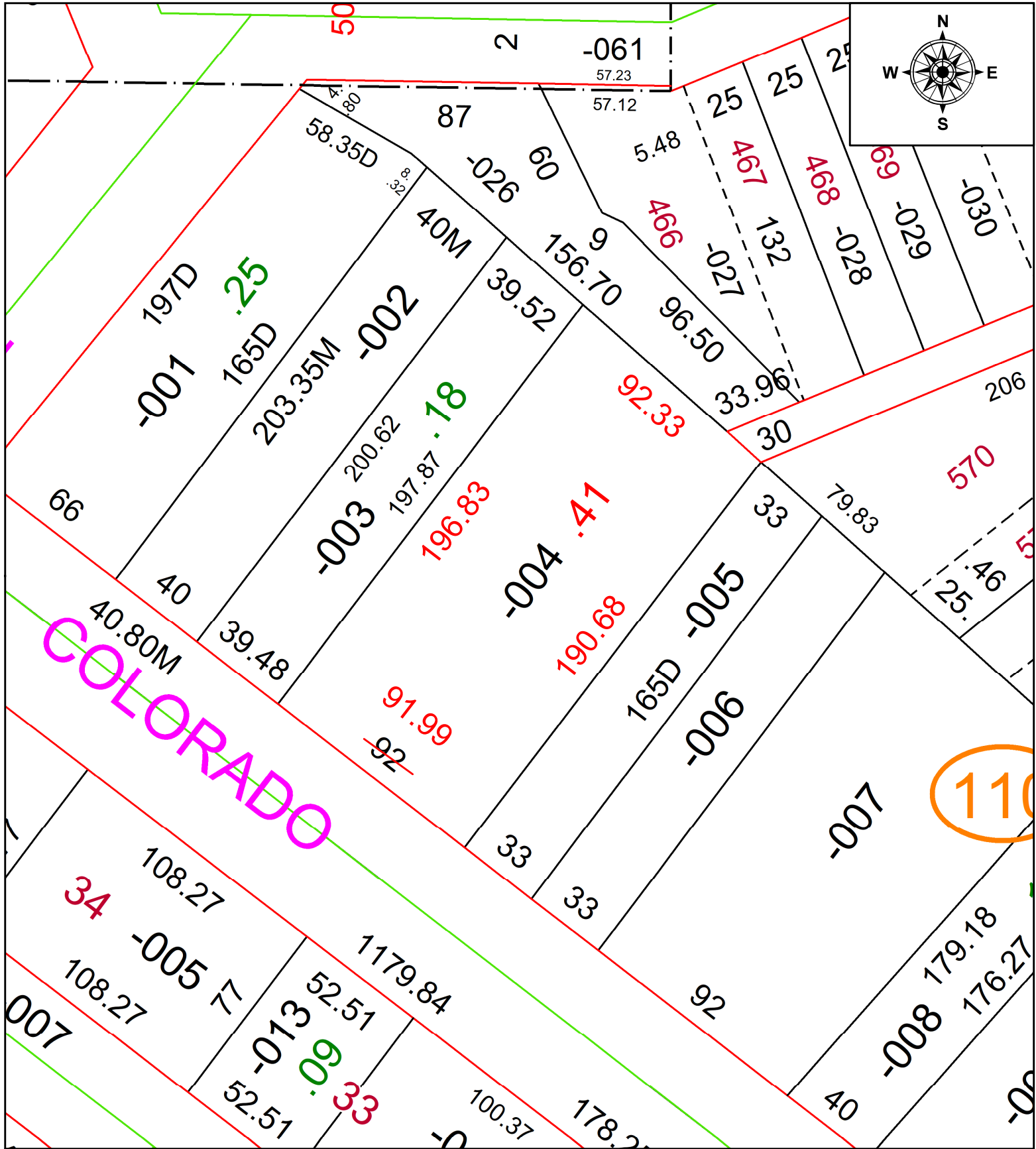


PARENT PARCEL: 02-01-003-110-004

CHILD PARCEL:

23-05190-A

STARTING POINT: FRONT & DEPTH TO AC CORR PER SURV BY ROBERT M. RUFFING



SPLITS/DEEDS PROCESSED
 LORAIN COUNTY TAX MAP DEPARTMENT
 226 MIDDLE AVE. ELYRIA, OH

SURVEYED BY: ROBERT M. RUFFING SURV # 51055
 CLOSURE: 1: 75725
 MAP PAGE(S): 02-01-003-B
 APPROVED BY: AC DATE: November 09, 2023
 SCALE: 1 in = 50 ft PRIOR INSTRUMENT: 2023- 0924611