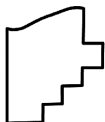
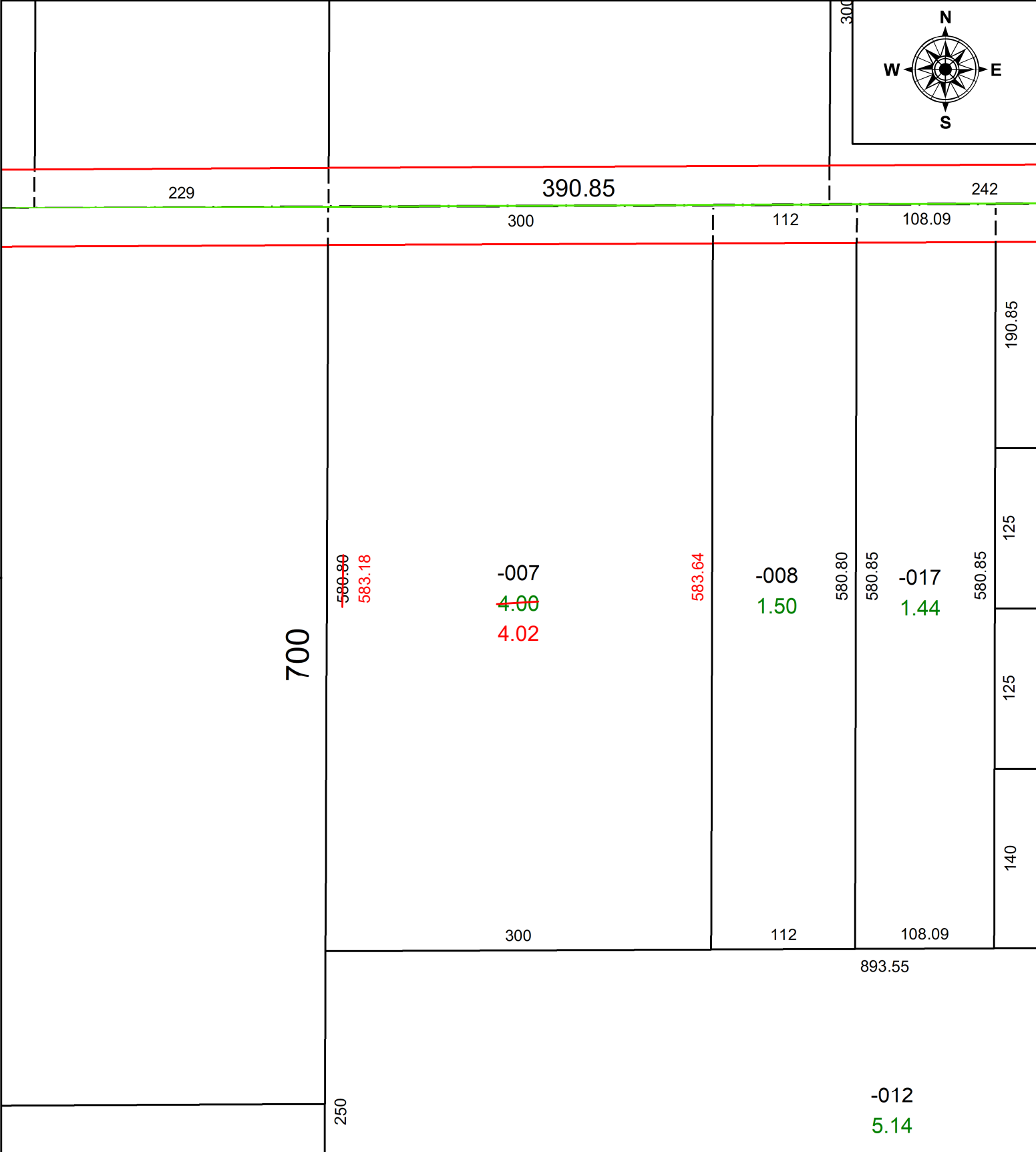


PARENT PARCEL: 12-00-009-000-007

CHILD PARCEL: **AC CORR PER SURV BY GEORGE HOFMANN**

STARTING POINT: C/L MARKS AND EMMONS RD

23-05178-C



SPLITS/DEEDS PROCESSED
LORAIN COUNTY TAX MAP DEPARTMENT
226 MIDDLE AVE. ELYRIA, OH

SURVEYED BY: GEORGE HOFMANN	SURV # 51033
CLOSURE: 1: 1666881	
MAP PAGE(S): 12-00-009	
APPROVED BY: AC	DATE: October 24, 2023
SCALE: 1 in = 100 ft	PRIOR INSTRUMENT: 2017- 0647495