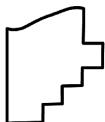
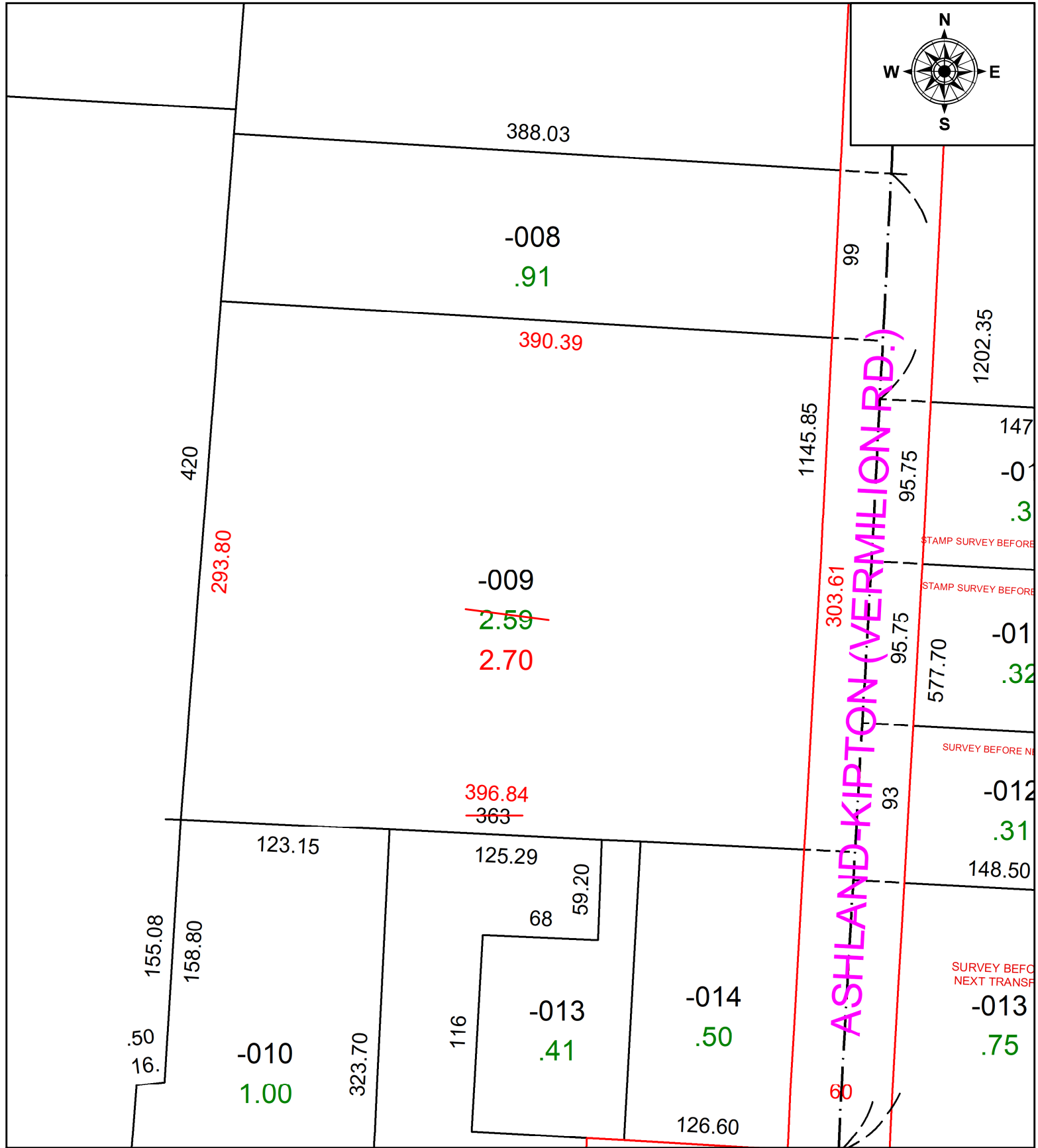
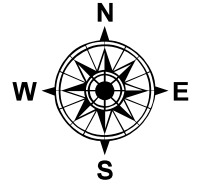


PARENT PARCEL: 17-07-007-000-009

CHILD PARCEL: AC. CORR. PER SURVEY JAMES A. COTTRELL

STARTING POINT: C/L OF S.R. 18 & S.R. 511

23-05163-A



SPLITS/DEEDS PROCESSED
LORAIN COUNTY TAX MAP DEPARTMENT
226 MIDDLE AVE. ELYRIA, OH

SURVEYED BY: JAMES A. COTTRELL SURVEY #: 51021
CLOSURE: 1:375214
MAP PAGE(S): 17-07-007
APPROVED BY: DMA DATE: 10/3/2023
SCALE: 1" = 25' PRIOR INSTRUMENT: 2016-0596678