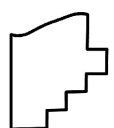
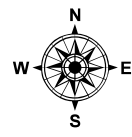
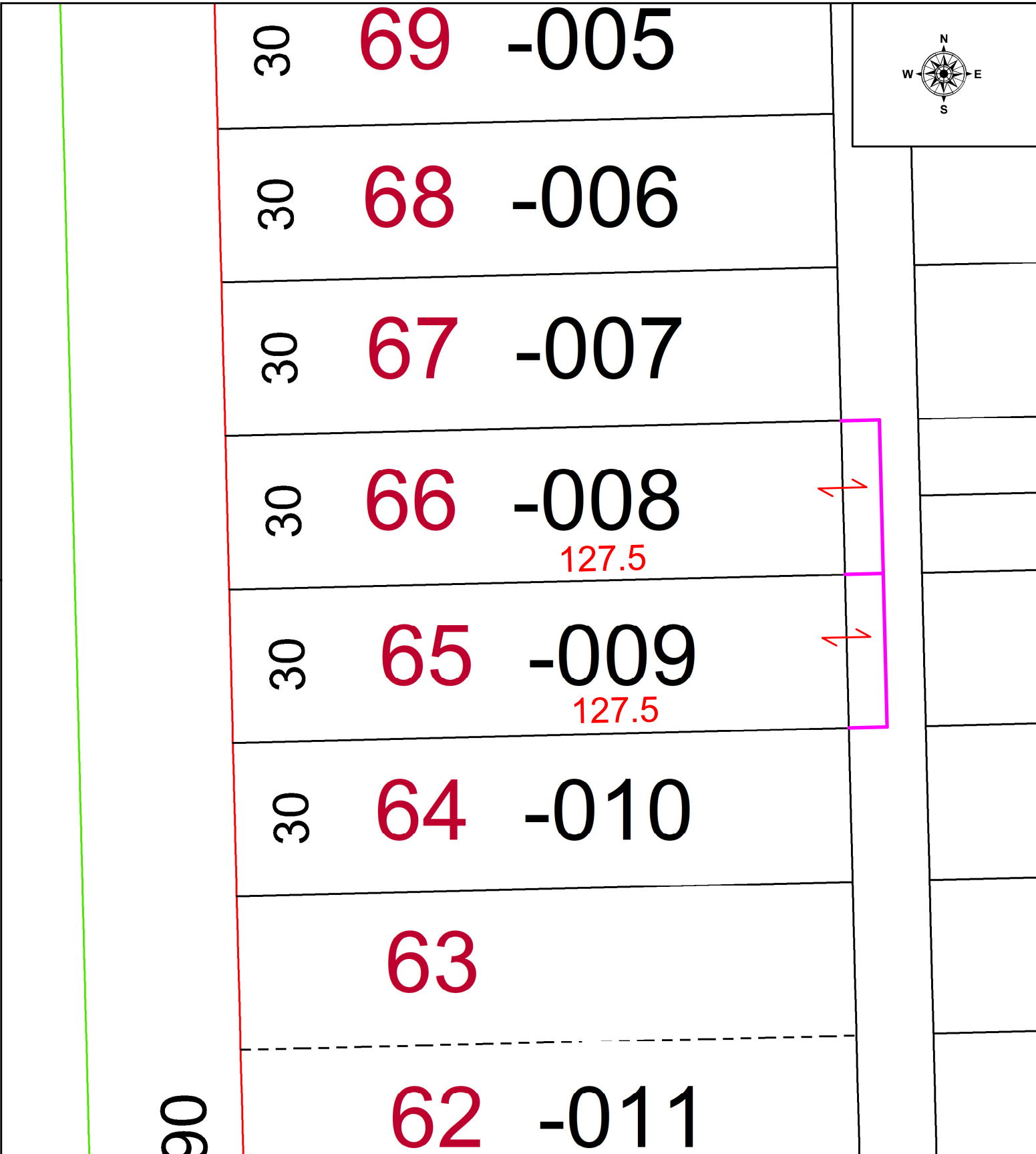


PARENT PARCEL: 03-00-101-113-008 & -009

CHILD PARCEL: DEPTH CORRECTION PER PRIOR INSTR. #2021-0841239

STARTING POINT:

23-05160-C



**SPLITS/DEEDS PROCESSED**  
 LORAIN COUNTY TAX MAP DEPARTMENT  
 226 MIDDLE AVE. ELYRIA, OH

SURVEYED BY: \_\_\_\_\_ N/A SURVEY # N/A  
 CLOSURE: \_\_\_\_\_ 1: \_\_\_\_\_  
 MAP PAGE(S): \_\_\_\_\_ 03-00-101  
 APPROVED BY: WRZ DATE: 9/27/2023  
 SCALE: 1" = 25' PRIOR INSTRUMENT: #2021-0841239