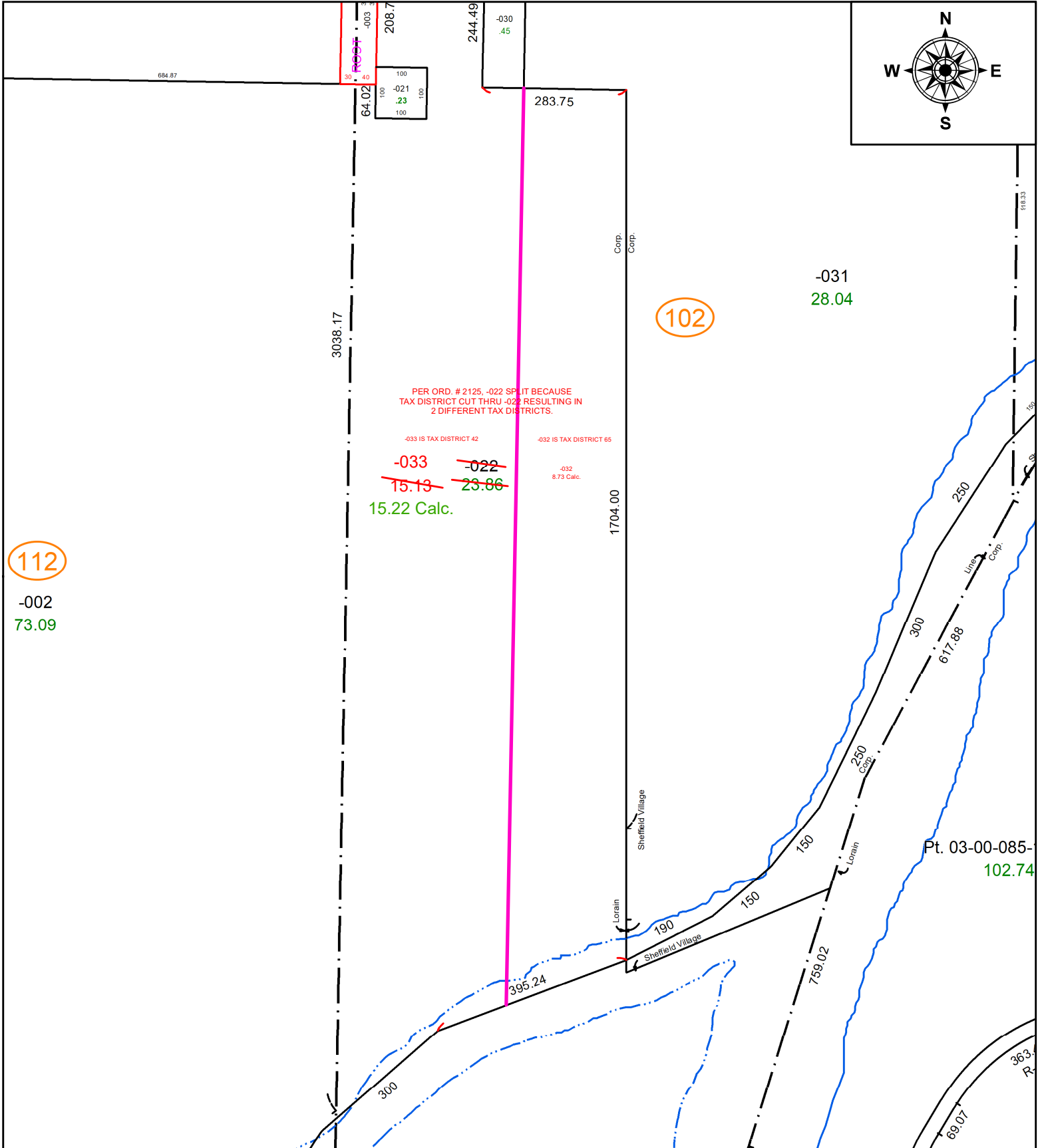


PARENT PARCEL: 03-00-058-102-022

CHILD PARCEL: 03-00-058-102-032 & -033--SPLIT PER ORD. # 2125 DUE TO TAX DISTRICTS

23-05153-C

STARTING POINT: N/A



PER ORD. # 2125, -022 SPLIT BECAUSE TAX DISTRICT CUT THRU -022 RESULTING IN 2 DIFFERENT TAX DISTRICTS.

-033 IS TAX DISTRICT 42

-032 IS TAX DISTRICT 65

~~-033~~

~~-022~~

~~15.13~~

~~23.86~~

15.22 Calc.

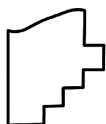
-032
8.73 Calc.

112

-002
73.09

-031
28.04

Pt. 03-00-085-
102.74



SPLITS/DEEDS PROCESSED
LORAIN COUNTY TAX MAP DEPARTMENT
226 MIDDLE AVE. ELYRIA, OH

SURVEYED BY:	N/A	SURVEY #:	N/A
CLOSURE:	N/A		
MAP PAGE(S):	03-00-058		
APPROVED BY:	DMA	DATE:	9/8/2023
SCALE:	1" = 250'	PRIOR INSTRUMENT:	N/A