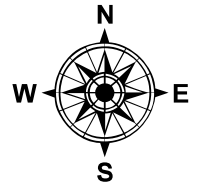


PARENT PARCEL: 08-14-010-000-026

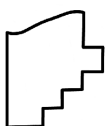
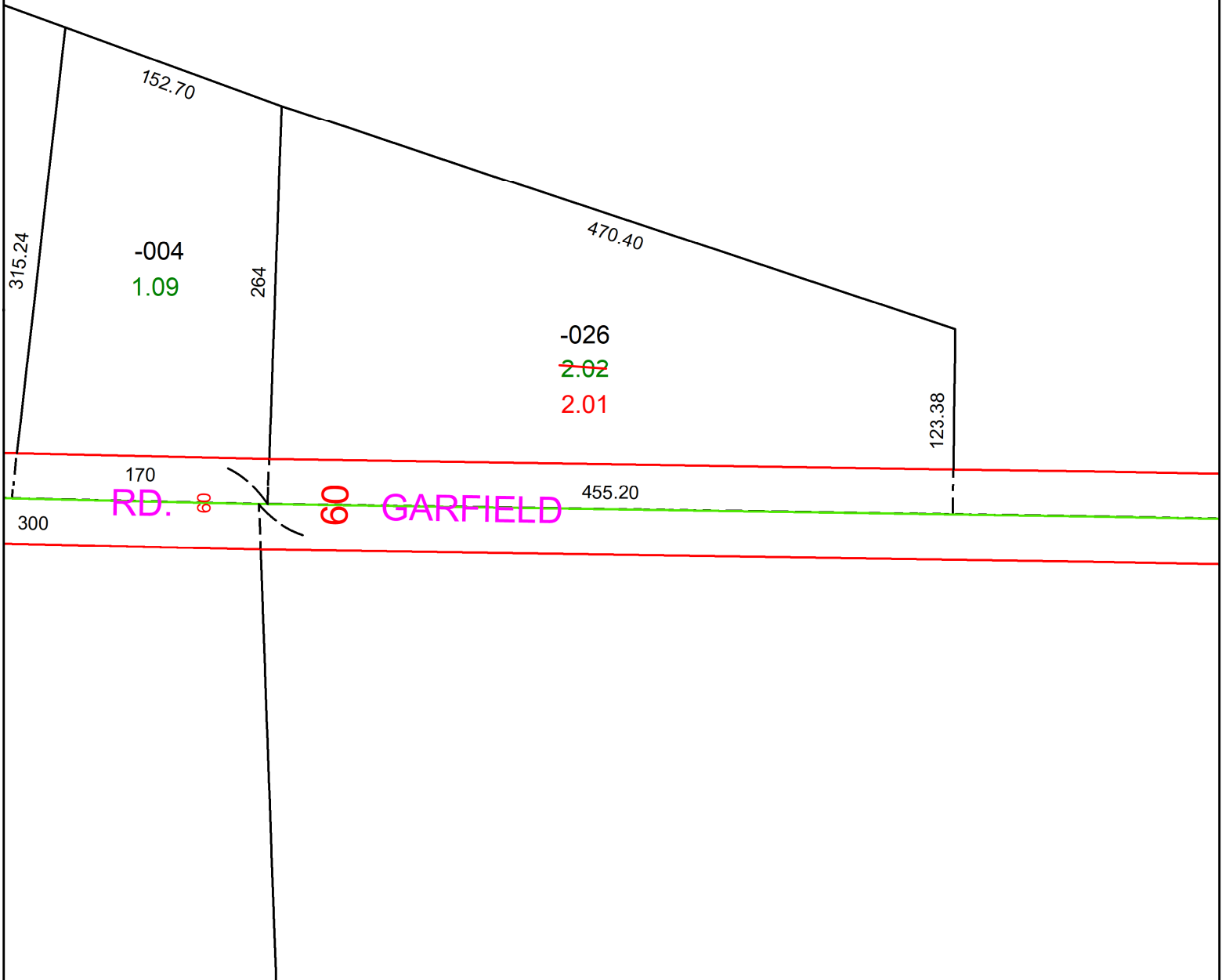
CHILD PARCEL:

STARTING POINT: AC CORR PER PRIOR DEED INSTRUMENT NO. 2021- 0814363

23-05147-A



-027  
23.93



**SPLITS/DEEDS PROCESSED**  
LORAIN COUNTY TAX MAP DEPARTMENT  
226 MIDDLE AVE. ELYRIA, OH

SURVEYED BY: THOMAS SIMON	SURV # N/A
CLOSURE: 1: 23241	
MAP PAGE(S): 08-14-010	
APPROVED BY: AC	DATE: August 31, 2023
SCALE: 1 in = 100 ft	PRIOR INSTRUMENT: 2021- 0814363