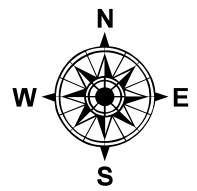
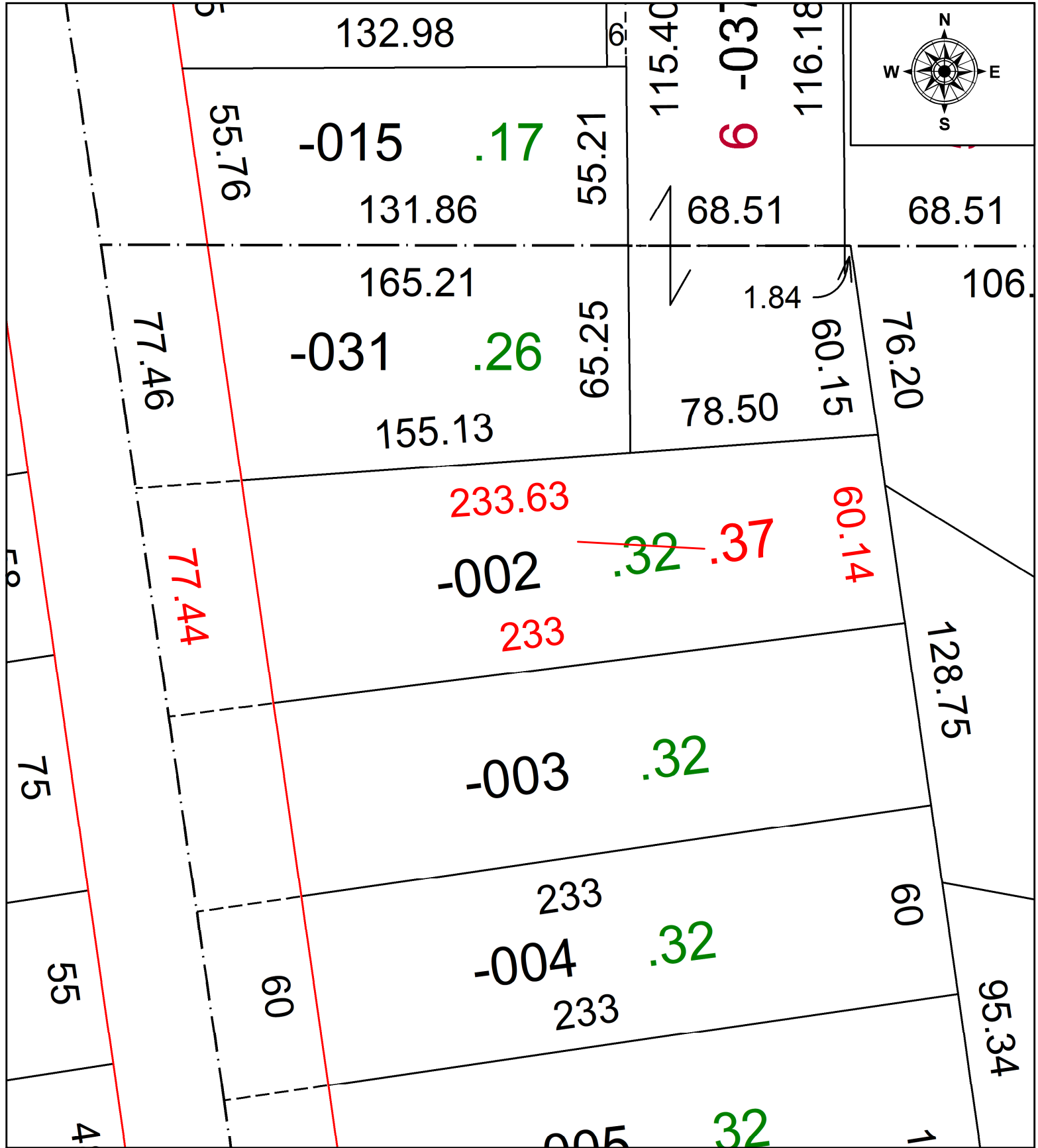


PARENT PARCEL: 06-25-003-101-002

CHILD PARCEL: AC. CORR. PER INSTRUMENT # 2014-0529290

STARTING POINT: N/A

23-05139-A



SPLITS/DEEDS PROCESSED
 LORAIN COUNTY TAX MAP DEPARTMENT
 226 MIDDLE AVE. ELYRIA, OH

SURVEYED BY: N/A SURVEY #: N/A
 CLOSURE: N/A
 MAP PAGE(S): 06-25-003
 APPROVED BY: DMA DATE: 8/24/2023
 SCALE: 1" = 25' PRIOR INSTRUMENT: 2014-0529290