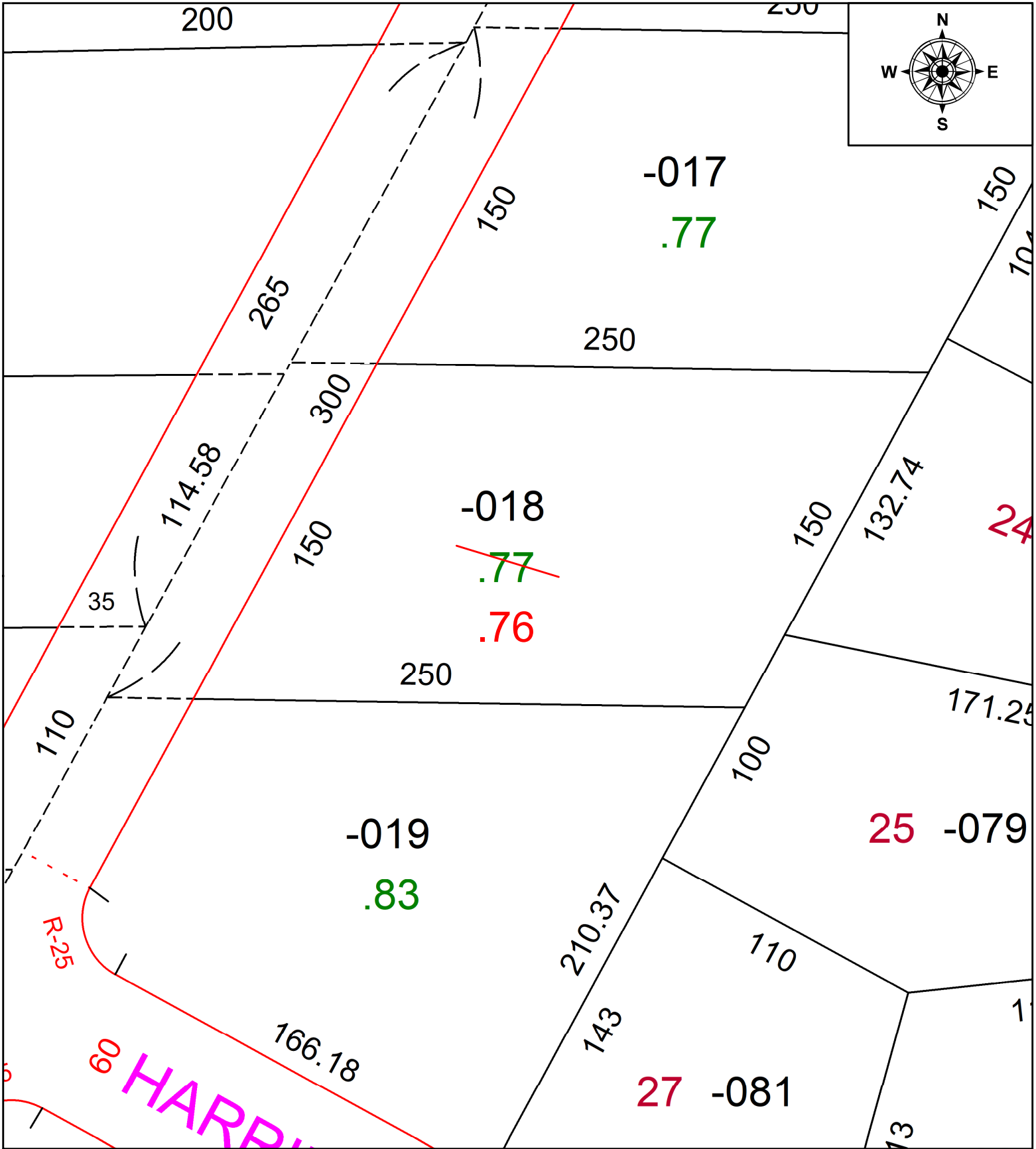


PARENT PARCEL: 04-00-011-108-018

CHILD PARCEL: AC. CORR. PER PRIOR INSTR. # 2009-0310801

STARTING POINT: N/A

23-05136-A



SPLITS/DEEDS PROCESSED
 LORAIN COUNTY TAX MAP DEPARTMENT
 226 MIDDLE AVE. ELYRIA, OH

SURVEYED BY: N/A SURVEY #: N/A
 CLOSURE: N/A
 MAP PAGE(S): 04-00-011
 APPROVED BY: DMA DATE: 8/22/2023
 SCALE: 1" = 50' PRIOR INSTRUMENT: 2009-0310801