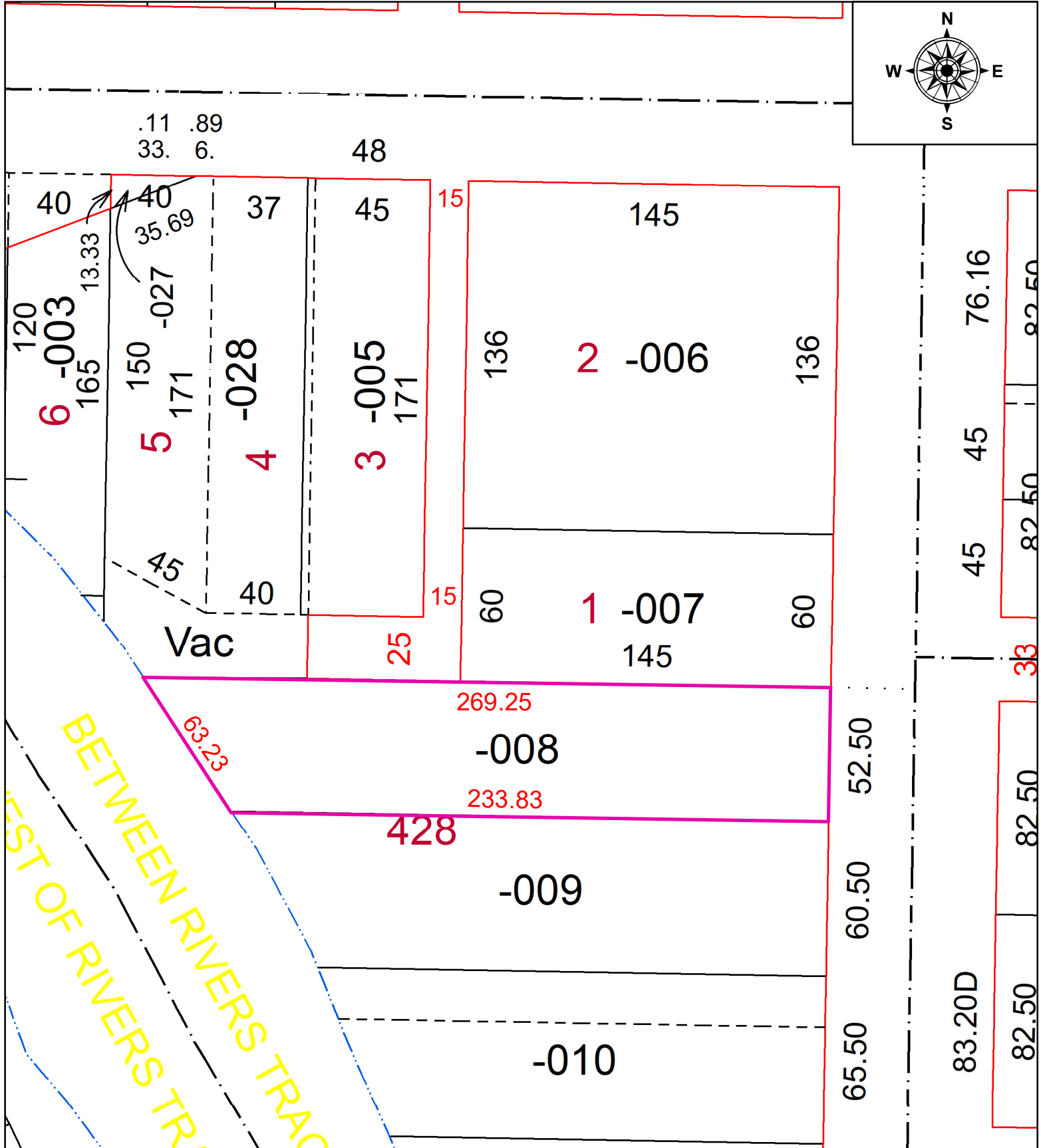
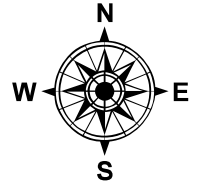


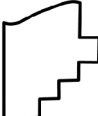
PARENT PARCEL: 06-26-041-000-008

CHILD PARCEL: NA

STARTING POINT: I.P. SET, S.E. CORNER OF S/L 1 OF MILLER'S SUB. PLAT VOL. 5, PG. 25

23-05117-C



 **SPLITS/DEEDS PROCESSED**
 LORAIN COUNTY TAX MAP DEPARTMENT
 226 MIDDLE AVE. ELYRIA, OH

SURVEYED BY: T. SIMON
 CLOSURE: 1:512341
 MAP PAGE(S): 06-26-041
 APPROVED BY: TJS DATE: 7/19/2023
 SCALE: 1" = 50' PRIOR INSTRUMENT: 2017-0652575