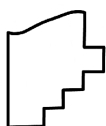
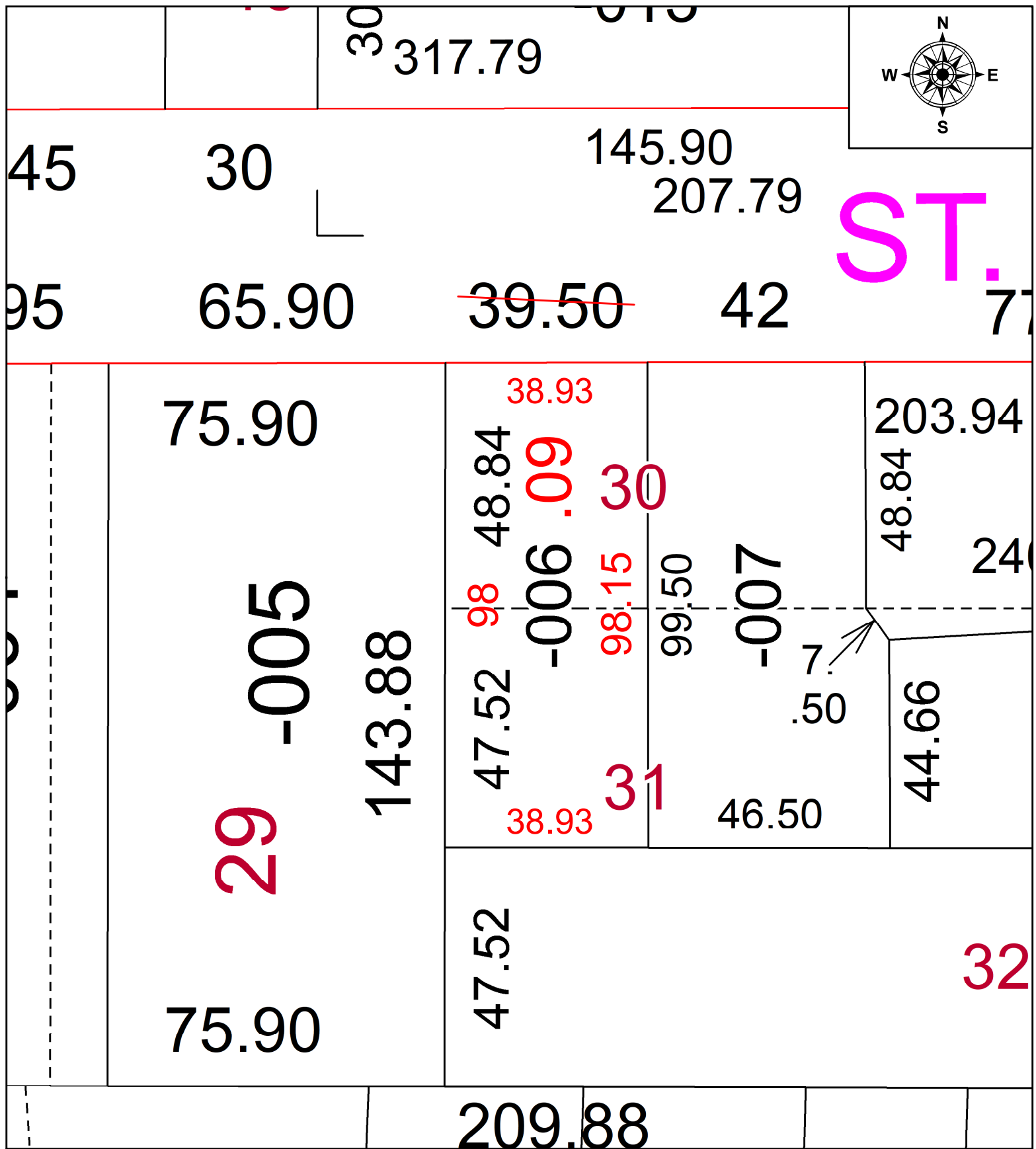


PARENT PARCEL: 06-24-085-104-006

CHILD PARCEL: FR. & DPETH TO AC. CORR.

STARTING POINT: N.E. CORNER OF S/L 29 C.A. BRONSON'S ADDITION

23-05114-C



SPLITS/DEEDS PROCESSED
 LORAIN COUNTY TAX MAP DEPARTMENT
 226 MIDDLE AVE. ELYRIA, OH

SURVEYED BY: THOMAS SIMON SURVEY #: 50942
 CLOSURE: 1:59745
 MAP PAGE(S): 06-24-085
 APPROVED BY: DMA DATE: 7/14/2023
 SCALE: 1" = 25' PRIOR INSTRUMENT: 2020-0782813