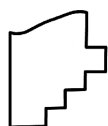
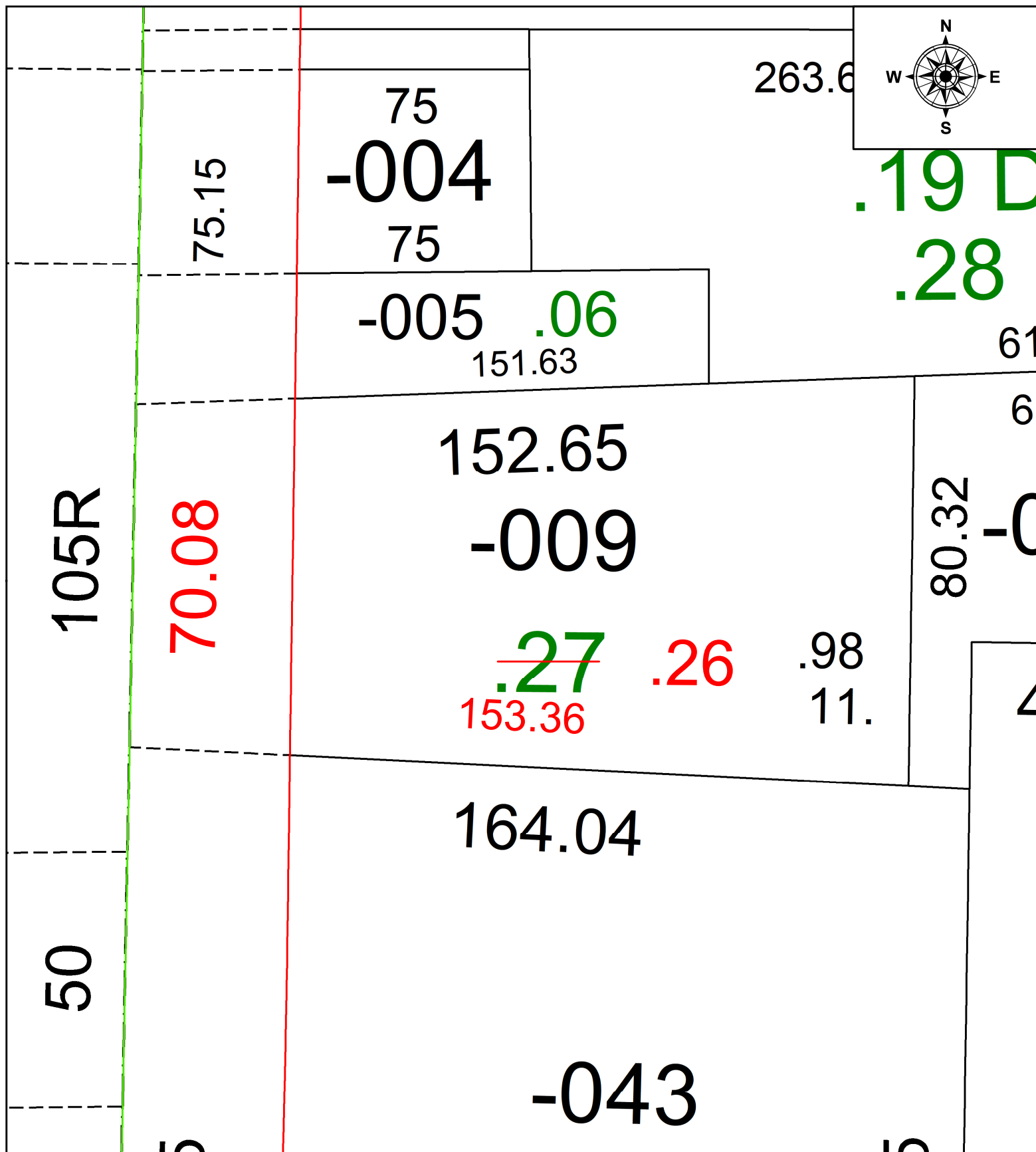


PARENT PARCEL: 05-00-011-101-009

CHILD PARCEL: AC CORR PER PRIOR DEED INST NO. 2009- 0284853

STARTING POINT: C/L OF PYLE-SOUTH AMHERST AND MILAN-ELYRIA RD

23-05113-A



SPLITS/DEEDS PROCESSED
LORAIN COUNTY TAX MAP DEPARTMENT
226 MIDDLE AVE. ELYRIA, OH

SURVEYED BY: WARDEN AND LAUDON	SURV # N/A
CLOSURE: 1: 2147483648	
MAP PAGE(S): 05-00-011	
APPROVED BY: AC	DATE: July 13, 2023
SCALE: 1 in = 25 ft	PRIOR INSTRUMENT: 2009- 0284853