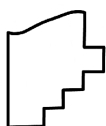
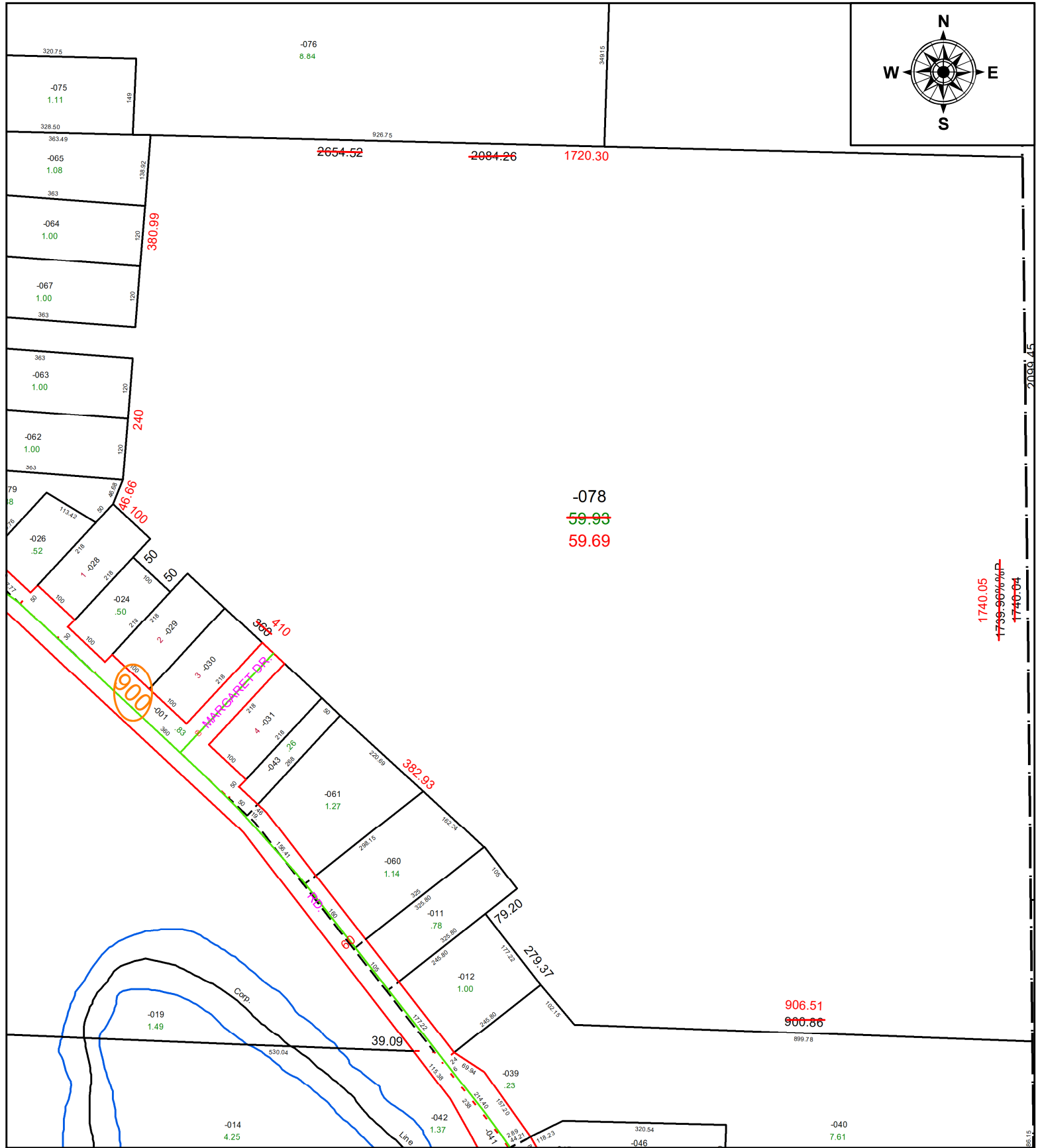
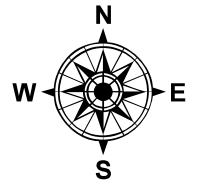


PARENT PARCEL: 01-00-018-000-061 & -078

CHILD PARCEL: **AC CORR PER SURV BY THOMAS M. SNEZEK**

STARTING POINT: C/L OF VERMILION AND HIGH BRIDGE RD

23-05110-A



SPLITS/DEEDS PROCESSED
LORAIN COUNTY TAX MAP DEPARTMENT
226 MIDDLE AVE. ELYRIA, OH

SURVEYED BY: THOMAS M. SNEZEK SURV # 50939

CLOSURE: 1: 82,508

MAP PAGE(S): 01-00-018

APPROVED BY: AC DATE: July 11, 2023

SCALE: 1 in = 250 ft PRIOR INSTRUMENT: VOL 1383, PG 579