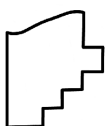
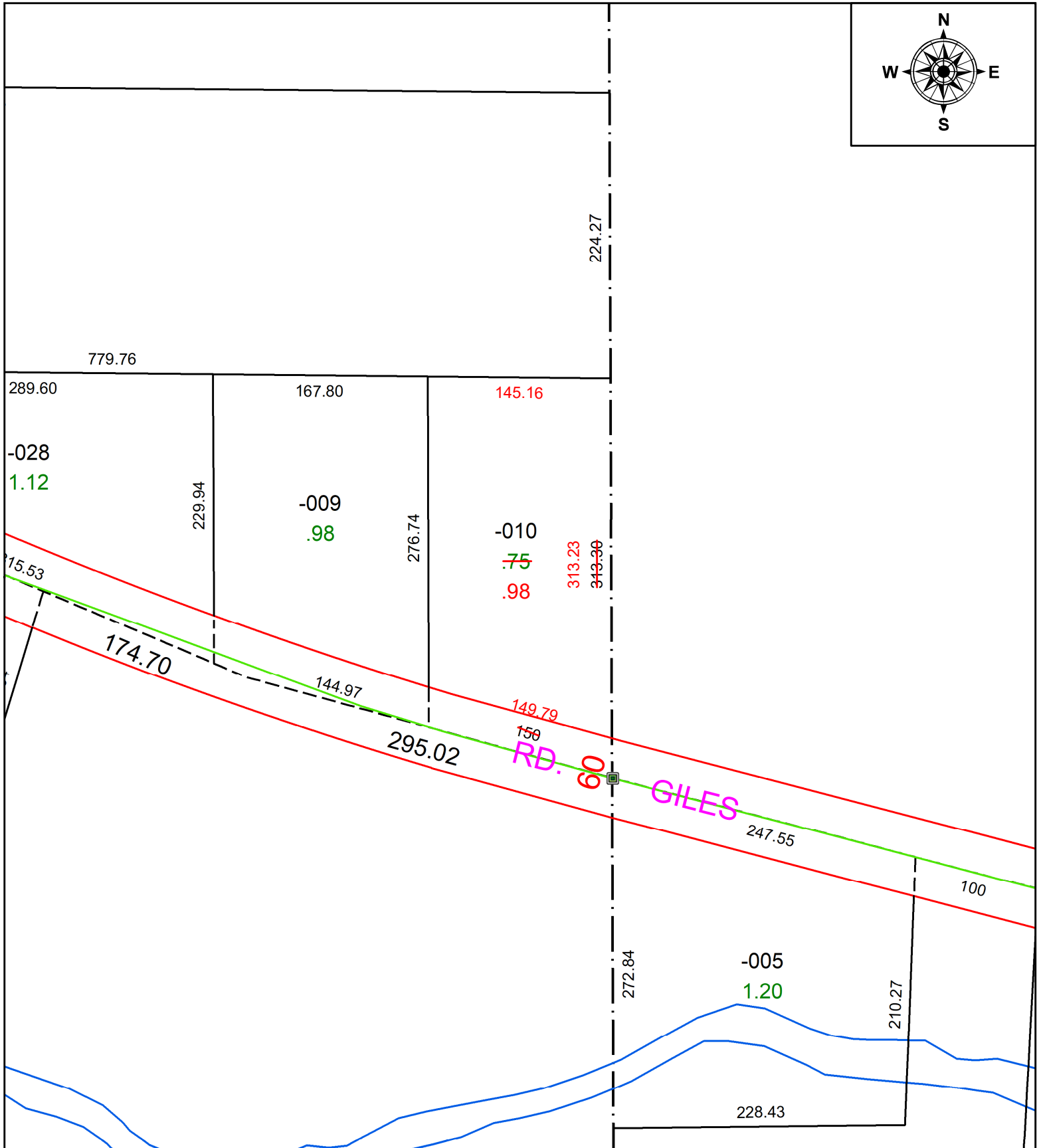
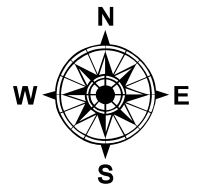


PARENT PARCEL: 11-00-074-000-010

CHILD PARCEL: **AC CORR PER SURV BY STEVEN J. METCALF**

STARTING POINT: C/L OF GILES RD AND E LINE OF O/L 74

23-05106-A



SPLITS/DEEDS PROCESSED
 LORAIN COUNTY TAX MAP DEPARTMENT
 226 MIDDLE AVE. ELYRIA, OH

SURVEYED BY: STEVEN J. METCALF	SURV # 50928
CLOSURE: 1: 104733	
MAP PAGE(S): 11-00-074	
APPROVED BY: AC	DATE: June 29, 2023
SCALE: 1 in = 100 ft	PRIOR INSTRUMENT: 2023- 0913944