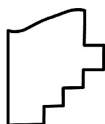
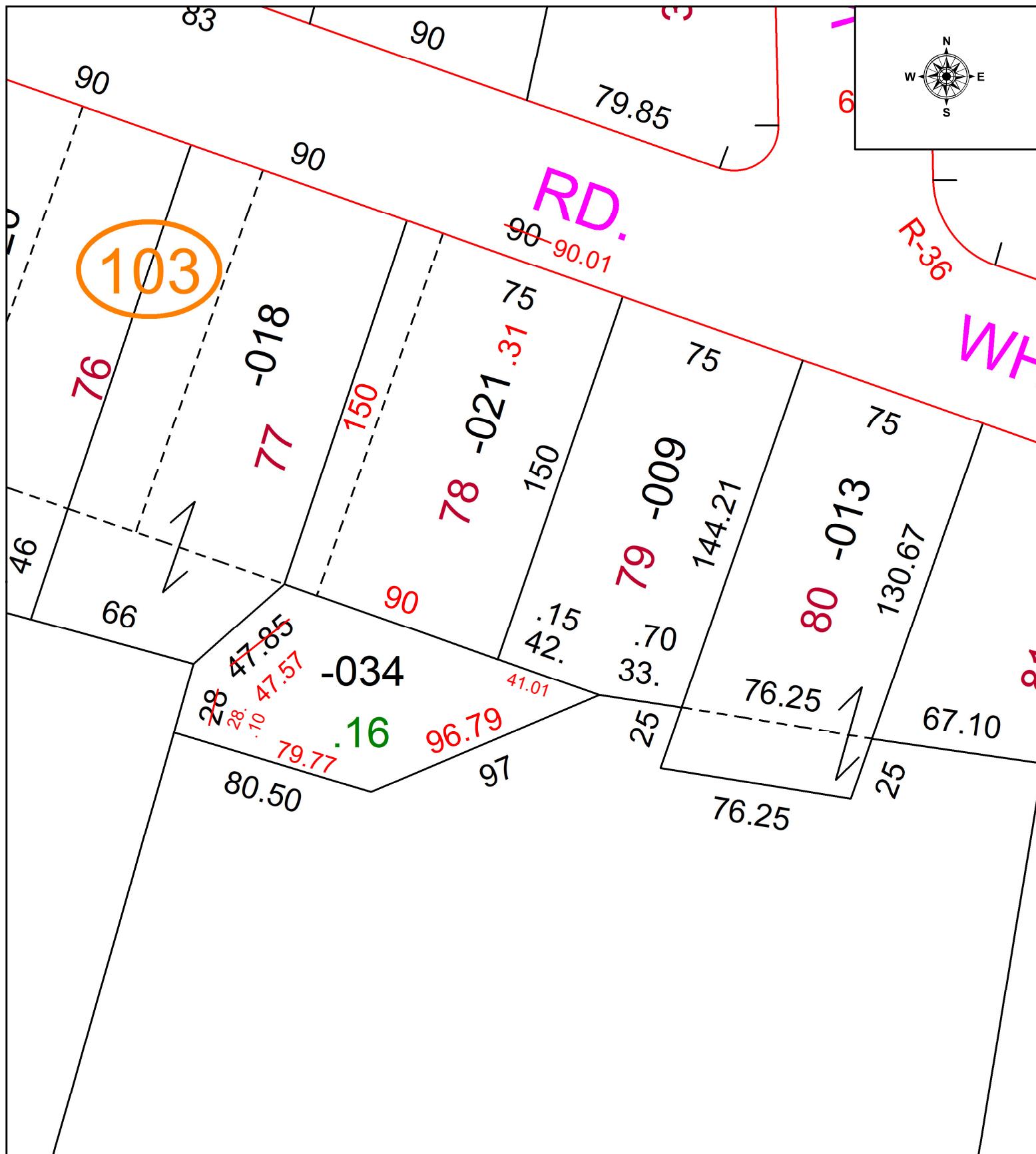


PARENT PARCEL: 06-25-176-103-021 & 06-25-176-104-034

CHILD PARCEL: FRONTAGE & DEPTH TO AC CORR PER SURVEYOR ROBERT RUFFING

STARTING POINT: NORTHEAST CORNER OF SUBLOT 78 IN COUNTRY CLUB ESTATES NO. 1

23-05103-A



**SPLITS/DEEDS PROCESSED**  
LORAIN COUNTY TAX MAP DEPARTMENT  
226 MIDDLE AVE. ELYRIA, OH

SURVEYED BY:	ROBERT RUFFING	SURVEY # 50924
CLOSURE:	1: 48001	
MAP PAGE(S):	06-25-176	
APPROVED BY:	WRZ	DATE: 6/21/2023
SCALE:	1" = 50	PRIOR INSTRUMENT: #2022-0894548