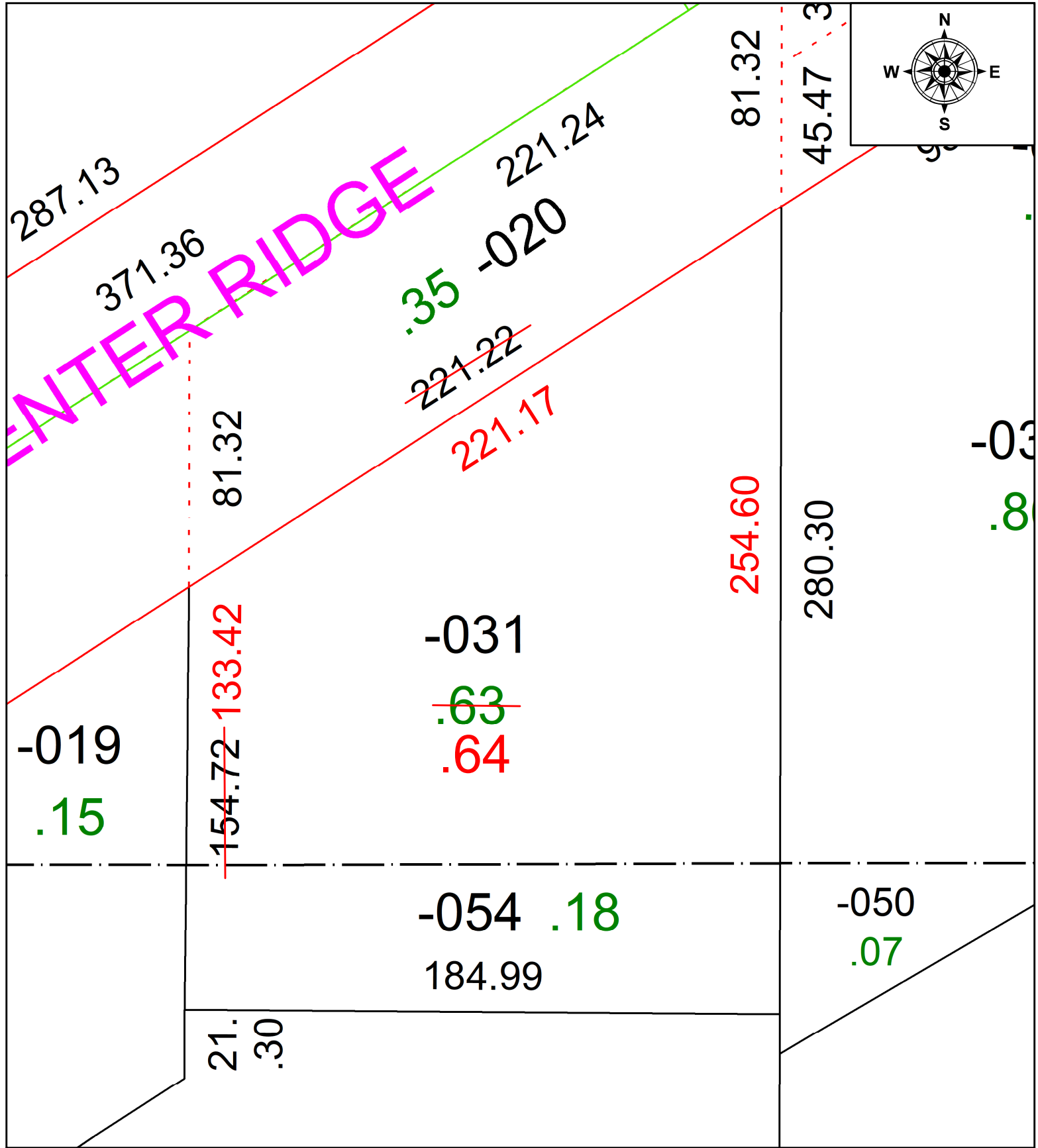


PARENT PARCEL: 07-00-017-130-031

CHILD PARCEL: AC CORR. PER SURVEY BY STEVEN METCALF

STARTING POINT: INTERSECTION OF PITTS BLVD & CENTER RIDGE RD CENTERLINES

23-05100-C



SPLITS/DEEDS PROCESSED
 LORAIN COUNTY TAX MAP DEPARTMENT
 226 MIDDLE AVE. ELYRIA, OH

SURVEYED BY: STEVEN J. METCALF SURVEY #: 50920
 CLOSURE: 1: 400,973
 MAP PAGE(S): 17-00-017
 APPROVED BY: SP DATE: 6/26/2023
 SCALE: 1" = 40' PRIOR INSTRUMENT: 2013-0475372