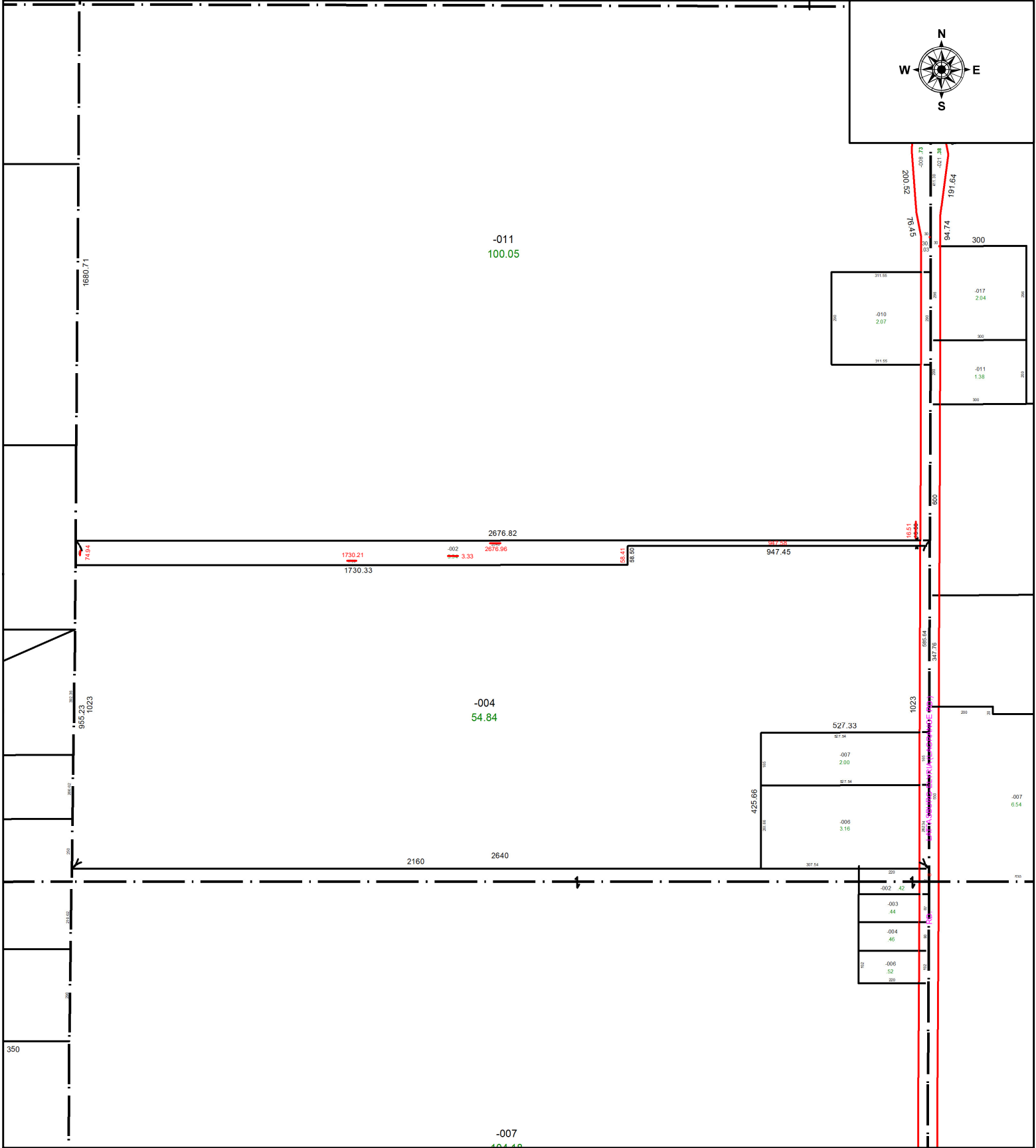
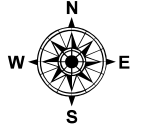


PARENT PARCEL: 15-00-016-000-002

CHILD PARCEL: ACREAGE CORRECTION PER SURVEYOR JEREMY VAN OSTRAN

STARTING POINT: SOUTHEAST CORNER OF S/L 12 RODAK RIDGE SUBDIVISION NO. 1

23-05099-A



SPLITS/DEEDS PROCESSED
LORAIN COUNTY TAX MAP DEPARTMENT
226 MIDDLE AVE. ELYRIA, OH

SURVEYED BY: JEREMY VAN OSTRAN SURVEY # 50918
CLOSURE: 1: 649936
MAP PAGE(S): 15-00-016
APPROVED BY: WRZ DATE: 6/13/2023
SCALE: 1" = 400 PRIOR INSTRUMENT: DV 310 PG 358