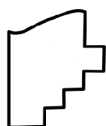
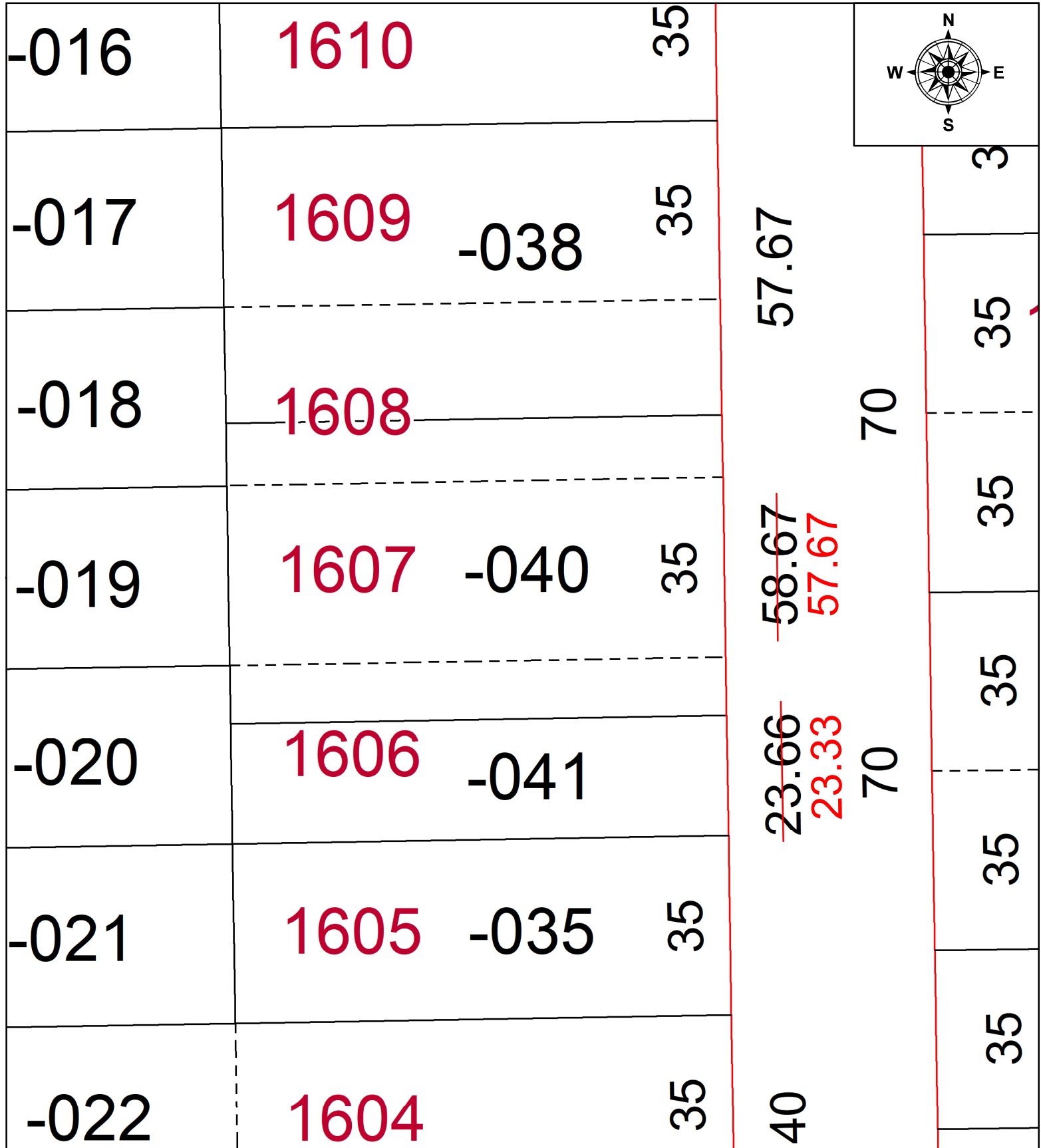


PARENT PARCEL: 01-00-002-104-040 & -041

CHILD PARCEL: FRONTAGE CORRECTION

STARTING POINT: NA

23-05097-C



SPLITS/DEEDS PROCESSED
LORAIN COUNTY TAX MAP DEPARTMENT
226 MIDDLE AVE. ELYRIA, OH

SURVEYED BY: NA
CLOSURE: 1: INF
MAP PAGE(S): 1-00-002
APPROVED BY: TJS DATE: 6/8/2023
SCALE: 1" = 25' PRIOR INSTRUMENT: 2021-0806304 & 2022-0902367