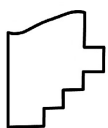
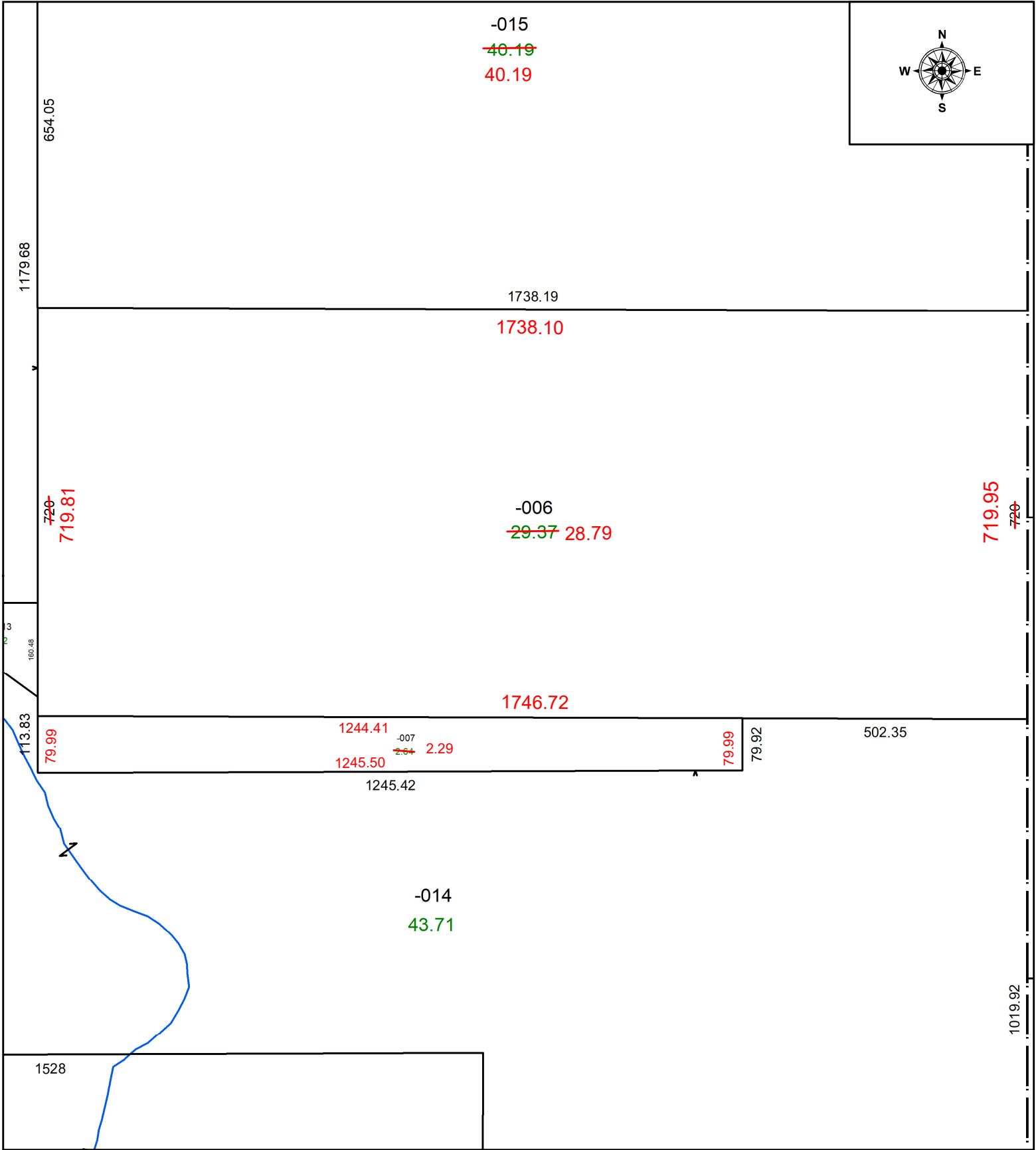


PARENT PARCEL: 15-00-019-000-006 & -007

CHILD PARCEL: N/A ACREAGE CORRECTION PER SURVEYOR STEVEN METCALF

STARTING POINT: SOUTHEASTERLY CORNER OF O.L. 19

23-05078-C



SPLITS/DEEDS PROCESSED
 LORAIN COUNTY TAX MAP DEPARTMENT
 226 MIDDLE AVE. ELYRIA, OH

SURVEYED BY: STEVEN METCALF SURVEY # 50886
 CLOSURE: 1: 25776
 MAP PAGE(S): 09-00-015
 APPROVED BY: WRZ DATE: 5/8/2023
 SCALE: 1" = 225 PRIOR INSTRUMENT: #2013-0489608