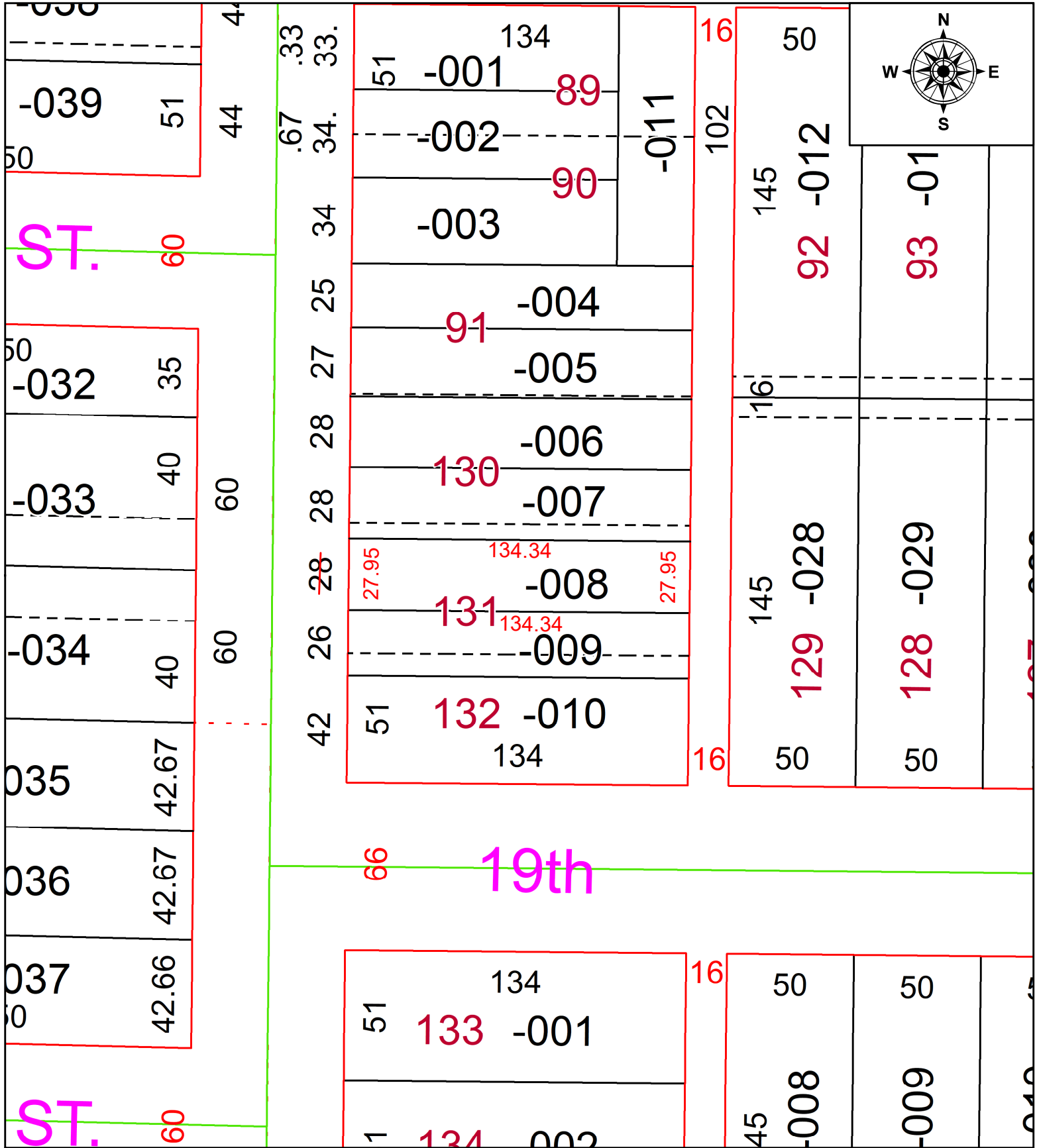


PARENT PARCEL: 02-01-006-139-008

CHILD PARCEL: FRONTAGE & DEPTH TO AC CORR PER SURV BY THOMAS A SIMON

STARTING POINT: C/L OF W 18TH ST AND E LINE OF WASHINGTON AVE

23-05077-A



SPLITS/DEEDS PROCESSED
 LORAIN COUNTY TAX MAP DEPARTMENT
 226 MIDDLE AVE. ELYRIA, OH

SURVEYED BY: THOMAS A. SIMON SURV # 50885
 CLOSURE: 1: 2147483648
 MAP PAGE(S): 02-01-006
 APPROVED BY: AC DATE: May 10, 2023
 SCALE: 1 in = 50 ft PRIOR INSTRUMENT: 2022- 0877923