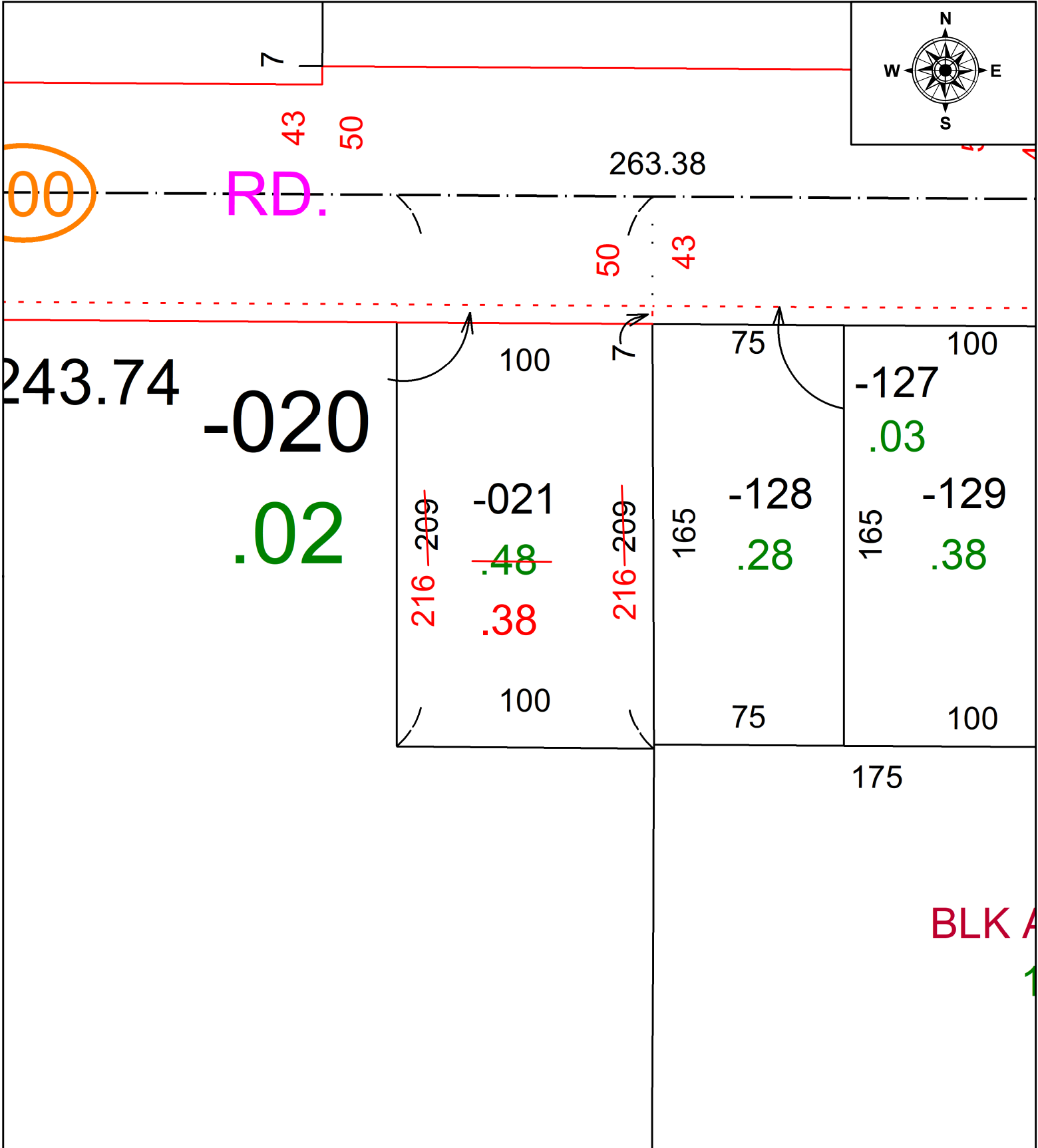


PARENT PARCEL: 04-00-029-101-021

CHILD PARCEL: AC. CORR. PER PRIOR DV 15 PAGE 837

STARTING POINT: N/A

23-05076-A



SPLITS/DEEDS PROCESSED
 LORAIN COUNTY TAX MAP DEPARTMENT
 226 MIDDLE AVE. ELYRIA, OH

SURVEYED BY: N/A SURVEY #: N/A
 CLOSURE: N/A
 MAP PAGE(S): 04-00-029
 APPROVED BY: SP DATE: 5/9/2023
 SCALE: 1" = 50' PRIOR INSTRUMENT: DV 15 PAGE 837