

PARENT PARCEL:

09-00-087-104-016

CHILD PARCEL:

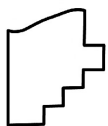
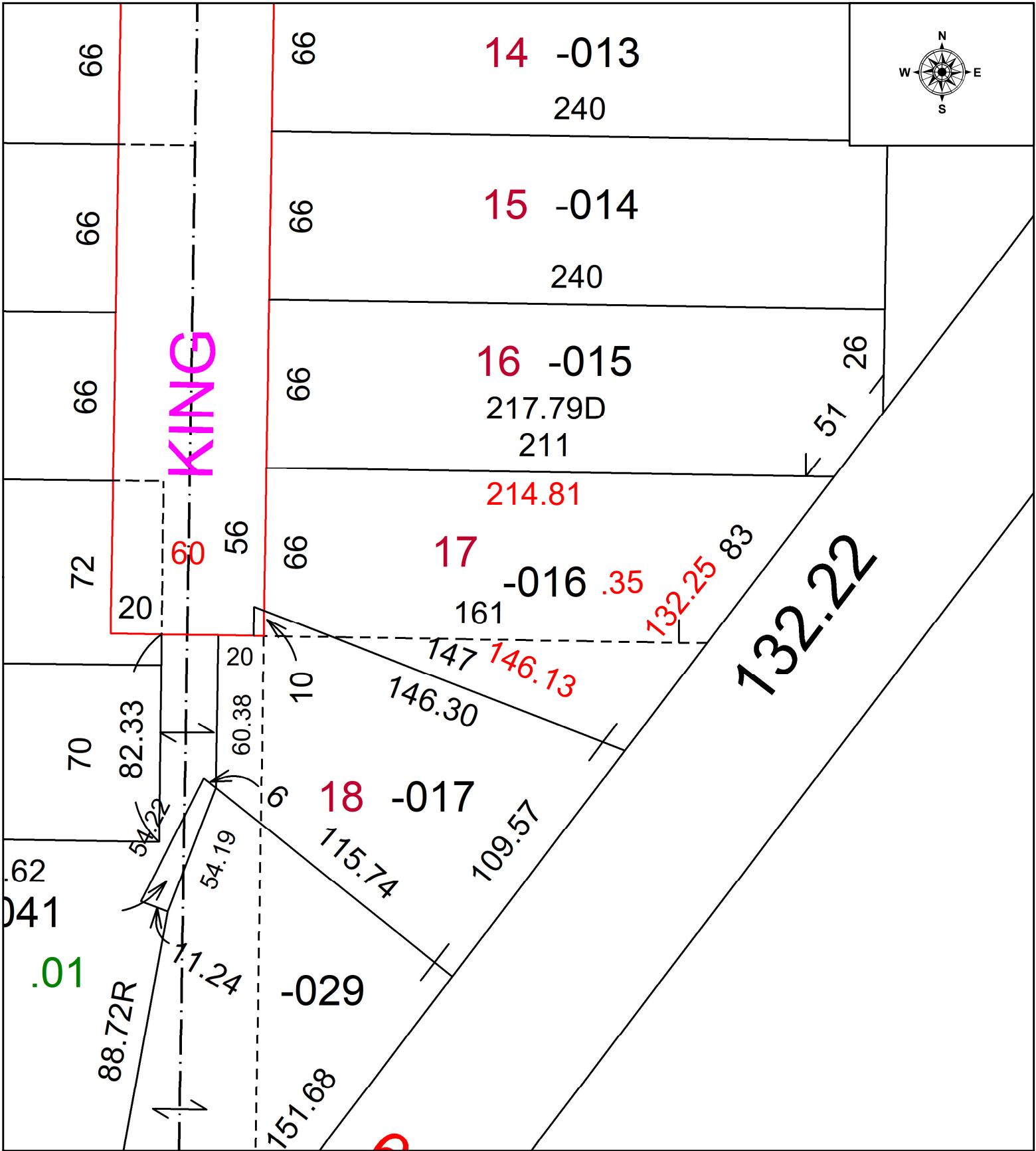
N/A

FRONTAGE & DEPTH TO ACREAGE CORRECTION

STARTING POINT:

INTERSECTION OF C/LS OF EAST COLLEGE ST & KING ST

23-05071-C



**SPLITS/DEEDS PROCESSED**  
 LORAIN COUNTY TAX MAP DEPARTMENT  
 226 MIDDLE AVE. ELYRIA, OH

SURVEYED BY: GEORGE HOFFMAN SURVEY # 50876  
 CLOSURE: 1: 158861  
 MAP PAGE(S): 09-00-087  
 APPROVED BY: WRZ DATE: 4/26/2023  
 SCALE: 1" = 50 PRIOR INSTRUMENT: #2020-0789738