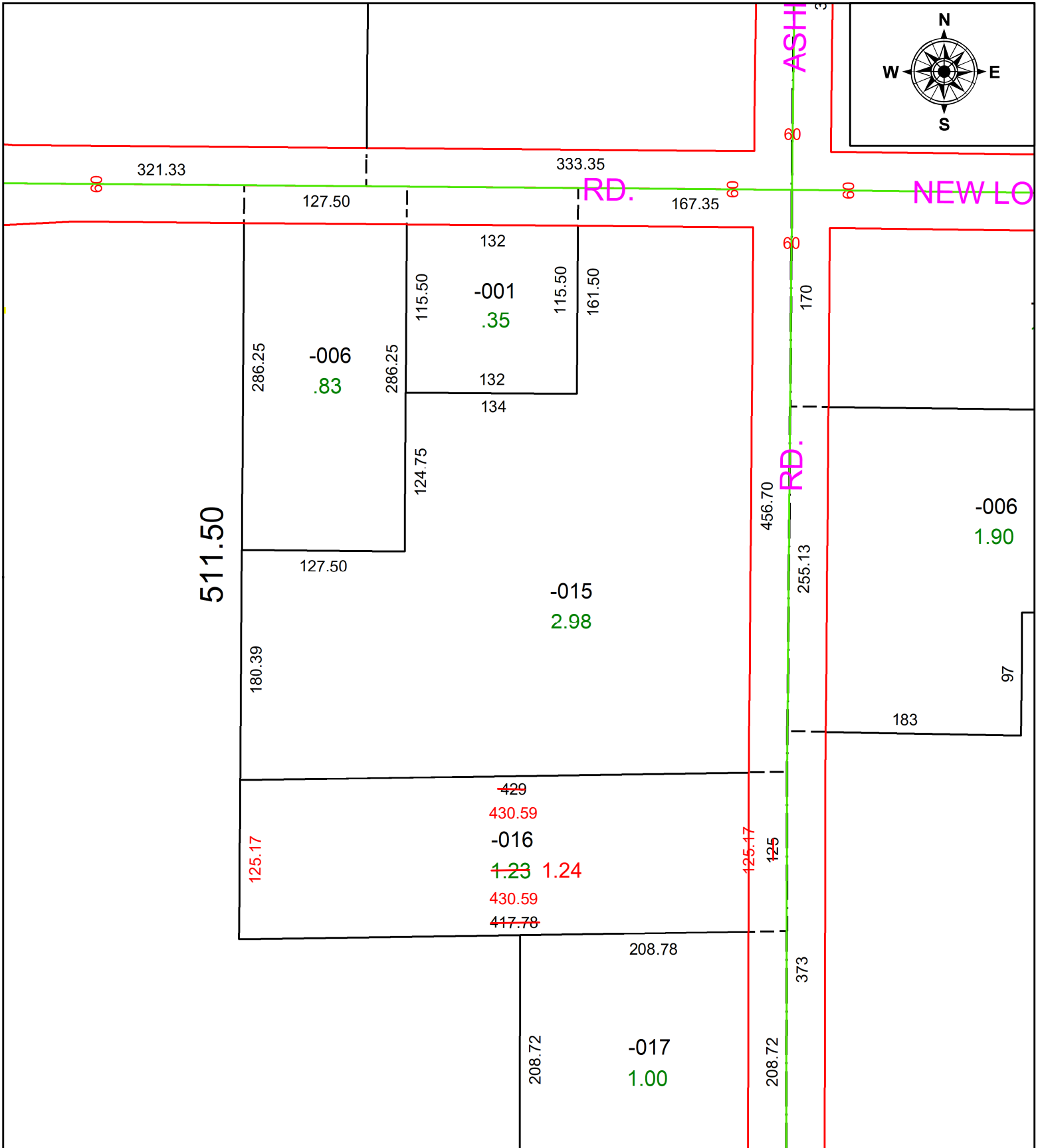


PARENT PARCEL: 20-04-012-000-016

CHILD PARCEL: **AC CORR PER SURV BY NATHANIEL B. RAMSEY**

STARTING POINT: C/L OF ST RT 511 AND ST RT 162

23-05062-C



SPLITS/DEEDS PROCESSED
 LORAIN COUNTY TAX MAP DEPARTMENT
 226 MIDDLE AVE. ELYRIA, OH

SURVEYED BY: NATHANIEL B. RAMSEY **SURV # 50854**
CLOSURE: 1: 2147483648
MAP PAGE(S): 20-04-012
APPROVED BY: AC **DATE:** April 03, 2023
SCALE: 1 in = 100 ft **PRIOR INSTRUMENT:** 2015- 0532110