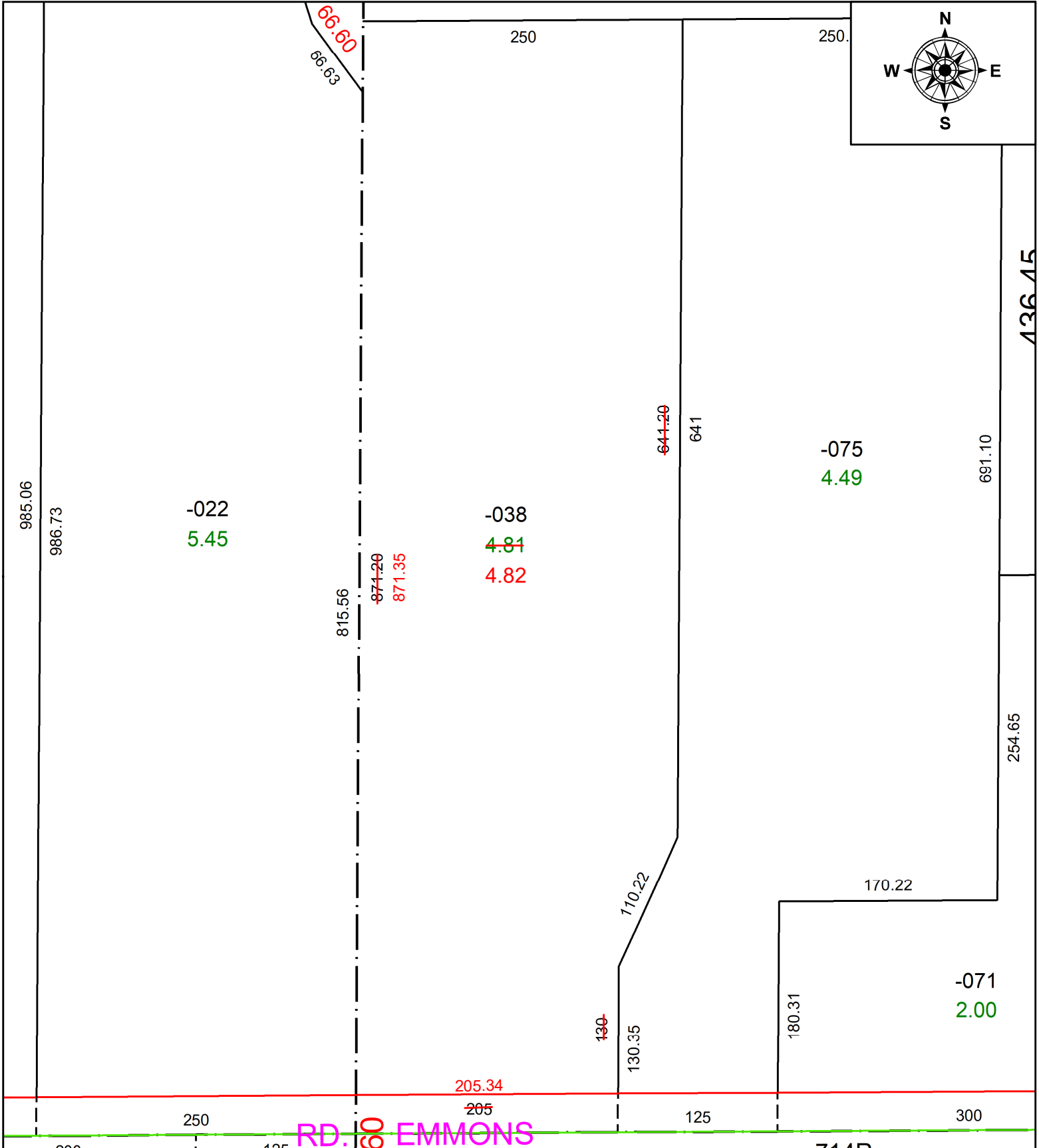


PARENT PARCEL: 12-00-008-000-038

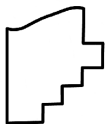
CHILD PARCEL: **AC CORR PER SURV BY JOSHUA S. RIEDY**

23-05060-C

STARTING POINT: SW CORNER OF O/L 8



RD. EMMONS



**SPLITS/DEEDS PROCESSED**  
LORAIN COUNTY TAX MAP DEPARTMENT  
226 MIDDLE AVE. ELYRIA, OH

SURVEYED BY: JOSHUA S. RIEDY	SURV # 50852
CLOSURE: 1: 214268	
MAP PAGE(S): 12-00-008	
APPROVED BY: AC	DATE: March 30, 2023
SCALE: 1 in = 100 ft	PRIOR INSTRUMENT: 2015- 0570190