

PARENT PARCEL:

02-02-003-102-015

CHILD PARCEL:

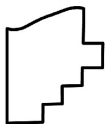
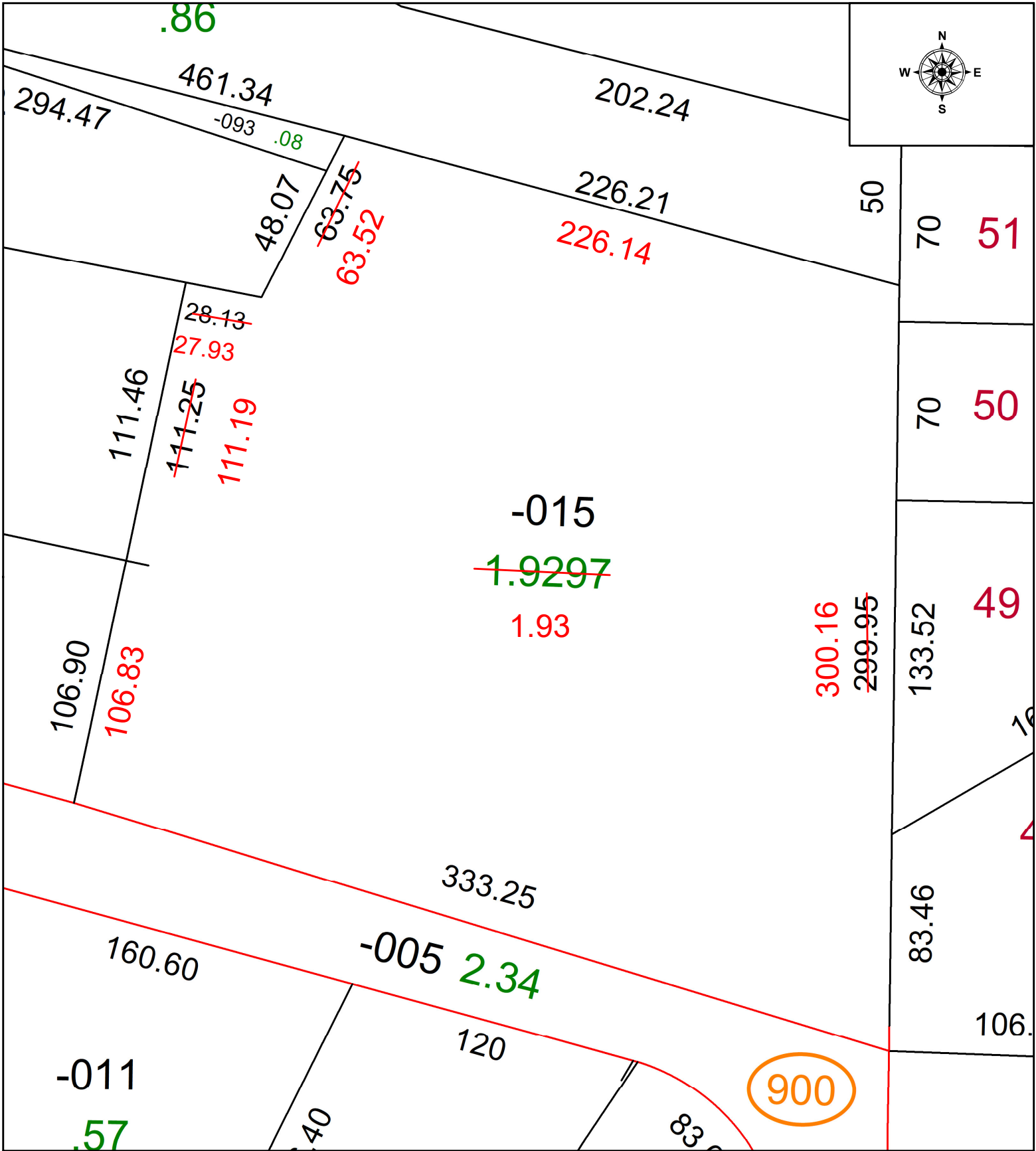
N/A

MAP CORRECTION ONLY

STARTING POINT:

SOUTHWEST CORNER OF S/L 48 OF ST. JAMES RESERVE SUBDIVISION NO. 2

23-05056-C



**SPLITS/DEEDS PROCESSED**  
 LORAIN COUNTY TAX MAP DEPARTMENT  
 226 MIDDLE AVE. ELYRIA, OH

SURVEYED BY: PATRICK MCGANNON SURVEY # 50853  
 CLOSURE: 1: 245130  
 MAP PAGE(S): 02-02-003  
 APPROVED BY: WRZ DATE: 4/3/2023  
 SCALE: 1" = 50 PRIOR INSTRUMENT: #2022-0892365