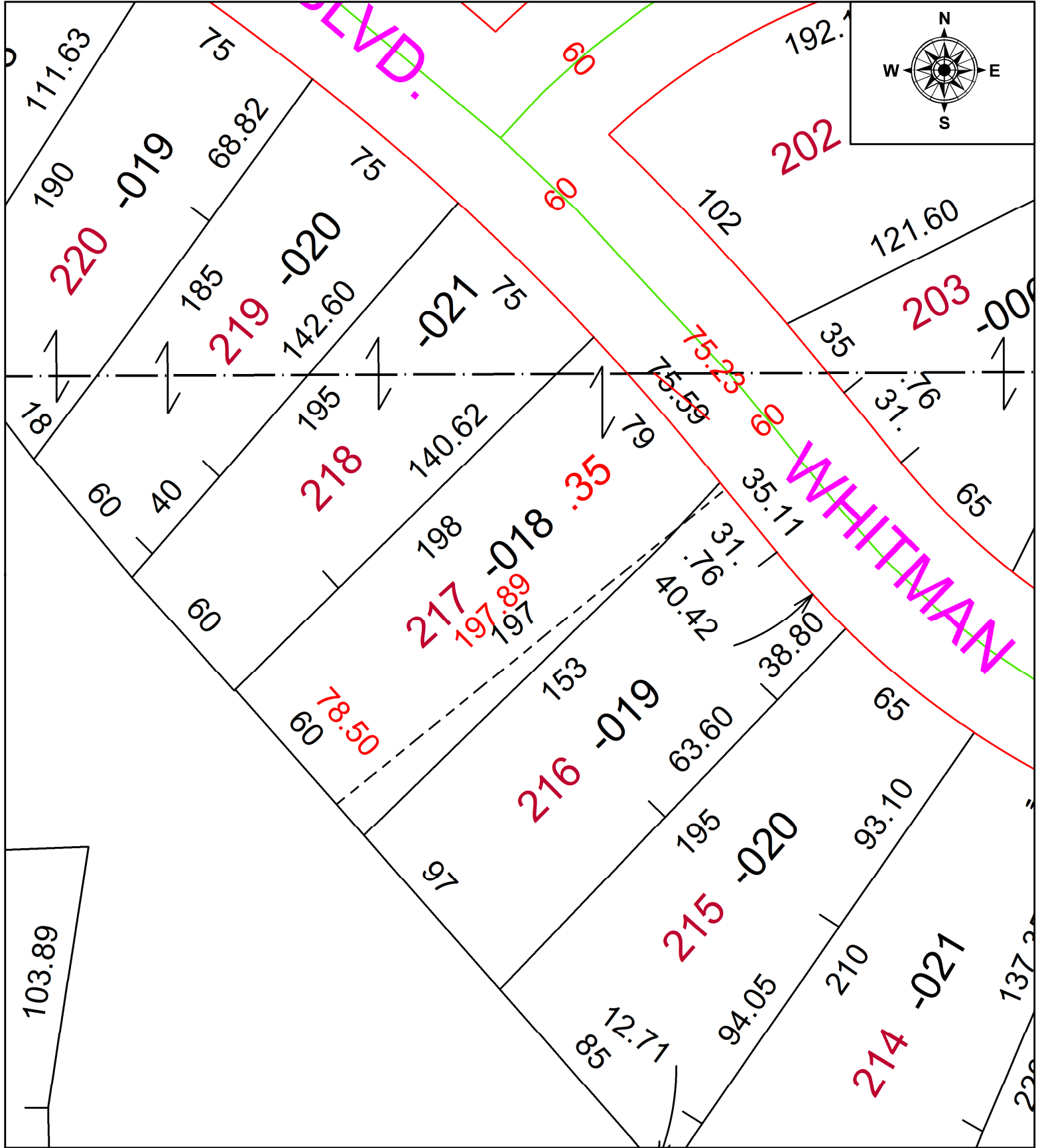


PARENT PARCEL: 06-25-031-114-018

CHILD PARCEL: **FRONT & DEPTH TO AC CORR PER SURV BY THOMAS A. SIMON**

23-05055-C

STARTING POINT: NE CORNER OF S/L 218



SPLITS/DEEDS PROCESSED
 LORAIN COUNTY TAX MAP DEPARTMENT
 226 MIDDLE AVE. ELYRIA, OH

SURVEYED BY:	THOMAS A. SIMON	SURV # 50848
CLOSURE:	1: 135875	
MAP PAGE(S):	06-25-037	
APPROVED BY:	AC	DATE: March 28, 2023
SCALE:	1 in = 50 ft	PRIOR INSTRUMENT: 2012- 0430242