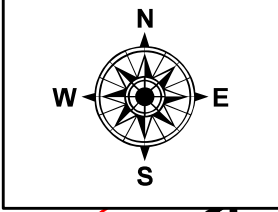
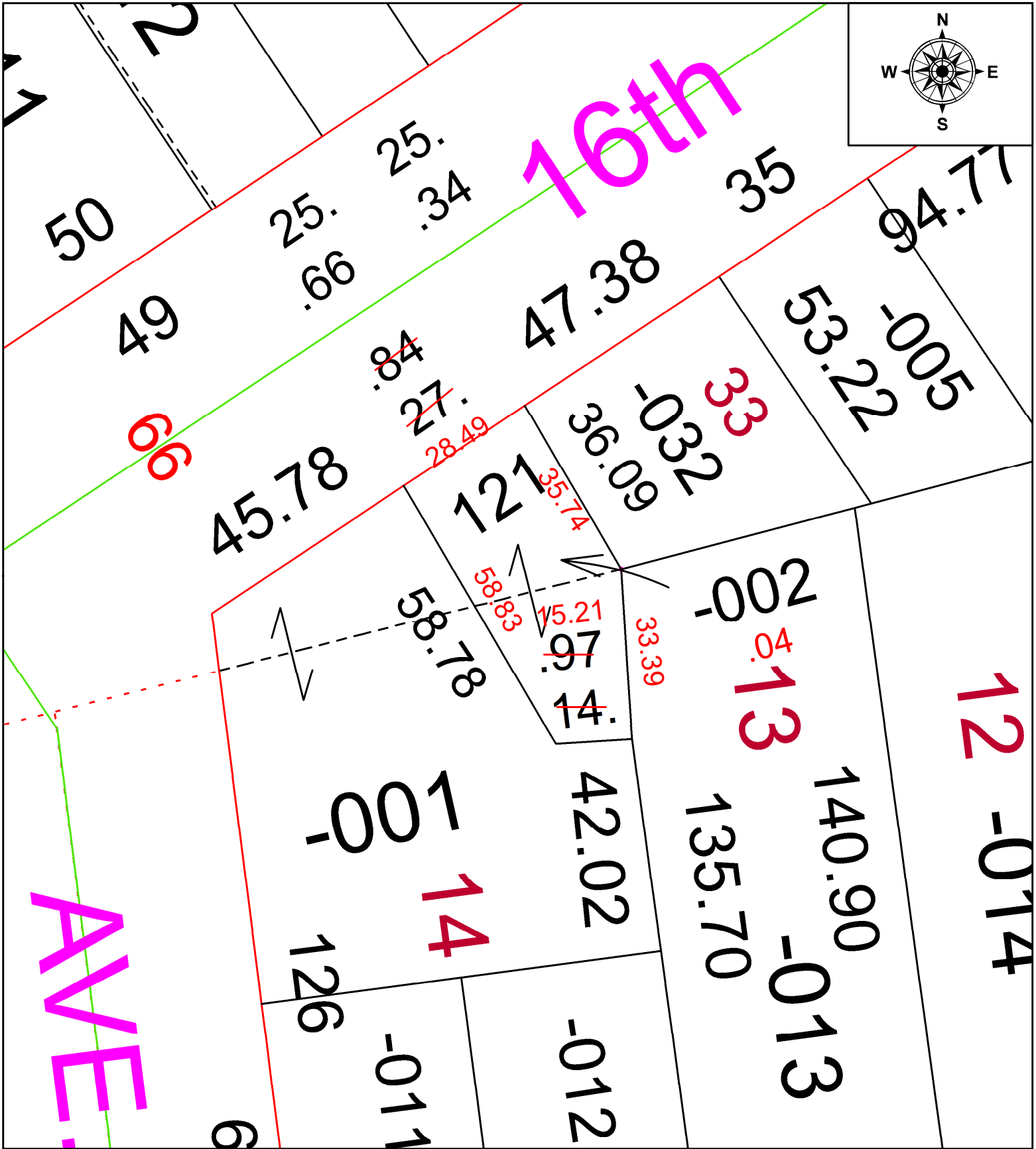


PARENT PARCEL: 02-01-003-141-002

CHILD PARCEL: **FRONT & DEPTH TO AC CORR PER SURV BY THOMAS A. SIMON**

23-05053-C

STARTING POINT: E LINE OF REID AVE AND S LINE OF W 16 ST



**SPLITS/DEEDS PROCESSED**  
 LORAIN COUNTY TAX MAP DEPARTMENT  
 226 MIDDLE AVE. ELYRIA, OH

SURVEYED BY: THOMAS A. SIMON SURV # 50844  
 CLOSURE: 1: 20395  
 MAP PAGE(S): 02-01-003  
 APPROVED BY: AC DATE: March 22, 2023  
 SCALE: 1 in = 25 ft PRIOR INSTRUMENT: 2021- 0842819