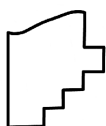
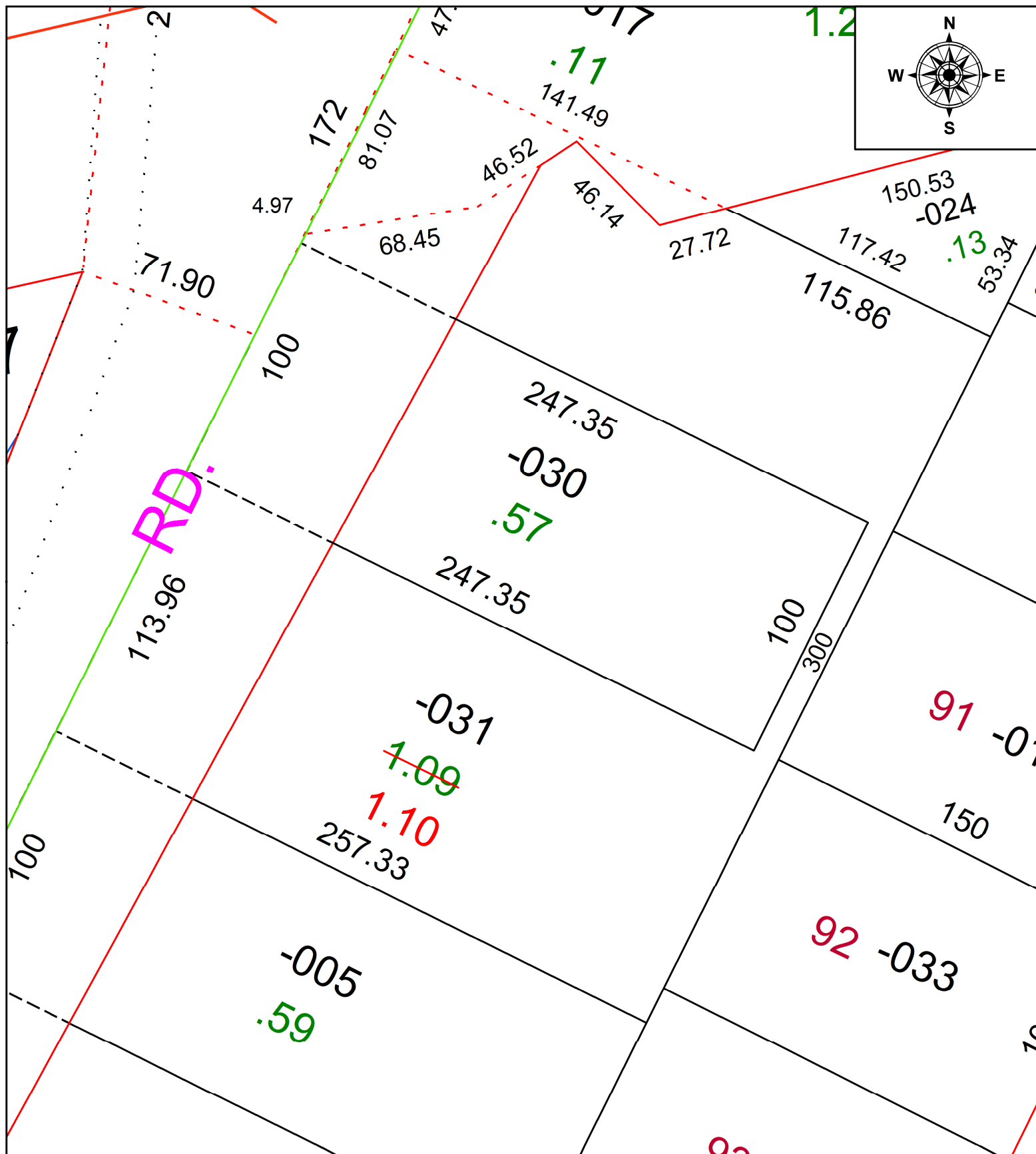


PARENT PARCEL: 05-00-022-102-031

CHILD PARCEL: **AC CORR PER PRIOR DEED INSTRUMENT NO. 2007- 0190094**

23-05052-A

STARTING POINT:



**SPLITS/DEEDS PROCESSED**  
 LORAIN COUNTY TAX MAP DEPARTMENT  
 226 MIDDLE AVE. ELYRIA, OH

SURVEYED BY:	N/A	SURV #	N/A
CLOSURE:	N/A		
MAP PAGE(S):	05-00-022		
APPROVED BY:	AC	DATE:	March 21, 2023
SCALE:	1 in = 50 ft	PRIOR INSTRUMENT:	2007- 0190094