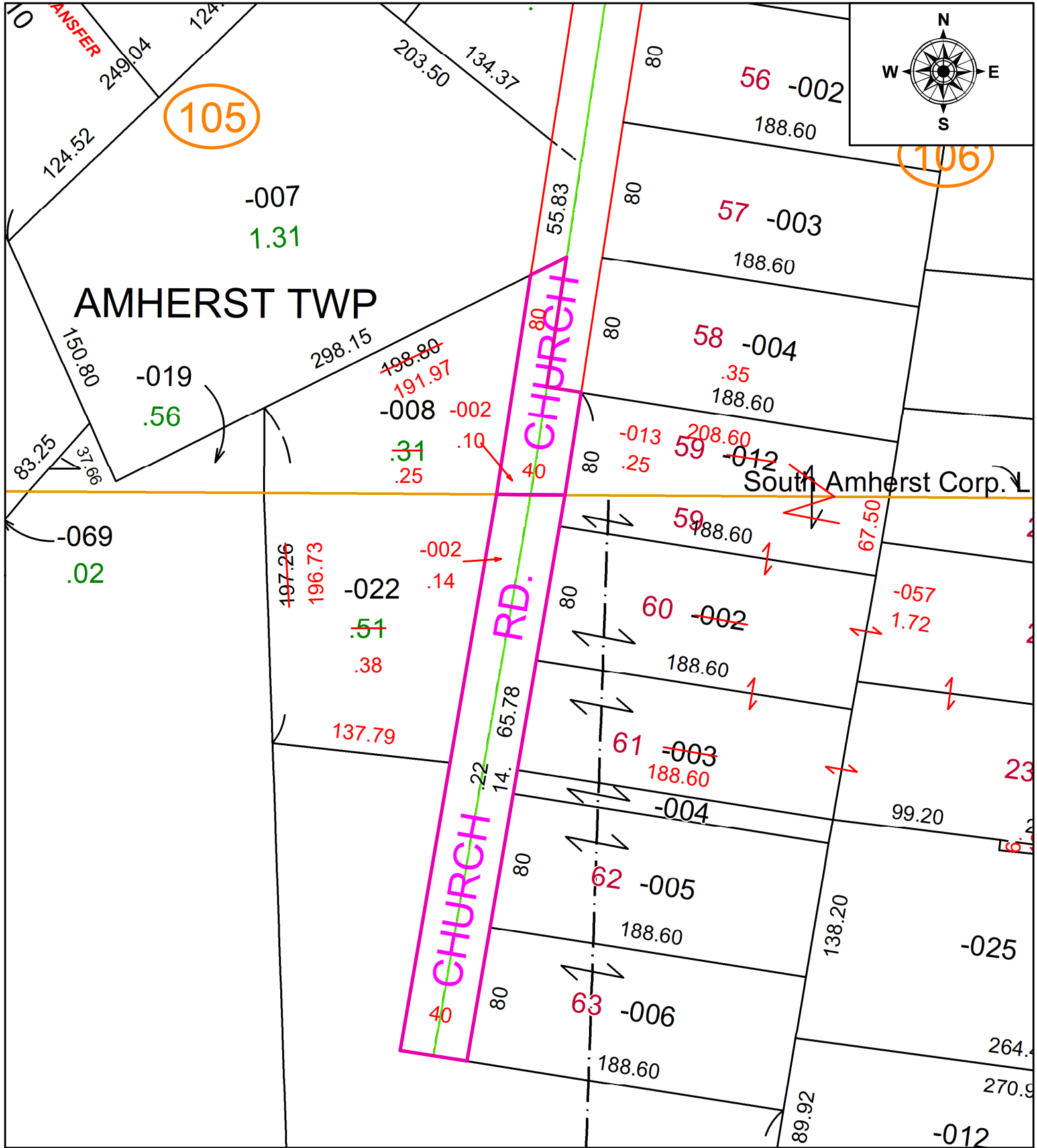


PARENT PARCEL: **ADD TO DUPLICATE PER GEO. LUDWIG'S SUBDIVISION NO. 3**

CHILD PARCEL: 05-00-091-900-002, 09-00-001-900-002

23-05050-D

STARTING POINT:



SPLITS/DEEDS PROCESSED
 LORAIN COUNTY TAX MAP DEPARTMENT
 226 MIDDLE AVE. ELYRIA, OH

SURVEYED BY:	N/A	SURV #	N/A
CLOSURE:	N/A		
MAP PAGE(S):	05-00-091-B		
APPROVED BY:	AC	DATE:	March 20, 2023
SCALE:	1 in = 75 ft	PRIOR INSTRUMENT:	VOLUME 7, PAGE 3