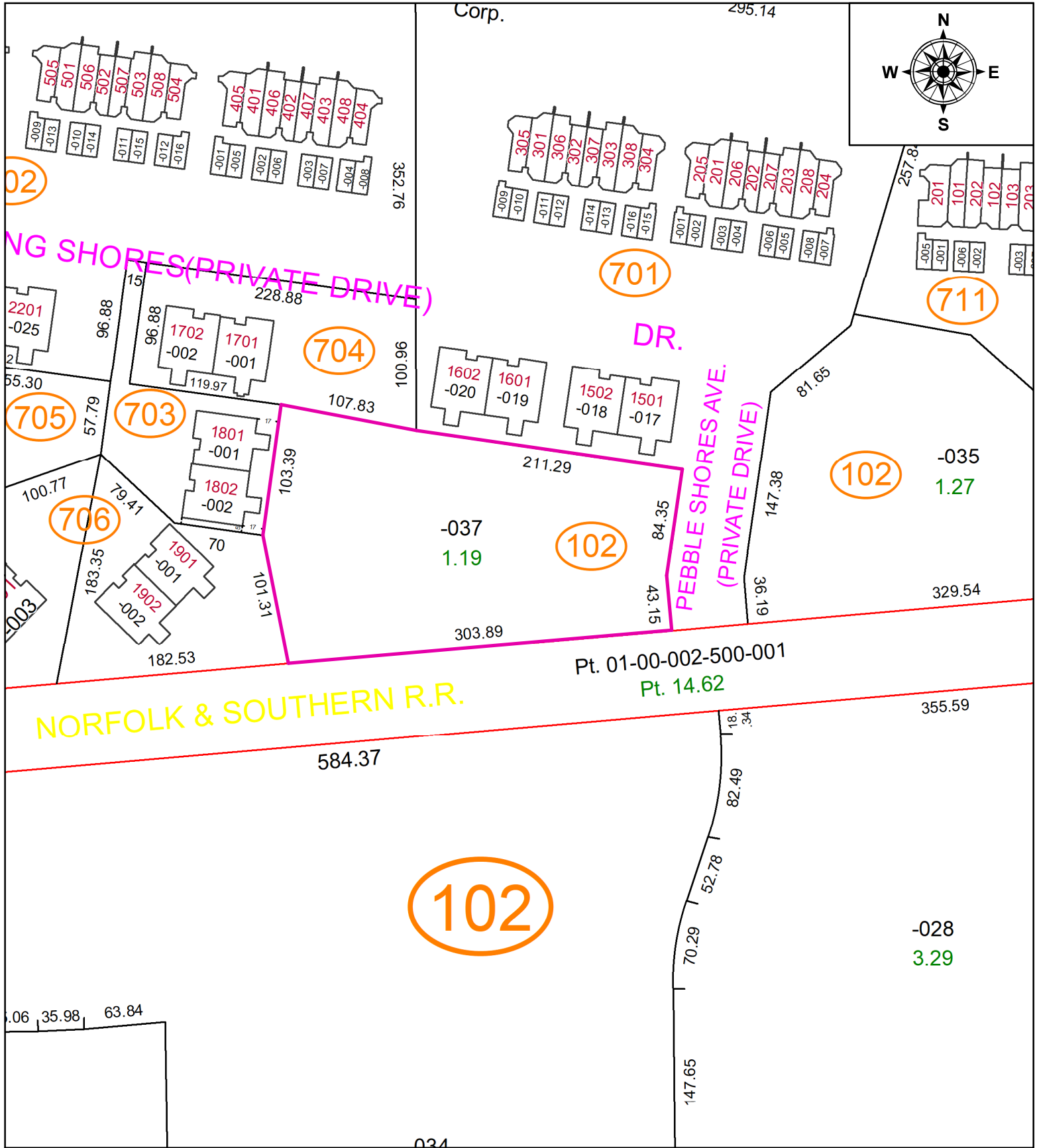


PARENT PARCEL: 01-00-005-102-037

CHILD PARCEL: NEW SURVEY

STARTING POINT: S.E. CORNER OF VERMILION SHORES CONDO. 2 PH. 12

23-05045-C



NORFOLK & SOUTHERN R.R.

PEBBLE SHORES AVE.  
(PRIVATE DRIVE)

102

**SPLITS/DEEDS PROCESSED**  
 LORAIN COUNTY TAX MAP DEPARTMENT  
 226 MIDDLE AVE. ELYRIA, OH

SURVEYED BY: JOSHUA S. RIEDY  
 CLOSURE: 1:153572  
 MAP PAGE(S): 01-00-005  
 APPROVED BY: TJS DATE: 3/9/2023  
 SCALE: 1" = 100' PRIOR INSTRUMENT: 2019-0718437