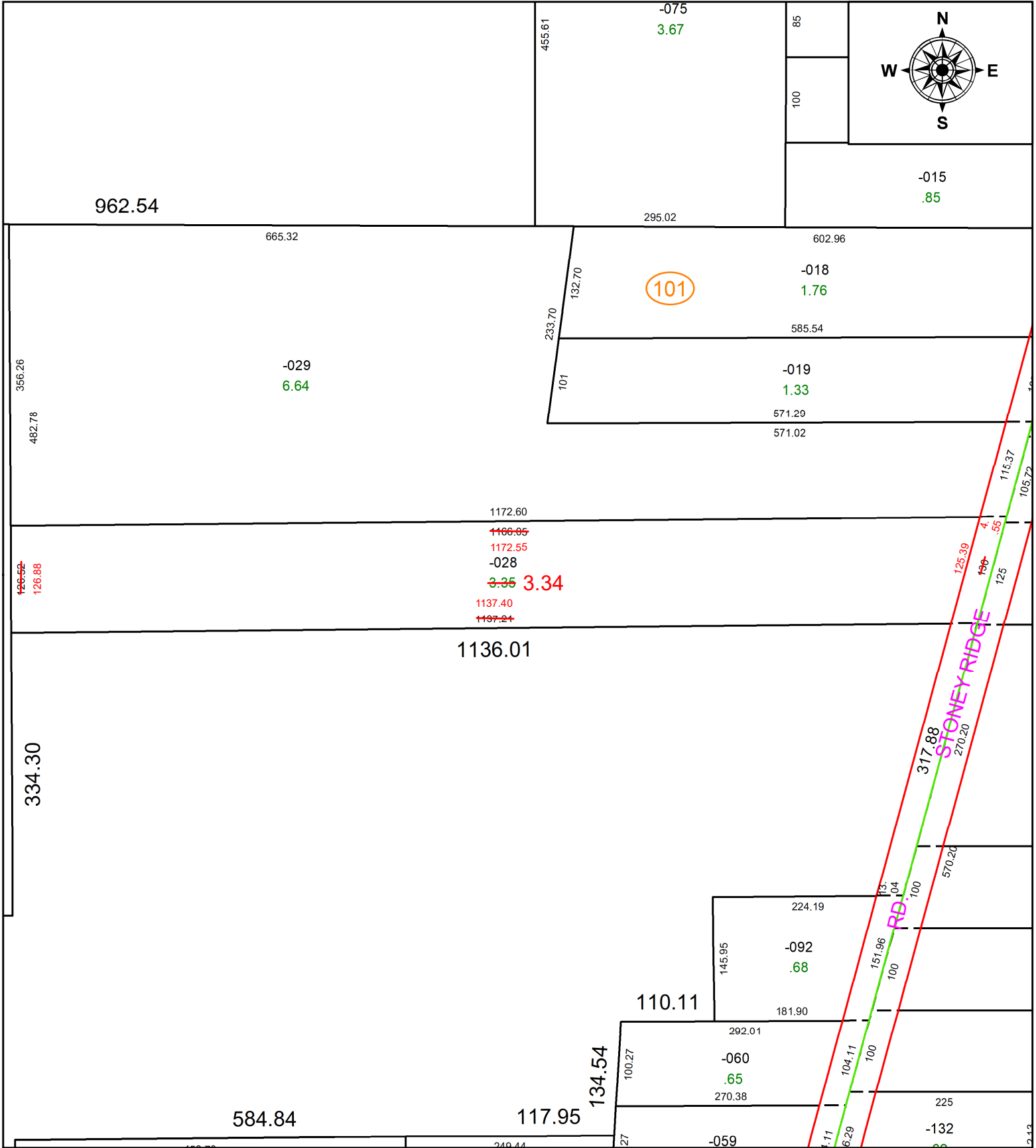


PARENT PARCEL: 04-00-012-101-028

CHILD PARCEL: **AC CORR PER SURV BY MATTHEW A. HILDEBRANDT**

STARTING POINT: C/L OF S PARK DR AND STONEY RIDGE RD

23-05043-A



SPLITS/DEEDS PROCESSED
 LORAIN COUNTY TAX MAP DEPARTMENT
 226 MIDDLE AVE. ELYRIA, OH

SURVEYED BY: MATTHEW A. HILDEBRANDT **SURV # 50831**
CLOSURE: 1: 274834
MAP PAGE(S): 04-00-012-B
APPROVED BY: AC **DATE:** March 07, 2023
SCALE: 1 in = 150 ft **PRIOR INSTRUMENT:** 2022- 0882294