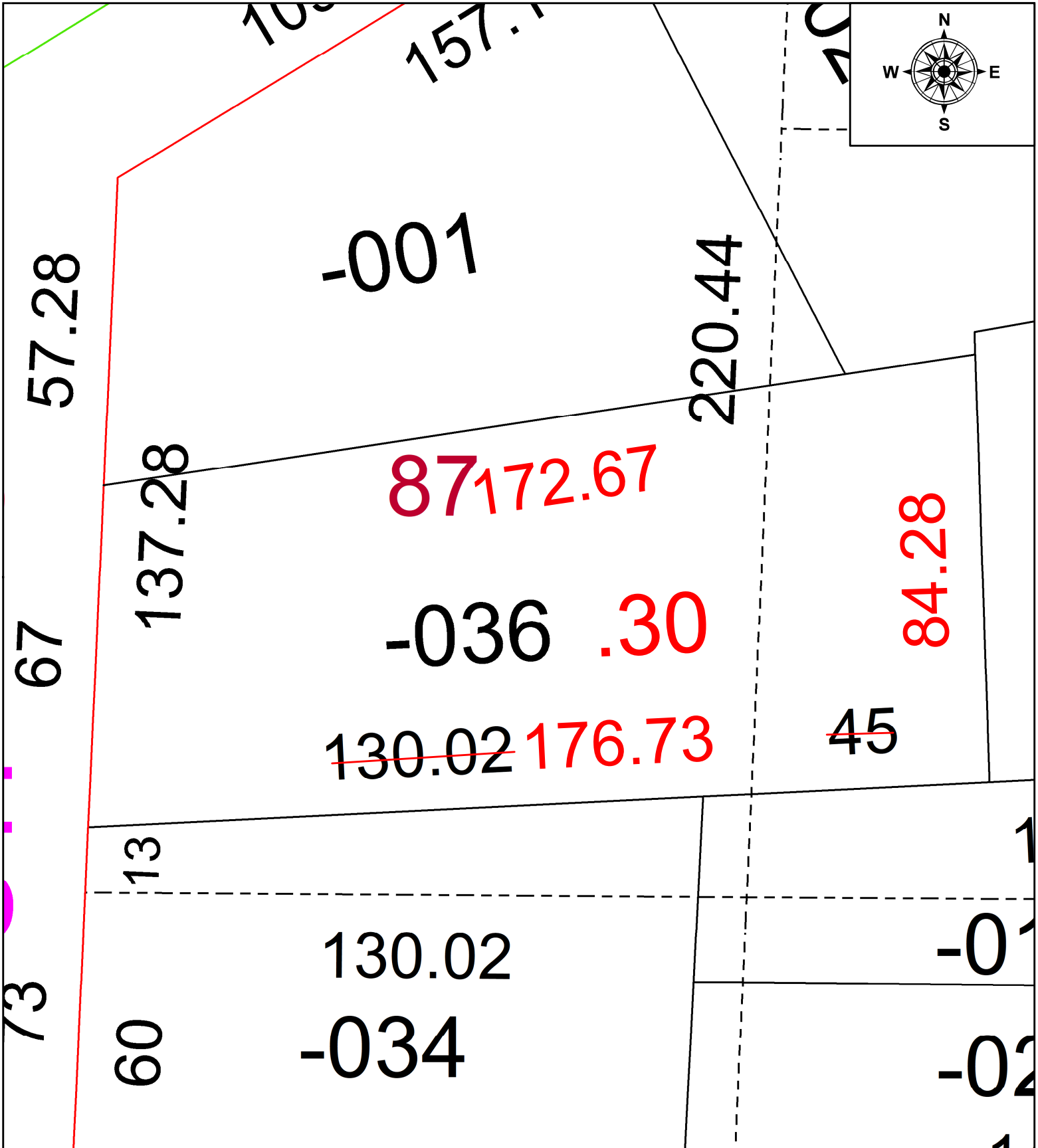


PARENT PARCEL: 05-00-023-118-036

CHILD PARCEL: **FRONT AND DEPTH TO AC CORR PER SURV BY ROBERT M. RUFFING**

23-05029-C

STARTING POINT: E LINE OF SPRING ST AND SW CORNER OF S/L 87



SPLITS/DEEDS PROCESSED
 LORAIN COUNTY TAX MAP DEPARTMENT
 226 MIDDLE AVE. ELYRIA, OH

SURVEYED BY: ROBERT M. RUFFING SURV # 50803
 CLOSURE: 1: 163211
 MAP PAGE(S): 05-00-023-B
 APPROVED BY: AC DATE: February 08, 2023
 SCALE: 1 in = 25 ft PRIOR INSTRUMENT: 1996- 0441497