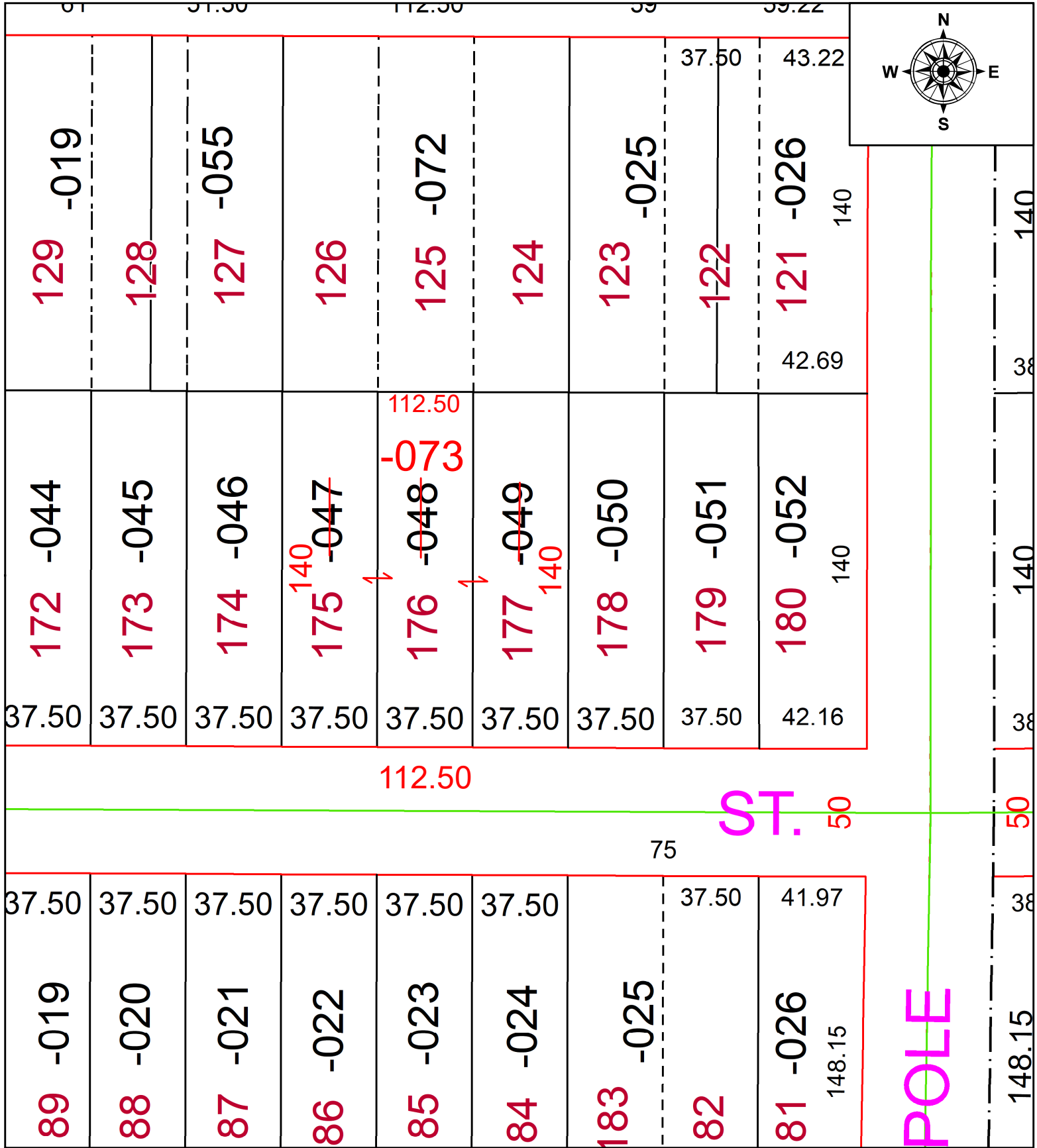


PARENT PARCEL: 02-02-024-117-047, -048, -049

CHILD PARCEL: 02-02-024-117-073

STARTING POINT: FRONTAGE CORR PER SURV BY ROBERT M. RUFFING

23-05021-C



SPLITS/DEEDS PROCESSED
LORAIN COUNTY TAX MAP DEPARTMENT
226 MIDDLE AVE. ELYRIA, OH

SURVEYED BY: ROBERT M. RUFFING	SURV # 50790
CLOSURE: 1: 2147483648	
MAP PAGE(S): 02-02-024-B	
APPROVED BY: AC	DATE: January 24, 2023
SCALE: 1 in = 50 ft	PRIOR INSTRUMENT: 2021- 0855032