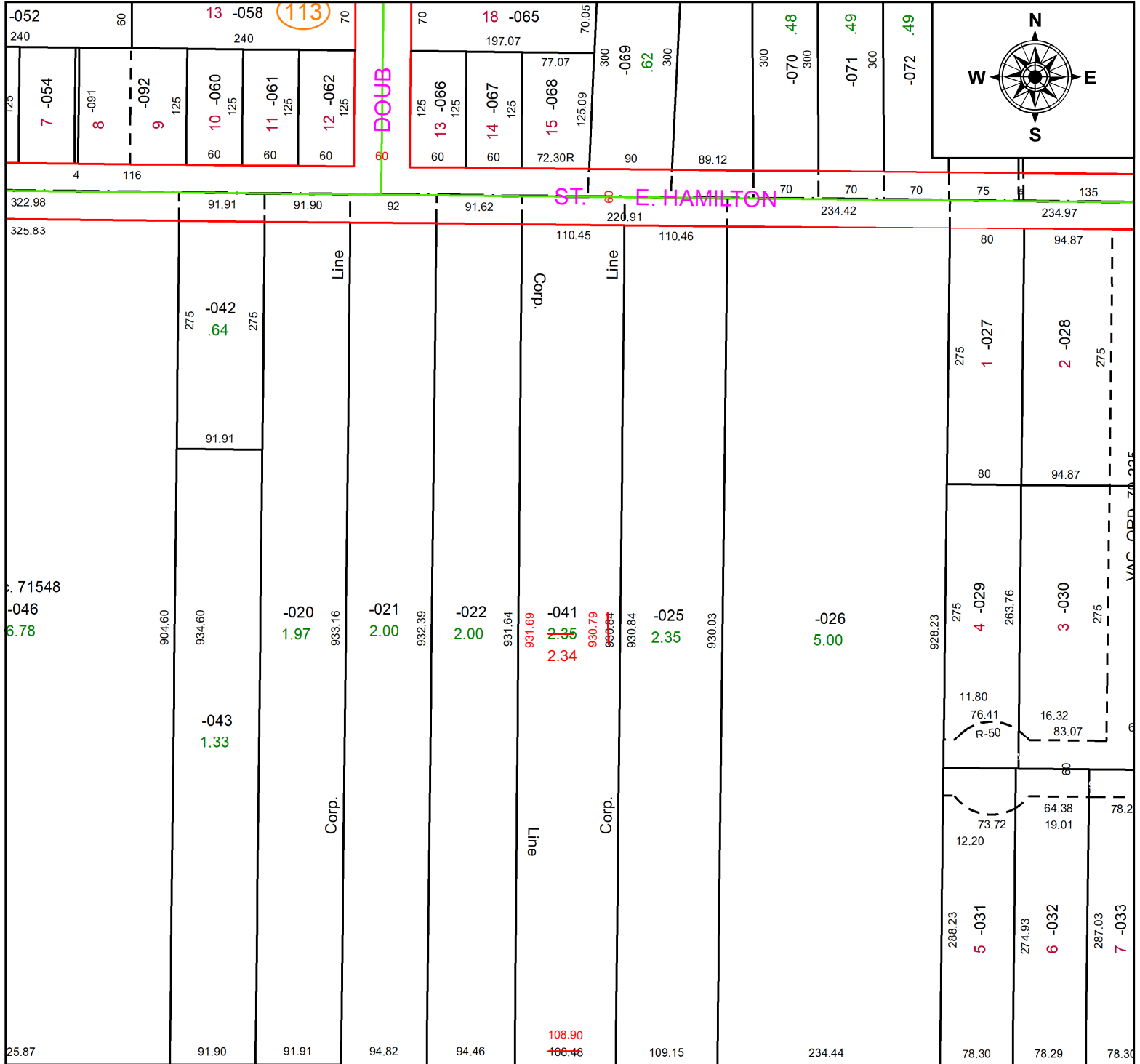


PARENT PARCEL: 09-00-106-000-041

CHILD PARCEL: **AC CORR PER SURV BY ROBERT M. RUFFING**

23-05019-A

STARTING POINT: NE CORNER OF S/L 2 AND S LINE OF E HAMILTON ST



2240.05					234.89		
---------	--	--	--	--	--------	--	--

**SPLITS/DEEDS PROCESSED**  
 LORAIN COUNTY TAX MAP DEPARTMENT  
 226 MIDDLE AVE. ELYRIA, OH

**SURVEYED BY:** ROBERT M. RUFFING **SURV # 50784**  
**CLOSURE:** 1: 38597  
**MAP PAGE(S):** 09-00-106-B  
**APPROVED BY:** AC **DATE:** January 18, 2023  
**SCALE:** 1 in = 150 ft **PRIOR INSTRUMENT:** 2022- 0871101