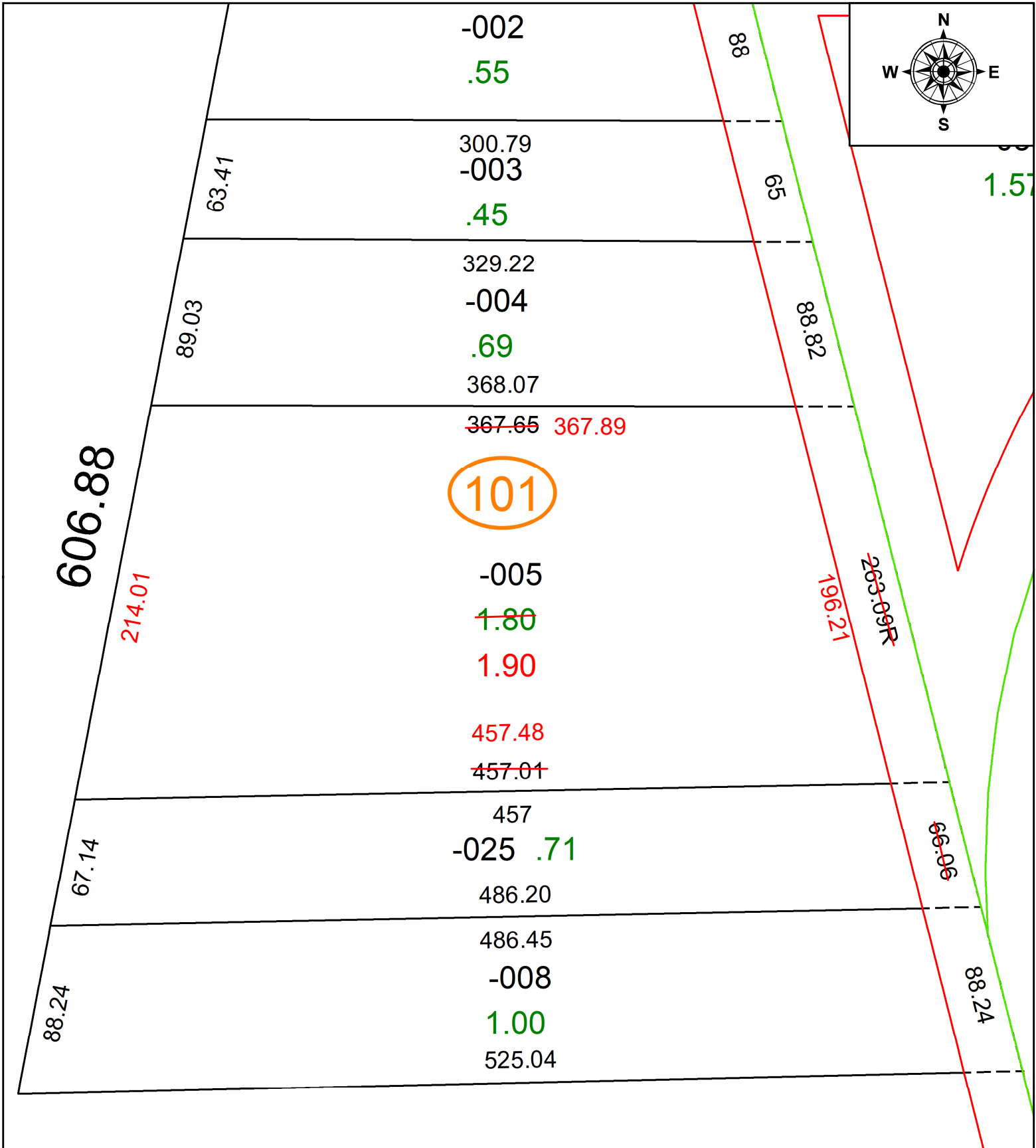


PARENT PARCEL: 03-00-067-000-005

CHILD PARCEL: **AC CORR PER SURV BY PATRICK A. MCGANNON**

STARTING POINT: C/L OF EAST RIVER RD AND N LINE OF O/L 67

23-05009-A



SPLITS/DEEDS PROCESSED
LORAIN COUNTY TAX MAP DEPARTMENT
226 MIDDLE AVE. ELYRIA, OH

SURVEYED BY: PATRICK A. MCGANNON	SURV # 50771
CLOSURE: 1: 1137307	
MAP PAGE(S): 03-00-067	
APPROVED BY: AC	DATE: January 05, 2023
SCALE: 1 in = 67 ft	PRIOR INSTRUMENT: 2022- 0868180