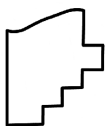
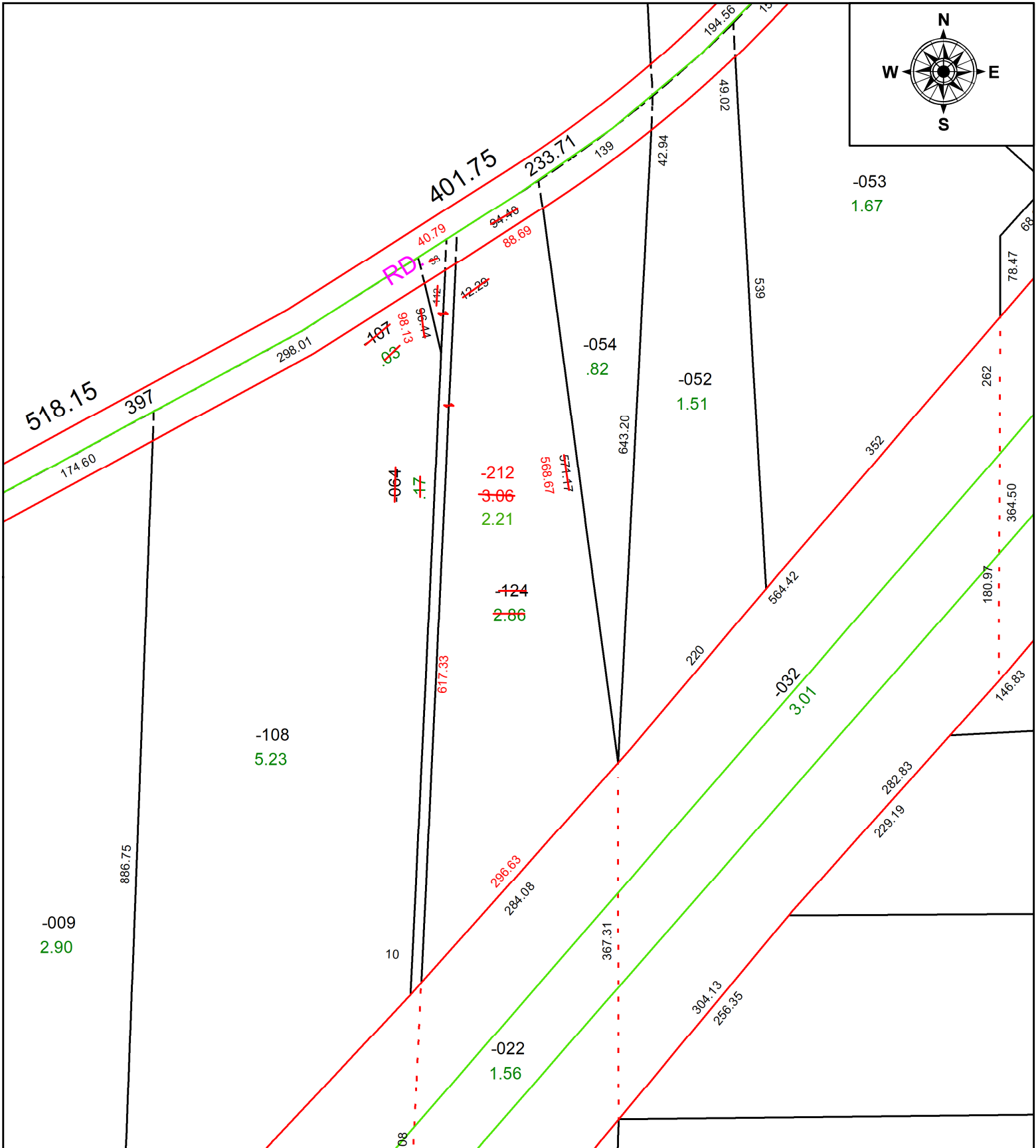


PARENT PARCEL: 05-00-099-000-064, -107, -124

CHILD PARCEL: 05-00-099-000-212

STARTING POINT: AC CORR PER SURV BY GEORGE A. HOFMANN

22-05005-A



SPLITS/DEEDS PROCESSED
LORAIN COUNTY TAX MAP DEPARTMENT
226 MIDDLE AVE. ELYRIA, OH

SURVEYED BY: GEORGE A. HOFMANN	SURV # 50769
CLOSURE: 1: 481994	
MAP PAGE(S): 05-00-099	
APPROVED BY: AC	DATE: December 29, 2022
SCALE: 1 in = 125 ft	PRIOR INSTRUMENT: 2022- 0876002