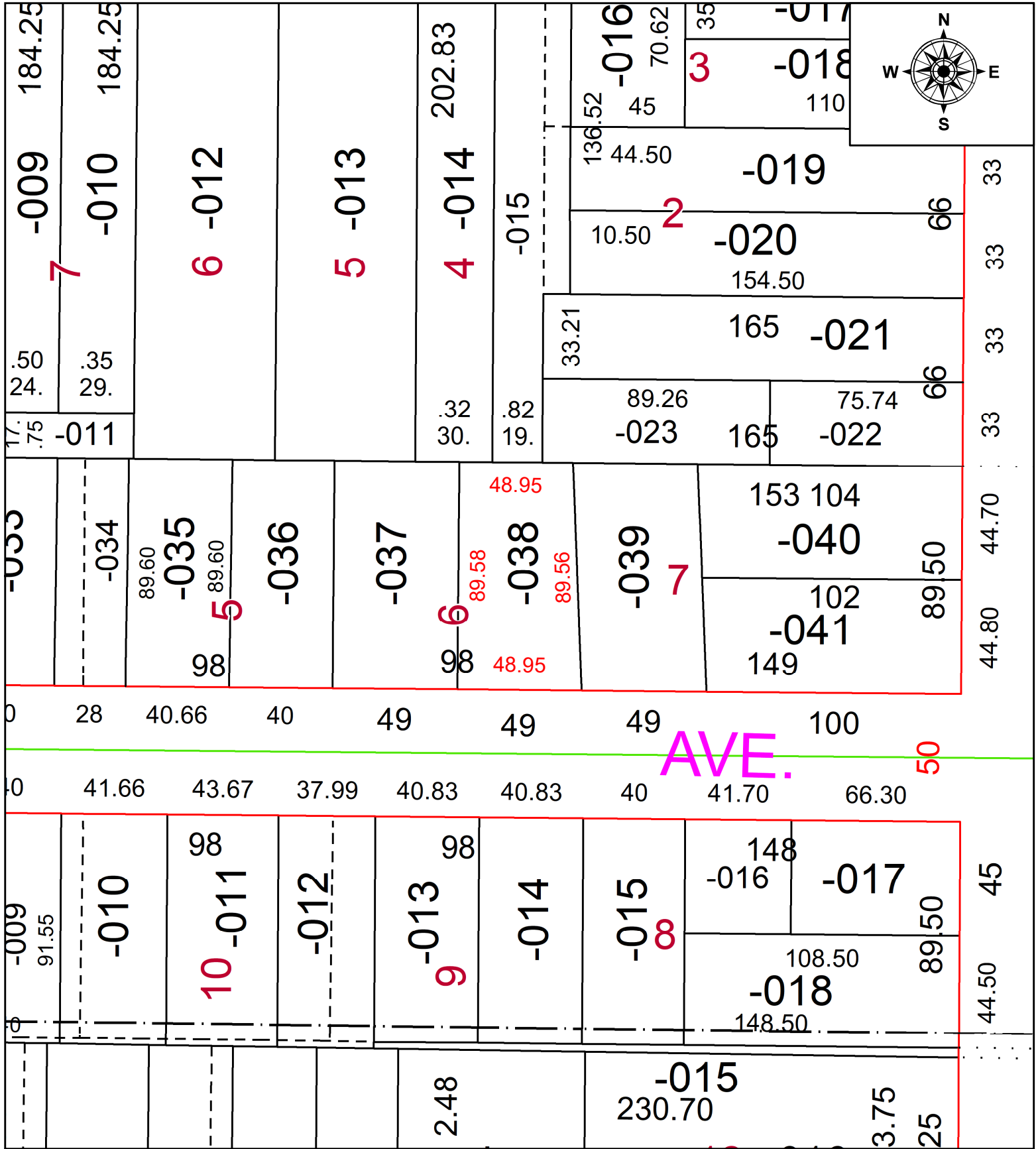


PARENT PARCEL: 06-26-019-101-038

CHILD PARCEL: **MAP CORRECTION ONLY**

22-05004-C

STARTING POINT: W LINE OF EAS AVE AND S LINE OF 9TH ST



SPLITS/DEEDS PROCESSED
 LORAIN COUNTY TAX MAP DEPARTMENT
 226 MIDDLE AVE. ELYRIA, OH

SURVEYED BY: STEPHEN P. CAMPBELL **SURV # 50767**
CLOSURE: 1: 185669
MAP PAGE(S): 06-138
APPROVED BY: AC **DATE:** December 28, 2022
SCALE: 1 in = 50 ft **PRIOR INSTRUMENT:** 2020- 0783740