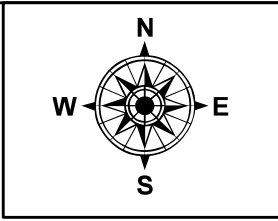
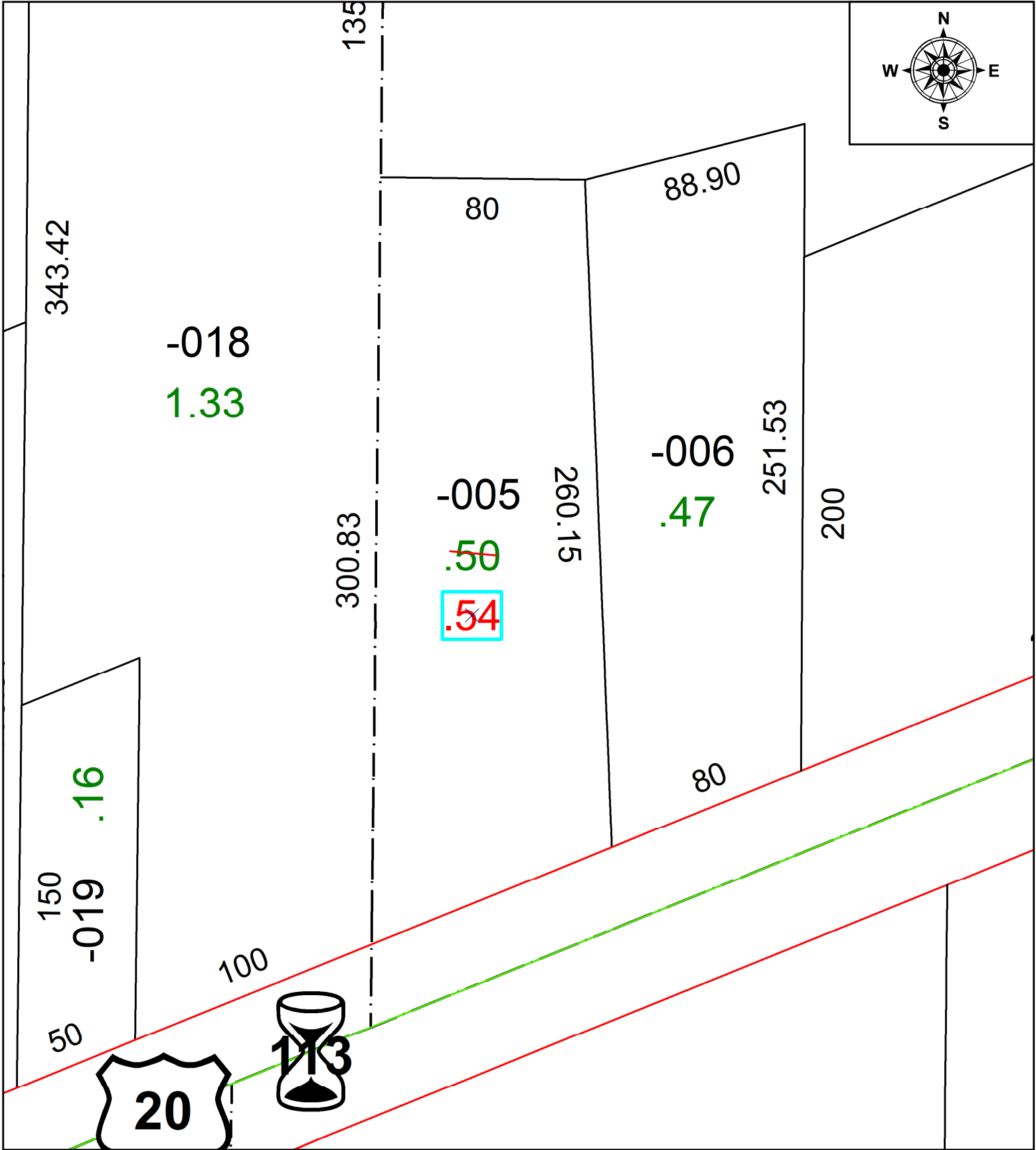


PARENT PARCEL: 06-25-025-000-005

CHILD PARCEL: **AC CORR PER PRIOR DEED INST # 2014- 0510359**

STARTING POINT: N LINE OF CLEVELAND ST AND E LINE OF ELYRIA TOWNSHIP

22-05002-A



SPLITS/DEEDS PROCESSED
 LORAIN COUNTY TAX MAP DEPARTMENT
 226 MIDDLE AVE. ELYRIA, OH

SURVEYED BY: _____ N/A SURV # N/A
 CLOSURE: _____ N/A
 MAP PAGE(S): _____ 06-25
 APPROVED BY: _____ AC DATE: December 22, 2022
 SCALE: 1 in = 50 ft PRIOR INSTRUMENT: 2014- 0510359